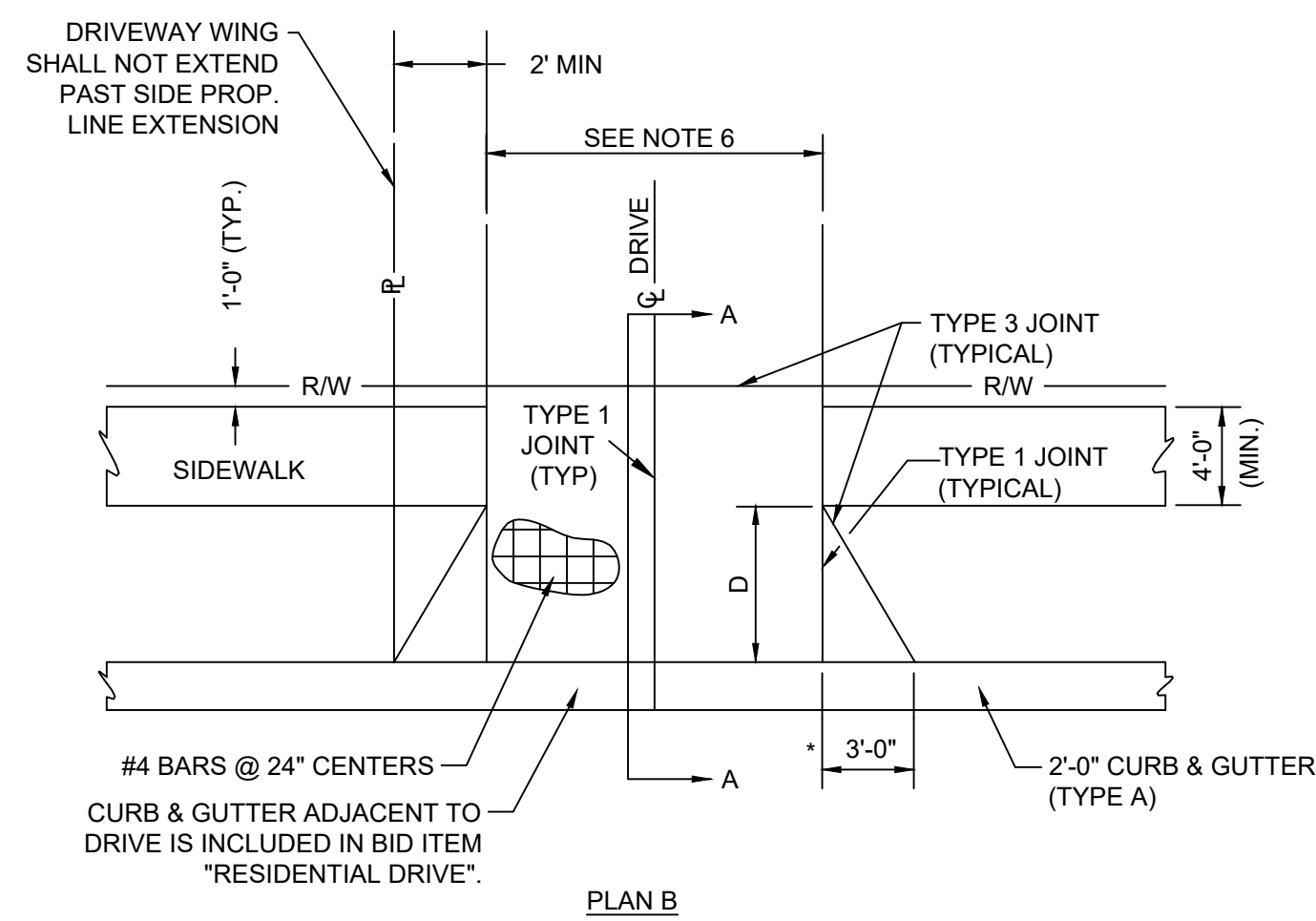
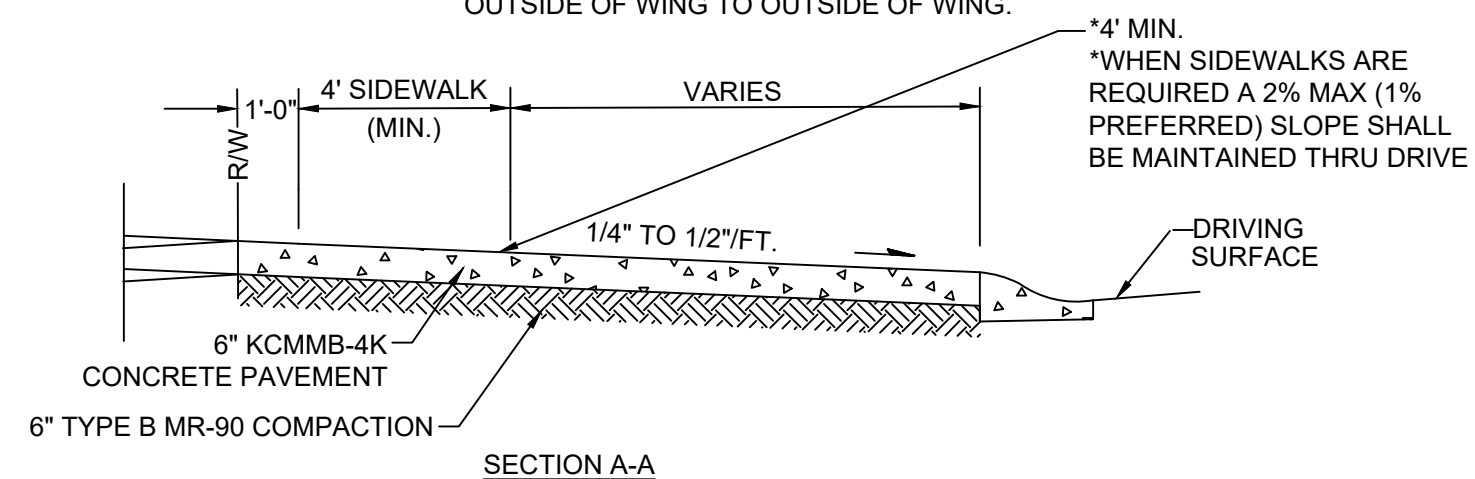


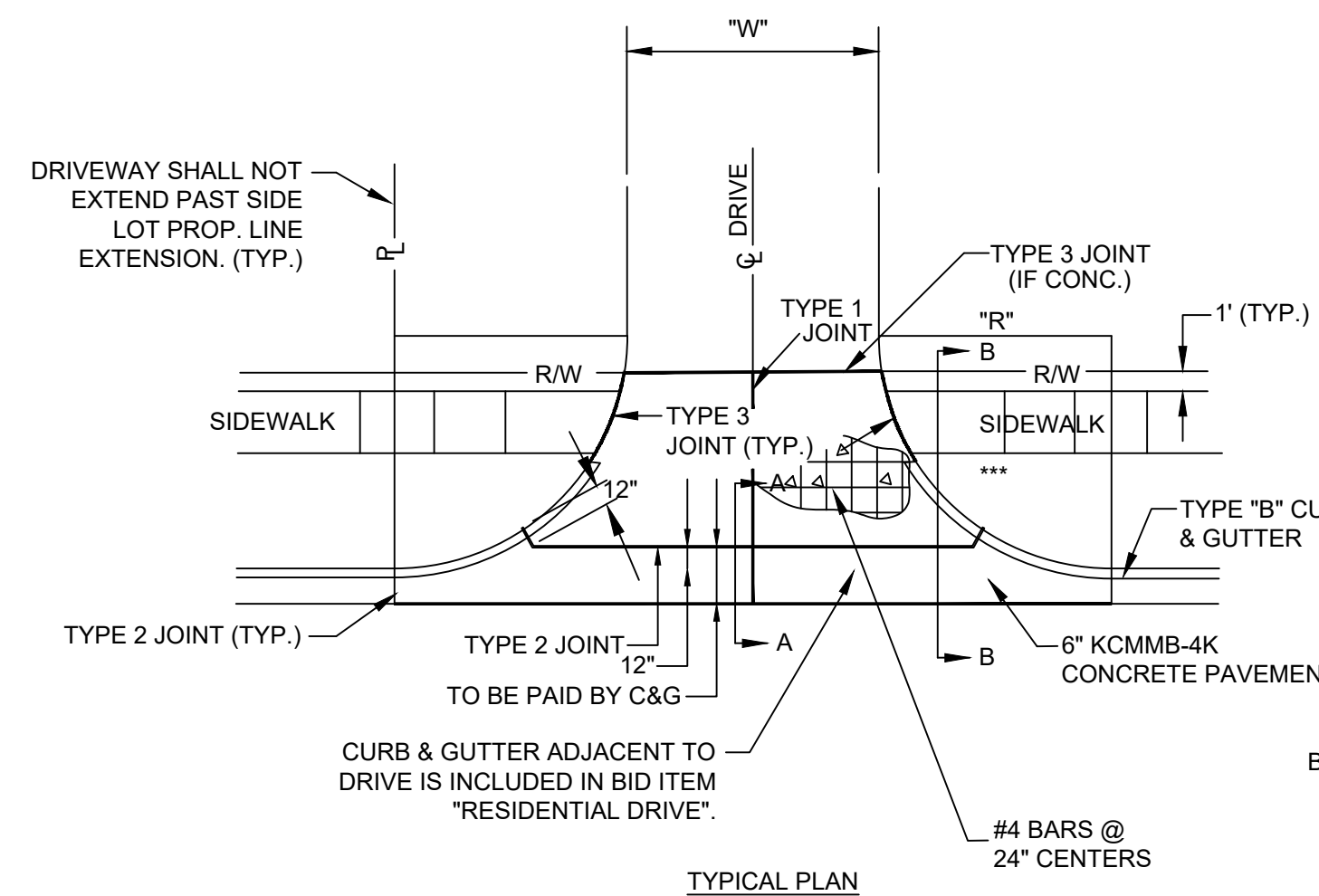
FOR USE WHEN "D" IS LESS THAN 5.0'
(OR WHEN THERE IS NO SIDEWALK)



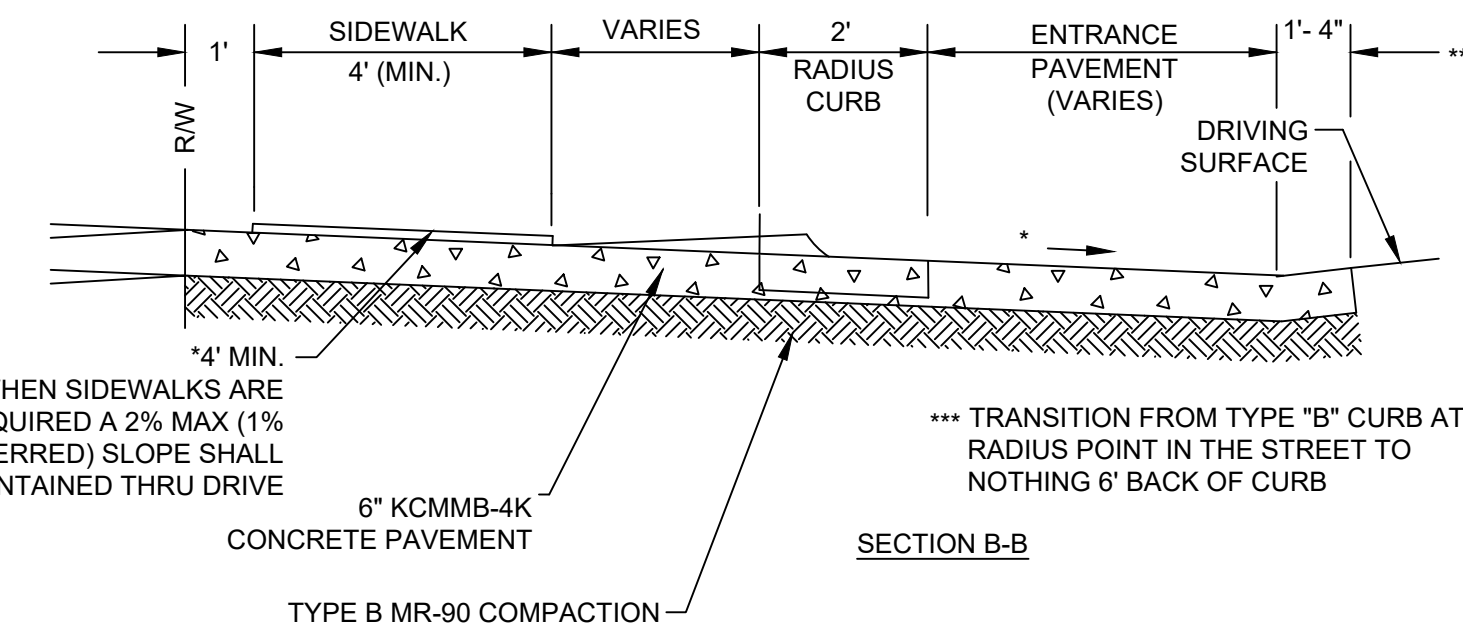
* FOR DRIVE WIDTHS 10'-12', ADJUST WINGS TO OBTAIN
A MINIMUM OF 18' AT THE CURB, MEASURED FROM
OUTSIDE OF WING TO OUTSIDE OF WING.



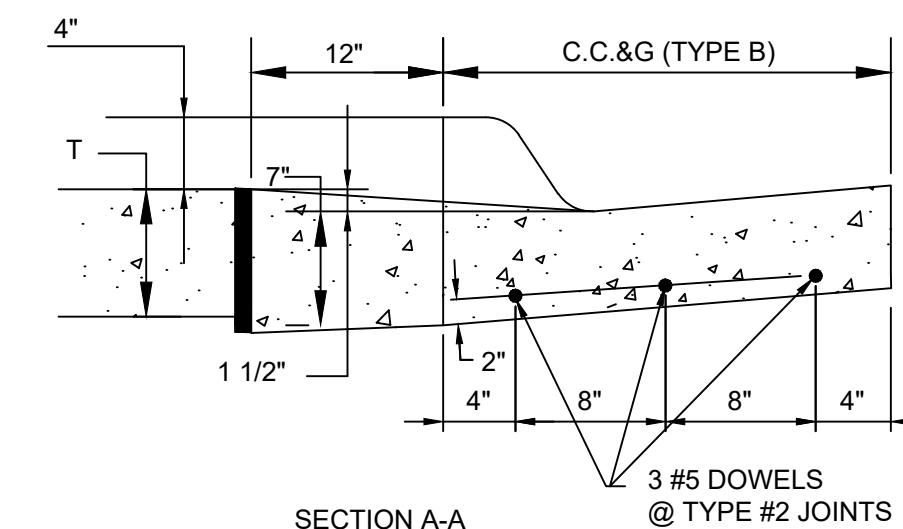
SECTION A-A



TYPICAL PLAN



SECTION B-B

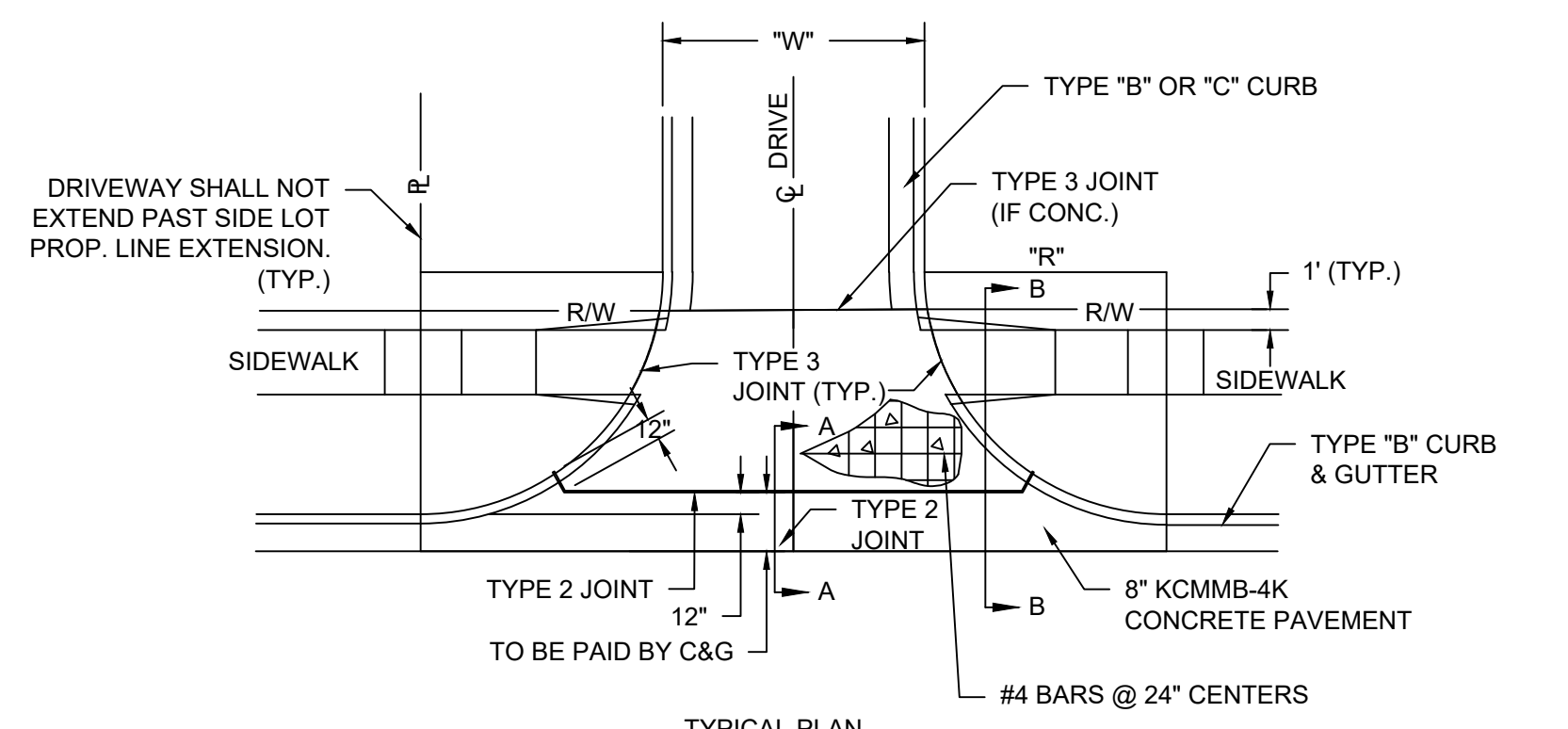


SECTION A-A

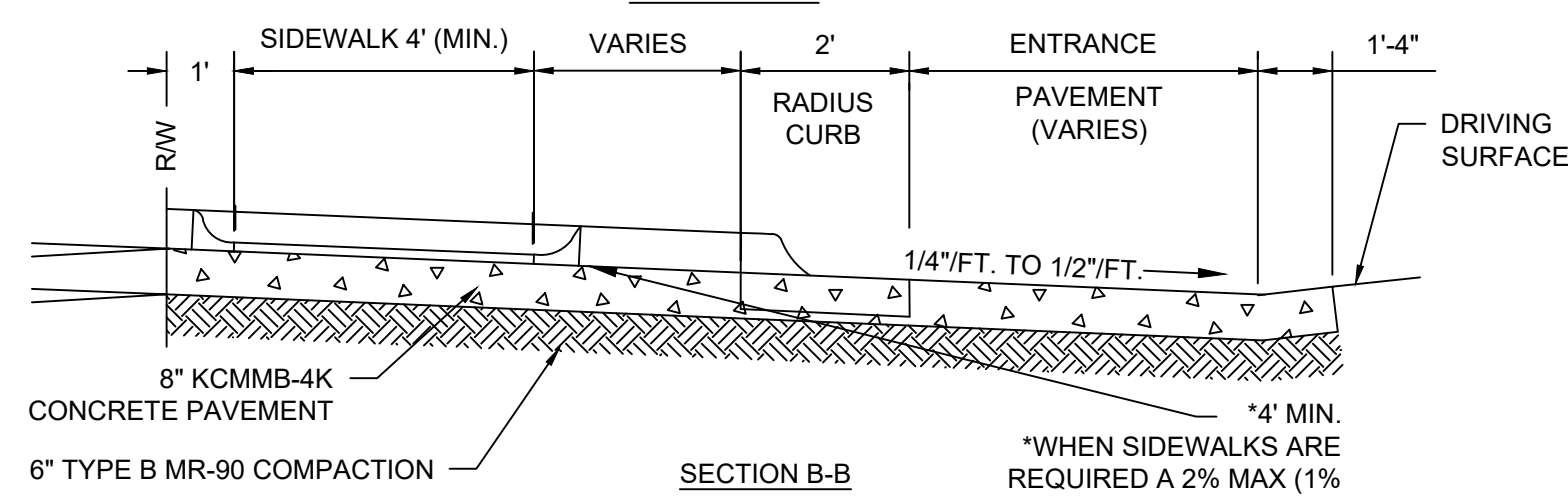
T=8" NON-REINFORCED FOR COMMERCIAL
DRIVE, ALLEY APPROACH, AND SIDEWALK IN
DRIVE ENTRANCE.

* 2% MIN./MAX. IF ADJACENT TO A
SIDEWALK.

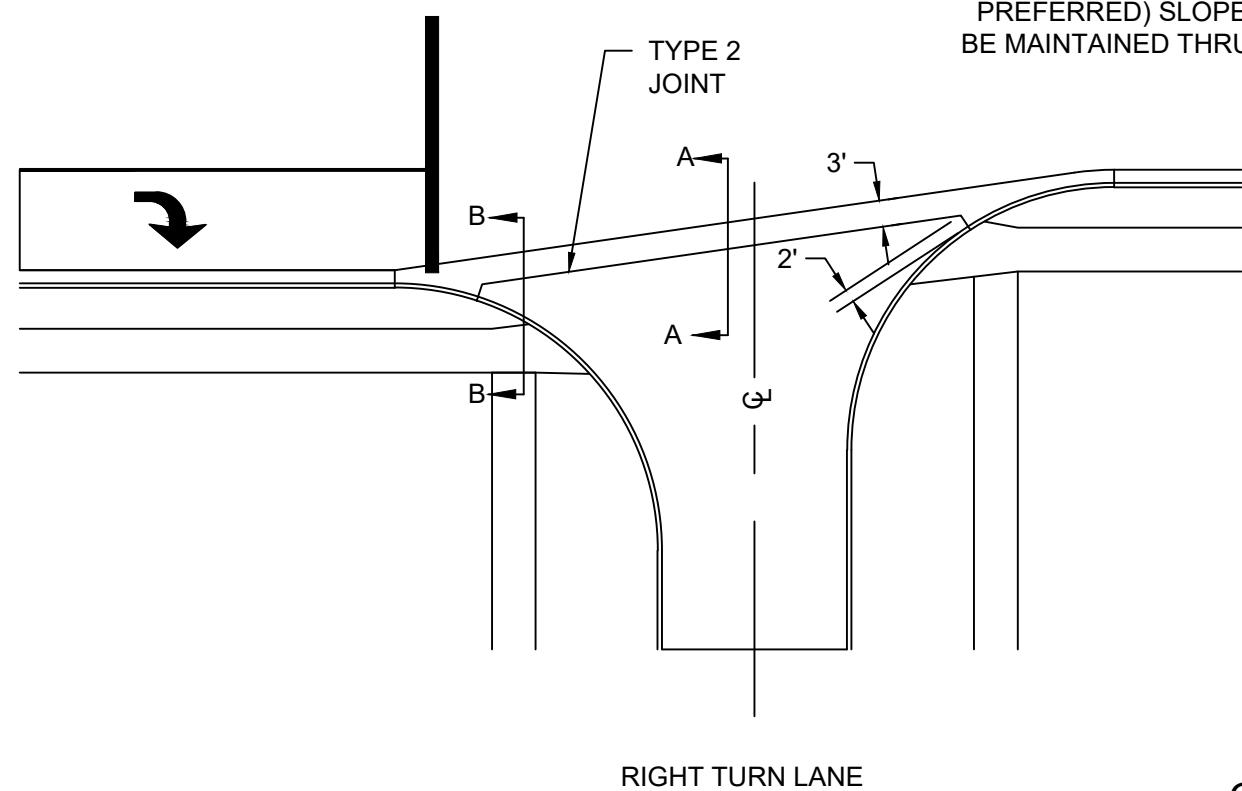
RESIDENTIAL DRIVE



TYPICAL PLAN

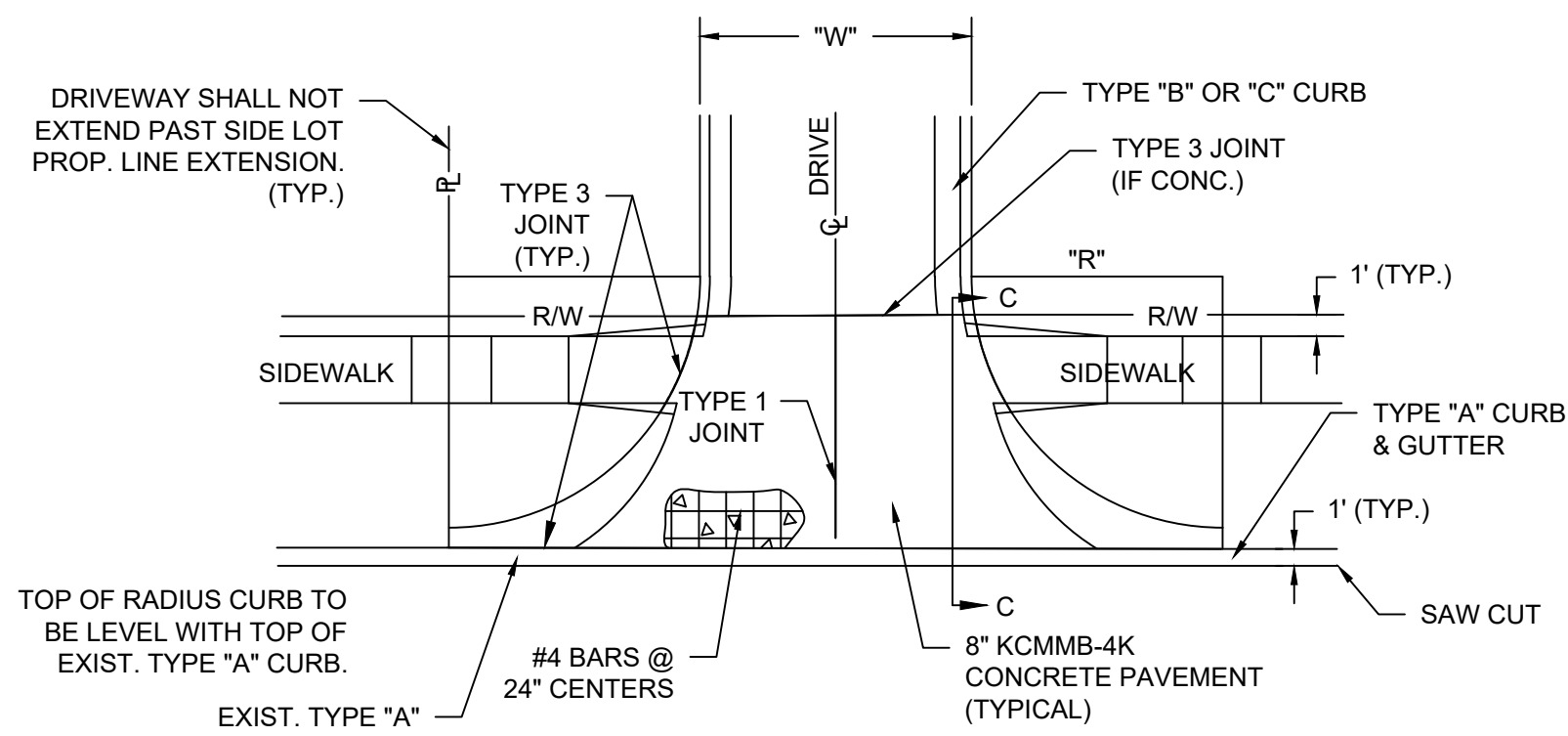


SECTION B-B

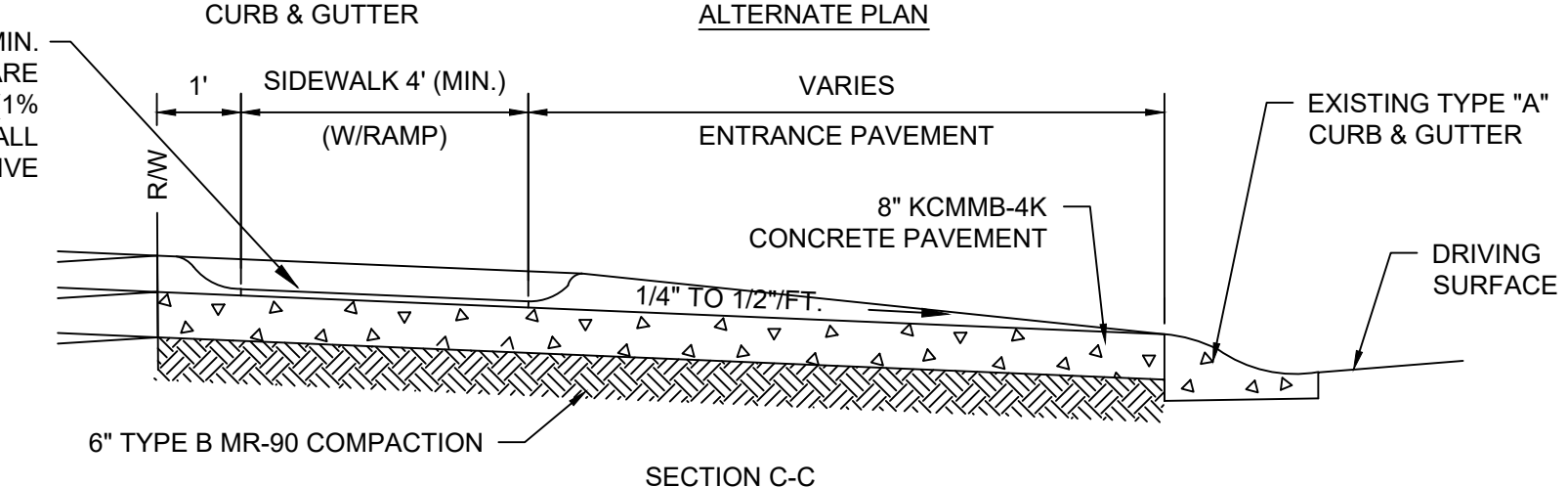


RIGHT TURN LANE

- NOTES:
- SEE CURB & GUTTER DETAIL SHEET FOR JOINTING DETAILS.
 - ALL CONCRETE SHALL BE KCMMB-4K.
 - IF A LEVELING COURSE IS NEEDED, PUGGED AB-3 SHALL BE USED. PUGGED AB-3 MUST BE MOIST (MIN. 5% MOISTURE) AND COMPACTED. DEPTH OF LEVELING COURSE SHALL NOT EXCEED 6". CLEAN ROCK OR GRAVEL WILL NOT BE ALLOWED.
 - WINGS MUST BE 3' WIDE AND INSTALLED ON BOTH SIDES OF DRIVEWAY.
 - DRIVEWAY MUST BE 2' OR GREATER FROM THE SIDE PROPERTY LINE AT ALL POINTS BEYOND THE RIGHT-OF-WAY.
 - MINIMUM WIDTH 10', MAXIMUM WIDTH 32' OR 35% OF PROPERTY FRONT FOOTAGE WHICHEVER IS LESS, EXCEPT AS FOLLOWS:
 - SINGLE FAMILY LOTS: ALLOWED AN 18' WIDTH REGARDLESS OF FRONTAGE.
 - DUPLEX: ALLOWED A 18' WIDTH FOR EACH UNIT REGARDLESS OF FRONTAGE.
 - MULTIPLE DRIVEWAYS MUST BE SEPARATED BY A LANDSCAPE STRIP AT LEAST 4' WIDE.
 - SIDEWALK IS LOCATED ONE FOOT FROM THE R/W LINE, THEREFORE THE EXACT POSITION OF THE SIDEWALK IN RELATION TO THE 3' x 6' TRANSITION MAY VARY.
 - TIE AND DOWEL BARS SHALL BE LEVEL WHEN PLACED.



ALTERNATE PLAN



SECTION C-C

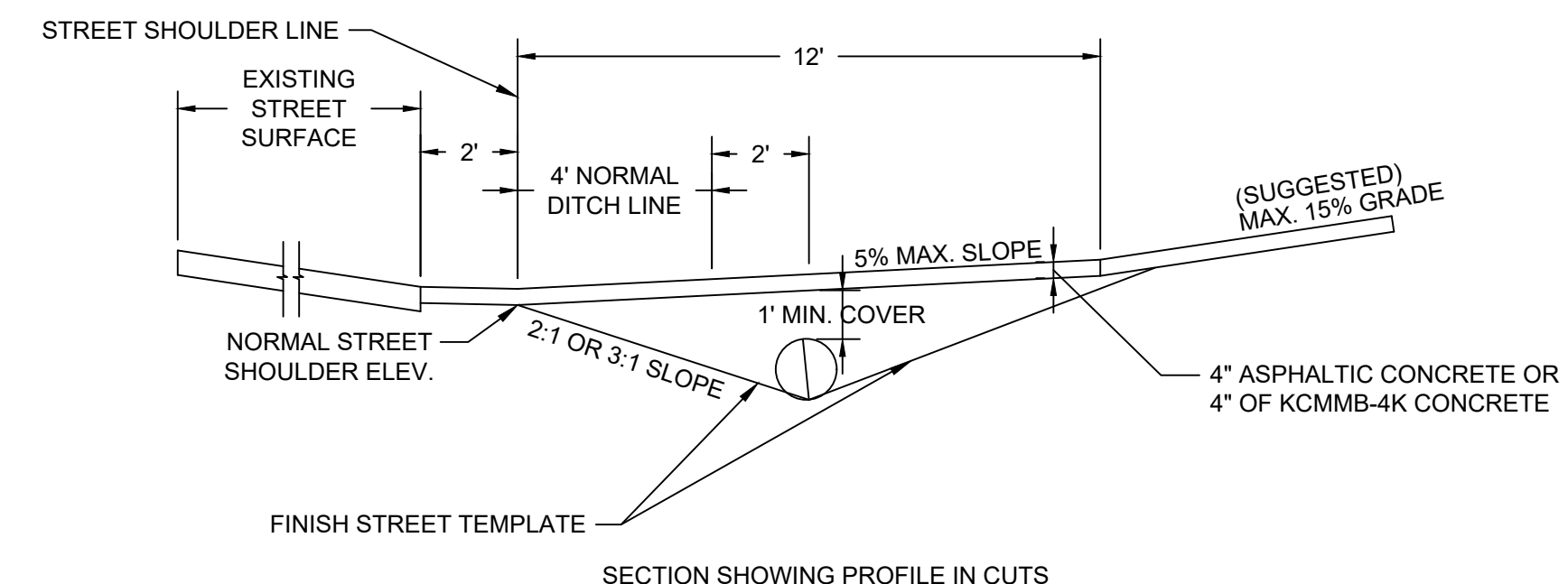
COMMERCIAL & INDUSTRIAL DRIVE

TYPE	"R"		"W"	
	MIN.	MAX.	MIN.	MAX.
RESIDENTIAL	** 5'	15'	10'	* 32'

- * OR 35% OF PROPERTY FRONT FOOTAGE WHICH EVER IS LESS
- ** FOR DRIVE WIDTHS OF 10'-12', ADJUST MIN. RADIUS TO OBTAIN 22' AT THE CURB; MEASURED END OF RADIUS TO END OF RADIUS.

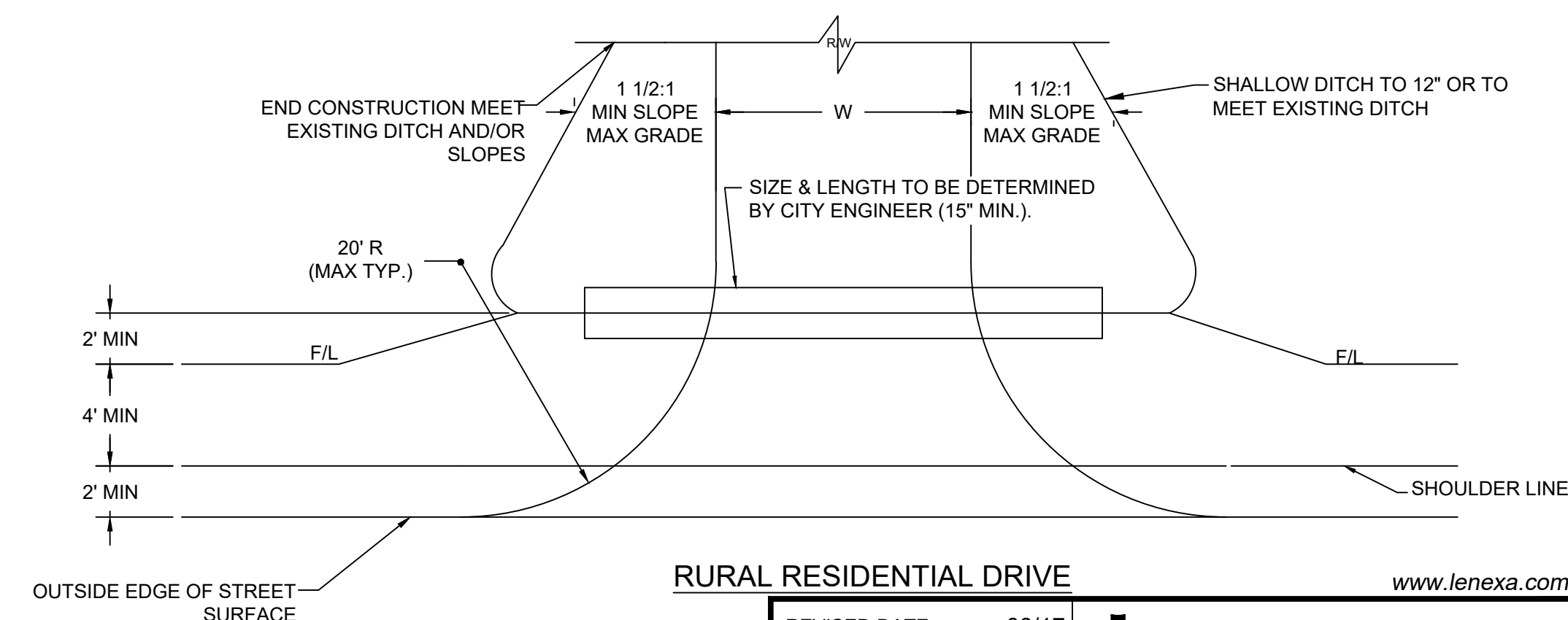
TYPE	"R"		"W"	
	MIN.	MAX.	MIN.	MAX.
COMMERCIAL APARTMENT	*15'	*25'	25'	35'
INDUSTRIAL	**20'	**50'	30'	40'

- * 20' DESIRABLE
** 30' DESIRABLE



SECTION SHOWING PROFILE IN CUTS

- NOTES:
- DRIVEWAY SHALL BE SURFACED WITH EITHER 4" OF ASPHALTIC CONCRETE OR 4" OF KCMMB-4K CONCRETE.
 - ALL FILL MATERIAL SHALL BE COMPACTED TO 90% OF STANDARD MAXIMUM DENSITY. BACKFILL SHALL BE SUITABLE SOIL OR AB-3.
 - PROPERTY OWNER SUPPLIES THE CULVERT, TO CITY SPECIFICATIONS AND CITY FORCES INSTALL CULVERTS. PROPERTY OWNER INSTALL THE DRIVE SURFACE.



RURAL RESIDENTIAL DRIVE

www.lenexa.com 2017

REVISED DATE:	08/17
DETAILED:	BKC
APPROVED:	---



ENTRANCES

SHEET D-200