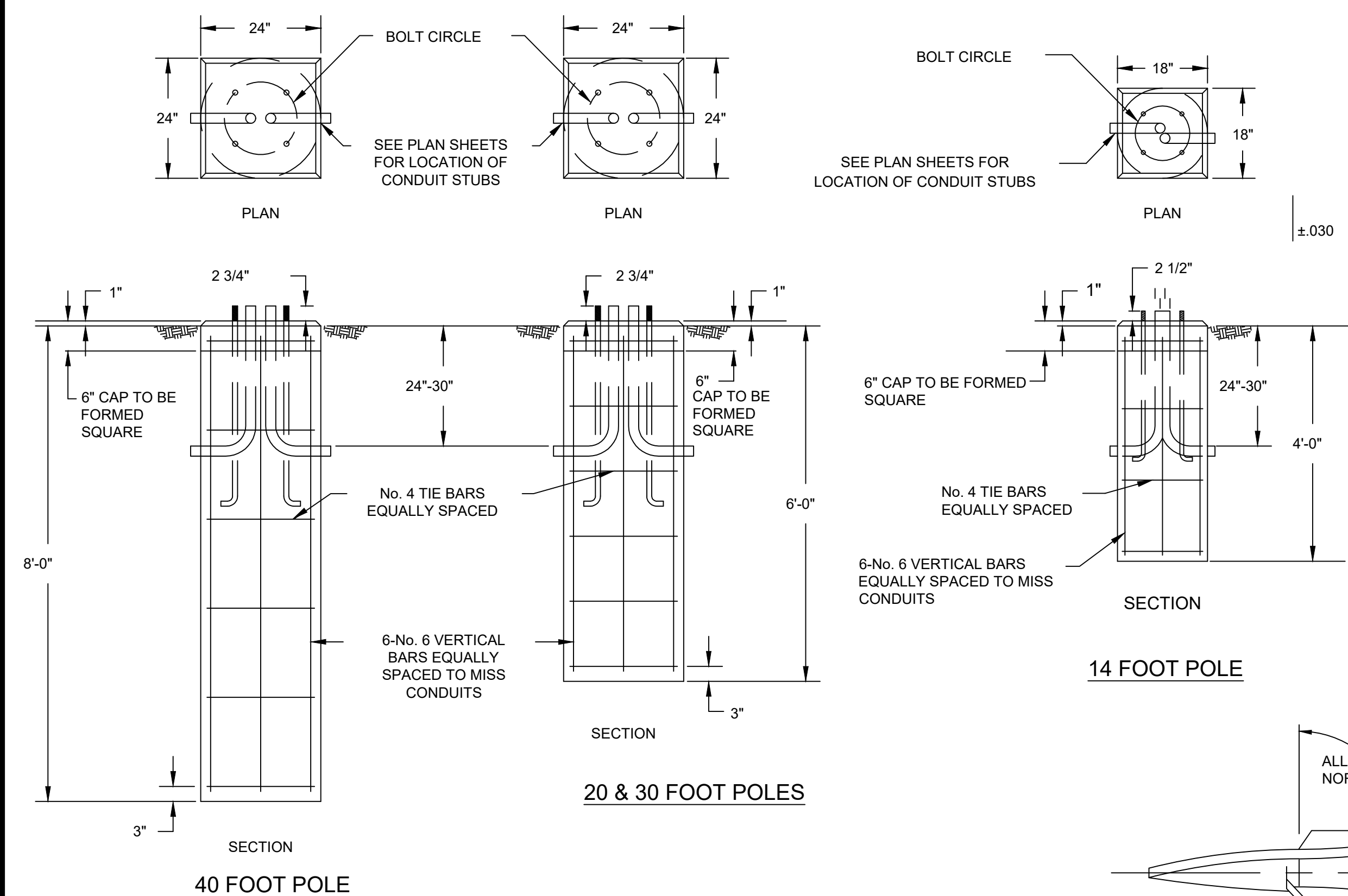


**SUMMARY OF STREET LIGHTING QUANTITIES**

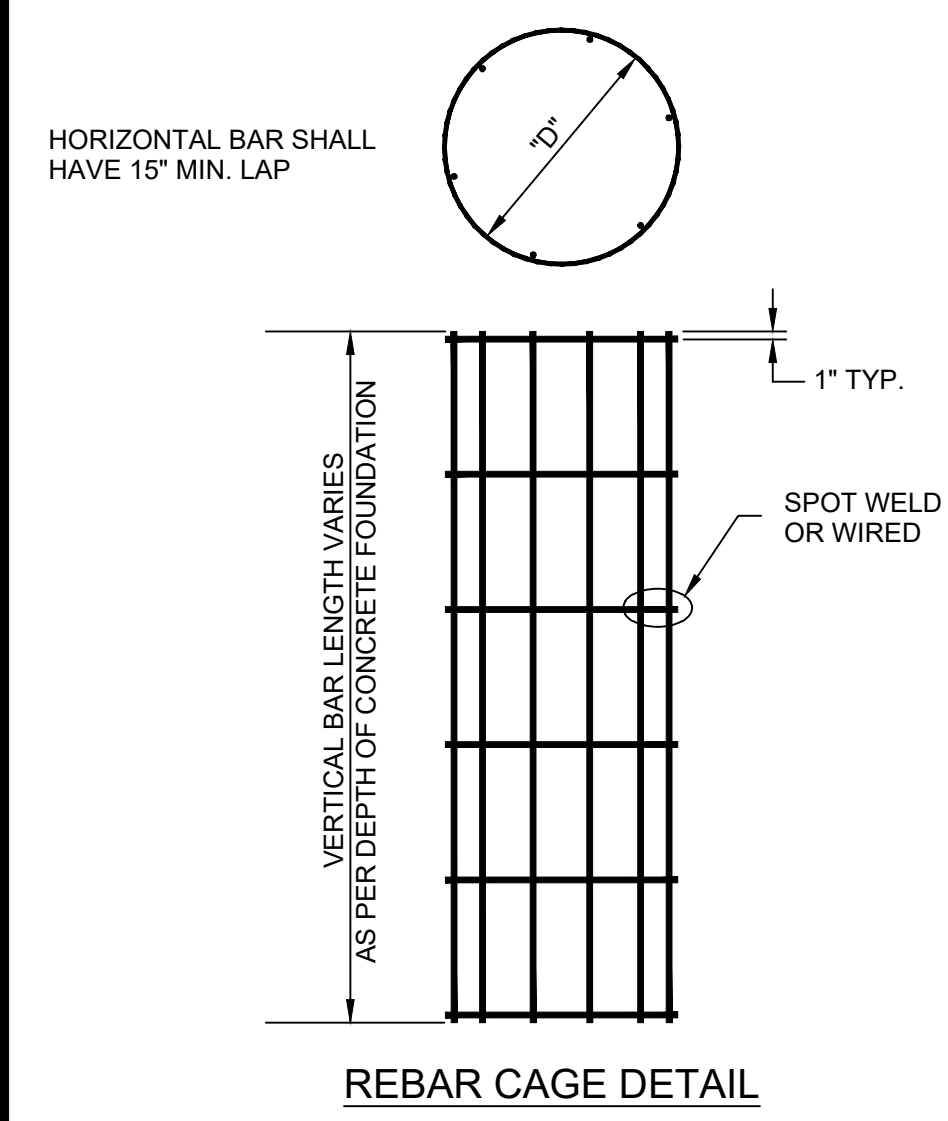
ITEM	UNIT	QUANTITY
40' ALUMINUM POLE (DESIGNATION)	EACH	
40' ALUMINUM POLE (DESIGNATION)	EACH	
40' ALUMINUM POLE (DESIGNATION)	EACH	
40' ALUMINUM POLE (DESIGNATION)	EACH	
30' ALUMINUM POLE (DESIGNATION)	EACH	
30' ALUMINUM POLE (DESIGNATION)	EACH	
30' ALUMINUM POLE (DESIGNATION)	EACH	
30' ALUMINUM POLE (DESIGNATION)	EACH	
20' ALUMINUM POLE - DARK BRONZE ANODIZED	EACH	
14' ALUMINUM POLE	EACH	
CONCRETE FOUNDATION FOR 40' POLE	EACH	
CONCRETE FOUNDATION FOR 30' POLE	EACH	
CONCRETE FOUNDATION FOR 20' POLE	EACH	
CONCRETE FOUNDATION FOR 14' POLE	EACH	
TYPE 1 SCREW IN FOUNDATION	EACH	
TYPE 2A SCREW IN FOUNDATION	EACH	
TYPE 2B SCREW IN FOUNDATION	EACH	
TYPE 3 SCREW IN FOUNDATION	EACH	
TYPE A LUMINAIRE	EACH	
TYPE C LUMINAIRE	EACH	
TYPE D LUMINAIRE	EACH	
TYPE E LUMINAIRE	EACH	
TYPE F LUMINAIRE	EACH	
TYPE Z LUMINAIRE	EACH	
POST TOP LED LUMINAIRE	EACH	
TYPE I JUNCTION BOX	EACH	
TYPE II JUNCTION BOX	EACH	
SERVICE BOX	EACH	
CONTROL CENTER - PAD MOUNTED	EACH	
CONTROL CENTER FOUNDATION	EACH	
CONTROL CENTER GROUND ROD	EACH	
PHOTO CELL (DELAY TYPE)	EACH	
2" CONDUIT	LN. FT.	
1c No. 4 TYPE USE DISTRIBUTION CABLE**	LN. FT.	
1-3c No. 14 POLE & BRACKET CABLE	LN. FT.	
CONNECTOR KIT, FUSED	EACH	
CONNECTOR KIT, UNFUSED	EACH	
MULTIPLE TAP STREET LIGHT CONNECTOR	EACH	
CONDUIT MARKERS	EACH	
GEL-FILLED SPLICE ENCLOSURE (UNDERGROUND SPLICE)	EACH	
TRANSFORMER PAD (FOR POWER)	EACH	
SERVICE CABLE	LN. FT.	
BREAKAWAY BASE	EACH	

\* THESE APPROXIMATE QUANTITIES WERE PREPARED SOLELY FOR THE CONTRACTOR'S CONVENIENCE AND ARE NOT GUARANTEED TO BE A COMPLETE LIST OF MATERIAL FOR THIS PROJECT.

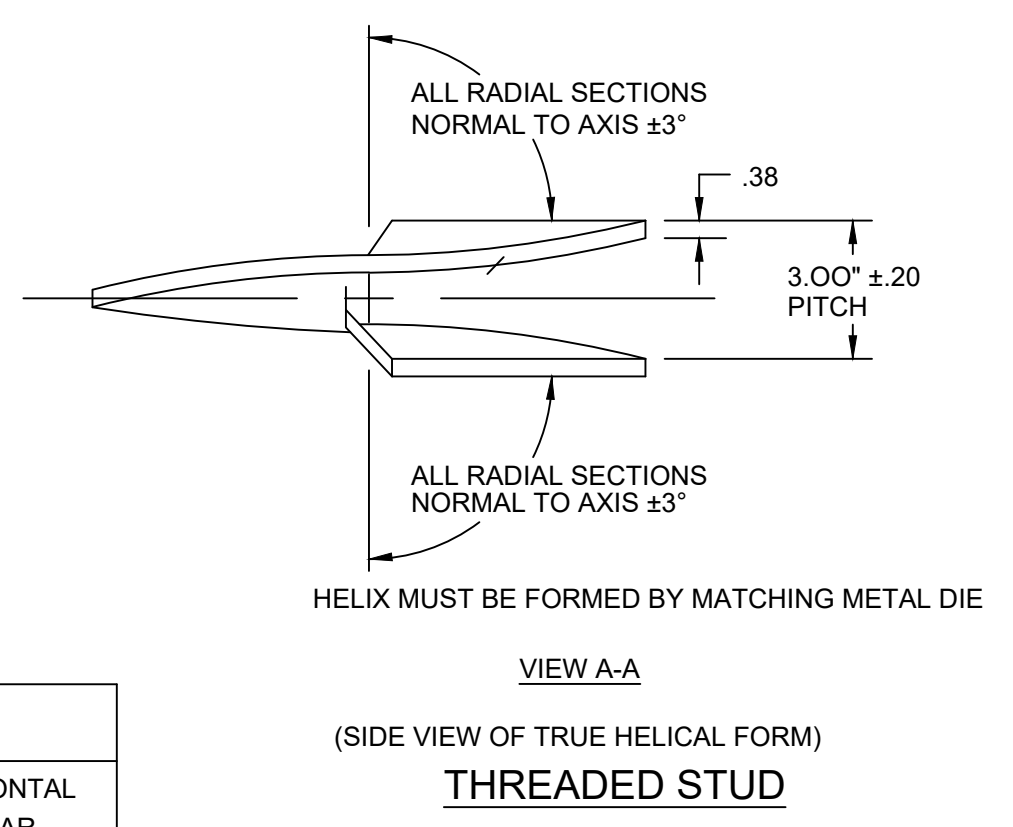
\*\* FOR TOTAL LINEAL FOOTAGE OF 1c No. 4, MULTIPLY THIS QUANTITY BY 3. WIRE LENGTH SHOWN DOES NOT INCLUDE LENGTH FROM BURIED WIRE TO POLE BASE OR SLACK AT SERVICE/JUNCTION BOXES. SEE METHOD OF MEASUREMENT IN LENEXA'S TECHNICAL SPECIFICATIONS.



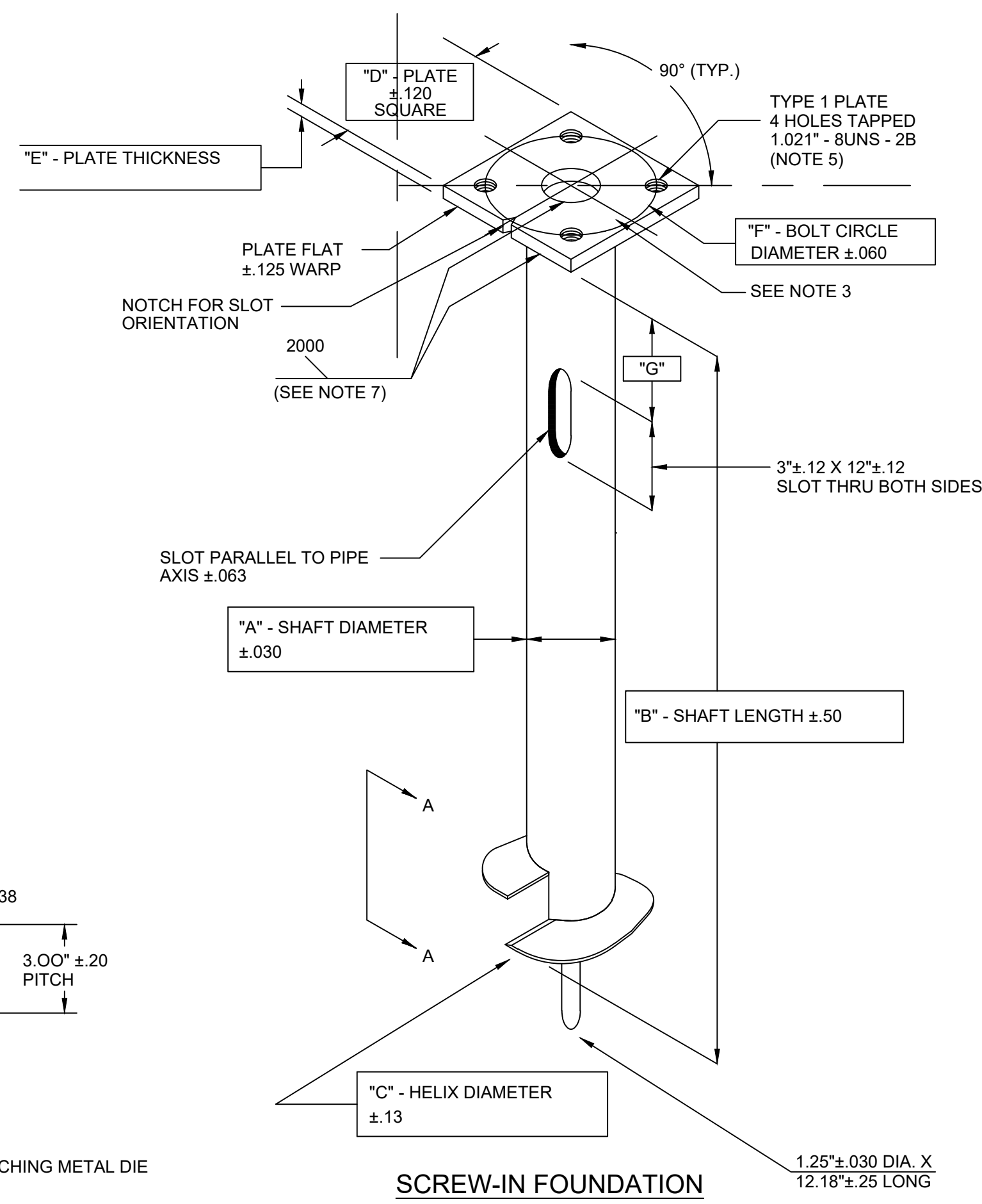
**CONCRETE FOUNDATION DETAILS**



REBAR SCHEDULE				
FDN. DIA.	FDN. LENGTH	REBAR CIRCLE "D"	VERTICAL REBAR LENGTH	HORIZONTAL REBAR SPACING
18"	4'	14"	3'-6"	14" MAX.
24"	6'	20"	5'-6"	14" MAX.
24"	8'	20"	7'-6"	14" MAX.
36"	8'	30"	7'-8"	12" MAX.
36"	10'	30"	9'-8"	12" MAX.
36"	12'	30"	11'-8"	9" MAX.



TYPE	MOUNTING HEIGHT	ARM SPECIFICATION	MAXIMUM TORQUE RATING (lbs ft)	A SHAFT DIA.	B SHAFT LENGTH	C HELIX DIA.	D PLATE SIZE	E PLATE THICKNESS	F BOLT CIRCLE	G SLOT LOCATION
1	14', 20'	-	15,000	6"	48"	12"	10"	0.75"	9.5"	12"
2A	30'	SINGLE/TWIN	15,000	6"	60"	12"	12"	1.0"	11.0"	18"
2B	40'	SINGLE	20,000	8"	60"	14"	14.5"	1.0"	11.5"	18"
3	40'	TWIN	20,000	8"	60"	14"	18"	1.25"	14.5"	18"



**NOTES:**

- FINISH: HOT DIP GALVANIZE PER ASTM-A153 (LATEST REVISION)
- BASEPLATE TO BE PERPENDICULAR TO SHAFT AXIS (±1) AND HOLE AND CONCENTRIC (±.188 I.D. FIM) TO SHAFT AXIS
- ALL BASES SHALL BE IDENTIFIED BY THE MANUFACTURER'S INITIALS AND THE ANCHOR TYPE (1,2 & 3) PERMANENTLY STAMP INTO THE TOP PLATE WITH 1/2" LETTERS. THE JULIAN DATE OF MANUFACTURE SHALL BE PERMANENTLY STAMPED IN 1/4" NUMERALS.
- PILOT POINT AND SHAFT AXES TO BE CONCENTRIC (±.125 FIM) AND IN LINE (±2')
- TAP 1" HOLES ON THE SPECIFIED BOLT CIRCLE PERPENDICULAR TO THE BASEPLATE. CLEAN AND CHASE THE THREADS AFTER HOT-DIP GALVANIZING SO THAT A BOLT MAY BE HAND INSTALLED.
- PREHEAT (ROOM TEMPERATURE 70°F), TUMBLEBLAST, HANDGRIND, AND CLEAN BASEPLATE, HELIX, AND CORE ON ALL WELD AREAS.
- FLAMECUT IRREGULARITIES PERMISSIBLE:  
 (1) VALLEYS NOT TO EXCEED 3/32 IN. BELOW NOMINAL SURFACE LEVEL.  
 (2) PEAKS OR POSITIVE IRREGULARITIES NOT TO EXCEED 1/32 IN. ABOVE NOMINAL SURFACE LEVEL OR INTERSECTIONS OF NOMINAL SURFACES.
- MANUFACTURER TO HAVE IN EFFECT INDUSTRY RECOGNIZED WRITTEN QUALITY CONTROL FOR ALL MATERIALS AND MANUFACTURING PROCESSES.
- ALL MATERIAL IS TO BE NEW, UNUSED AND MILL TRACEABLE MEETING THE FOLLOWING SPECIFICATIONS:  
 BASEPLATE: ASTM A36-(LATEST REVISION) HOT ROLLED STEEL PLATE  
 SHAFT: STEEL PIPE PILES, SEAMLESS OR STRAIGHT WELDED, GRADE 2 PER ASTM A252. ALTERNATE MATERIAL PIPE TYPE E OR S, GRADE B PER ASTM A53.  
 HELIX: ASTM A635-(LATEST REVISION) HOT ROLLED STEEL PLATE  
 PILOT POINT: ASTM A575-(LATEST REVISION) HOT ROLLED STEEL
- ALL 30' AND 40' ALUMINUM LIGHT POLES SHALL BE FURNISHED WITH BREAKAWAY BASES.
- THE DESIGN AND PERFORMANCE INTEGRITY OF THE FOUNDATION SHALL BE VERIFIED BY FULL-SCALE TESTS BY QUALIFIED ENGINEERS INDEPENDENT OF THE MANUFACTURER. CERTIFIED TEST REPORTS SHALL BE PROVIDED UPON REQUEST.
- FLAME CUT NOTCH OR PROJECTION WILL BE ON BASE PLATE TO INDICATE SLOT ORIENTATION.
- FOR LIGHT POLES WITH SCREW-IN FOUNDATIONS, MINOR LEVELING ADJUSTMENTS MAY ABE MADE WITH THE USE OF LEVELING SHIMS OR WASHERS. SHIMS AND WASHERS SHALL BE GALVANIZED OR CADMIUM-PLATED STEEL NO MORE THAN 0.25" THICK. ONLY ONE SHIM OR WASHER WILL BE PERMITTED AT ANY ONE ANCHOR BOLT WITH A MAXIMUM OF TWO PER POLE.
- CONCRETE FOUNDATIONS FOR LIGHT POLES SHALL BE USED WHEN THE LIGHT POLE IS TO BE INSTALLED IN THE SIDEWALK OR WITHIN 1.5' (18") FROM THE CENTER OF THE POLE TO THE EDGE OF THE SIDEWALK.
- ALL CONDUITS AND ANCHOR BOLTS FOR CONTROL PADS AND POLE FOUNDATIONS SHALL BE RIGIDLY INSTALLED BEFORE CONCRETE IS PLACED. ANCHOR BOLTS SHALL BE SPACED BY MEANS OF A TEMPLATE, THE CENTER OF WHICH SHALL COINCIDE WITH THE CENTER OF THE BASE.
- ALL CONCRETE POLE BASES SHALL BE PLACED IN TWO SEPARATE PLACEMENTS. THE FINAL 6 INCHES SHALL BE PLACED AFTER THE POLE IS SET AND FINAL ADJUSTMENTS HAVE BEEN MADE.

www.lenexa.com 2017

REVISED DATE:	08/17
DETAILED:	BKC
APPROVED:	---

**Lenexa**  
KANSAS

**QUANTITIES AND POLE FOUNDATIONS**

SHEET D-700