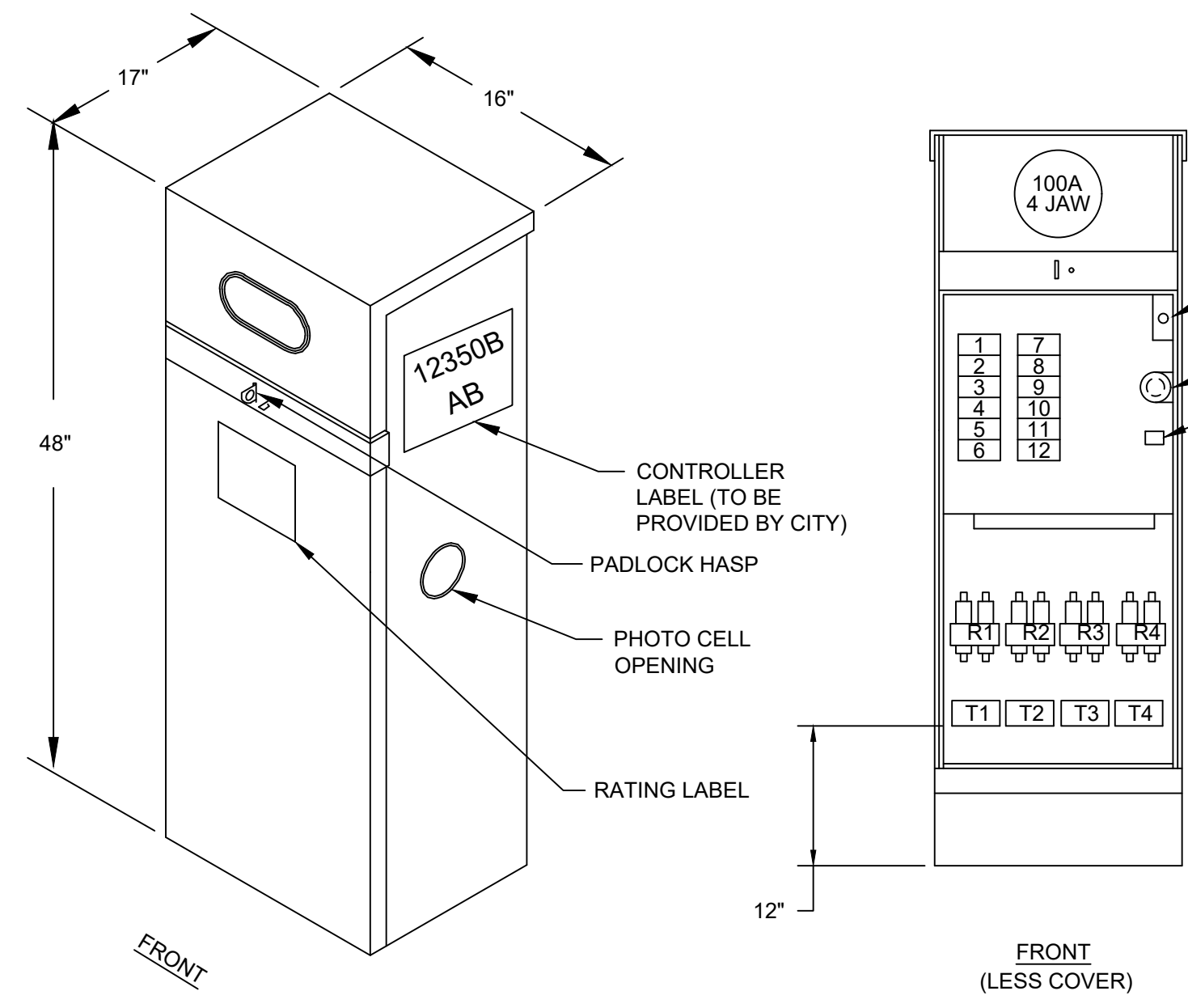


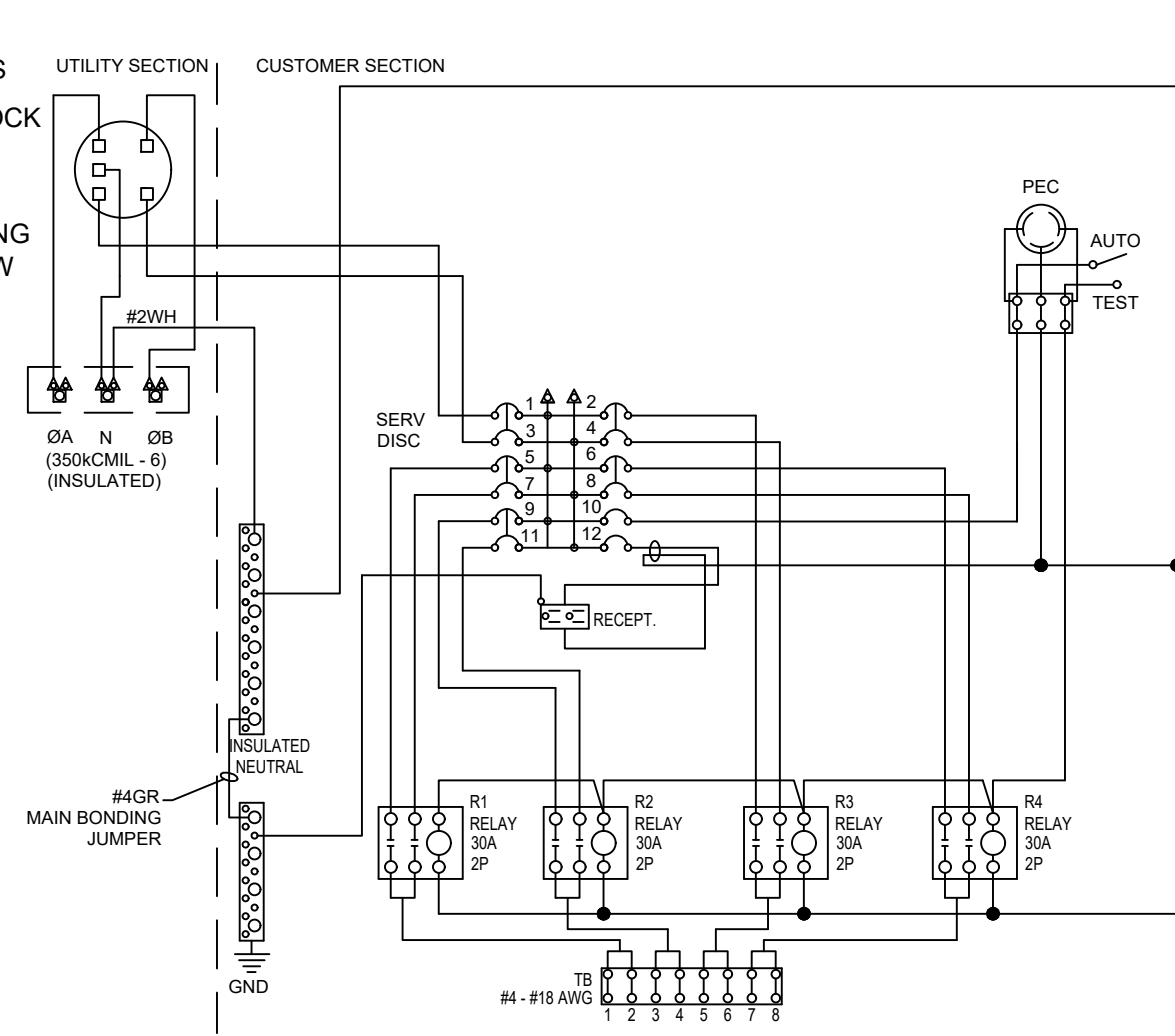
MATERIAL LIST

1. LANDING LUGS 350kCML-6 PER PH
2. MTR SOCKET 200A 5J with HORN BY-PASS
3. MAIN CB 100A 2P 120/240VAC 10kAIC
4. LOAD CENTER 125A 12CKT 1-PHASE
5. (4) CB 30A 2P 120/240VAC 10kAIC
6. (1) CB GFCI 20A 1P 120/240VAC 10kAIC
7. (1) CB 15A 1P 120/240VAC 10kAIC
8. (4) MERCURY RELAY 30A 2P MDI
9. (1) TERM BLK 8P 85A #4 - #18 AWG
10. (1) RECEPTACLE 20A 120V DUPLEX
11. SWITCH TOGGLE SPST 20A
12. PE RECEPTACLE
13. INSULATED NEUTRAL BUS
14. GROUND BUS
15. CORBIN / PELCO TYPE 2 LOCK

CIRCUIT DIRECTORY				
NO.	DESCRIPTION	QTY	AMP	POLE
1,2	MAIN	1	100	2
3,4	BRKR. 1	1	30	2
5,6	BRKR. 2	1	30	2
7,8	BRKR. 3	1	30	2
9,10	BRKR. 4	1	30	2
11	BRKR. 5	1	15	1
12	BRKR. 6	1	20	1
	RELAY 1	1	30	2
	RELAY 2	1	30	2
	RELAY 3	1	30	2
	RELAY 4	1	30	2



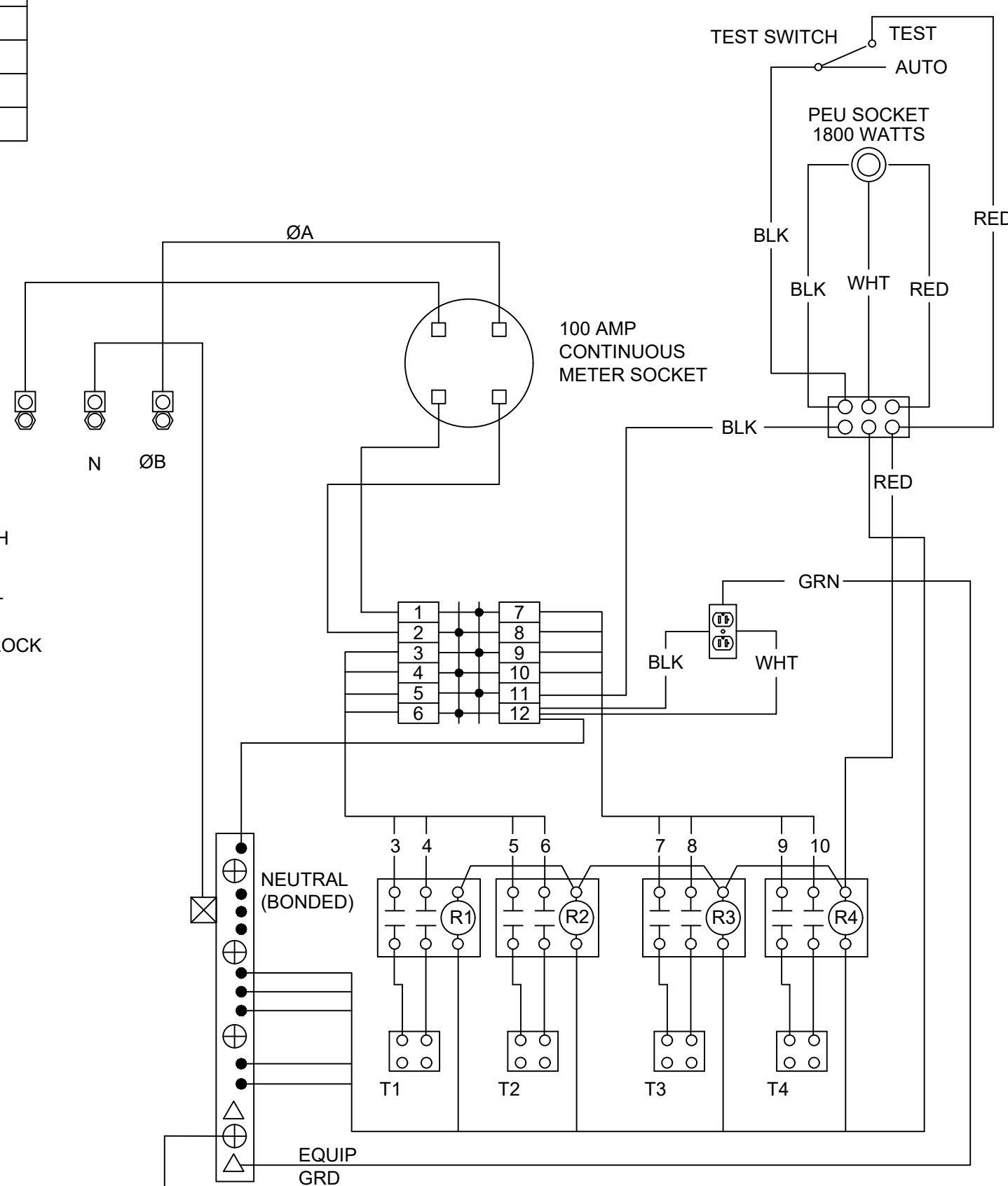
PAD-MOUNTED CONTROL CENTER



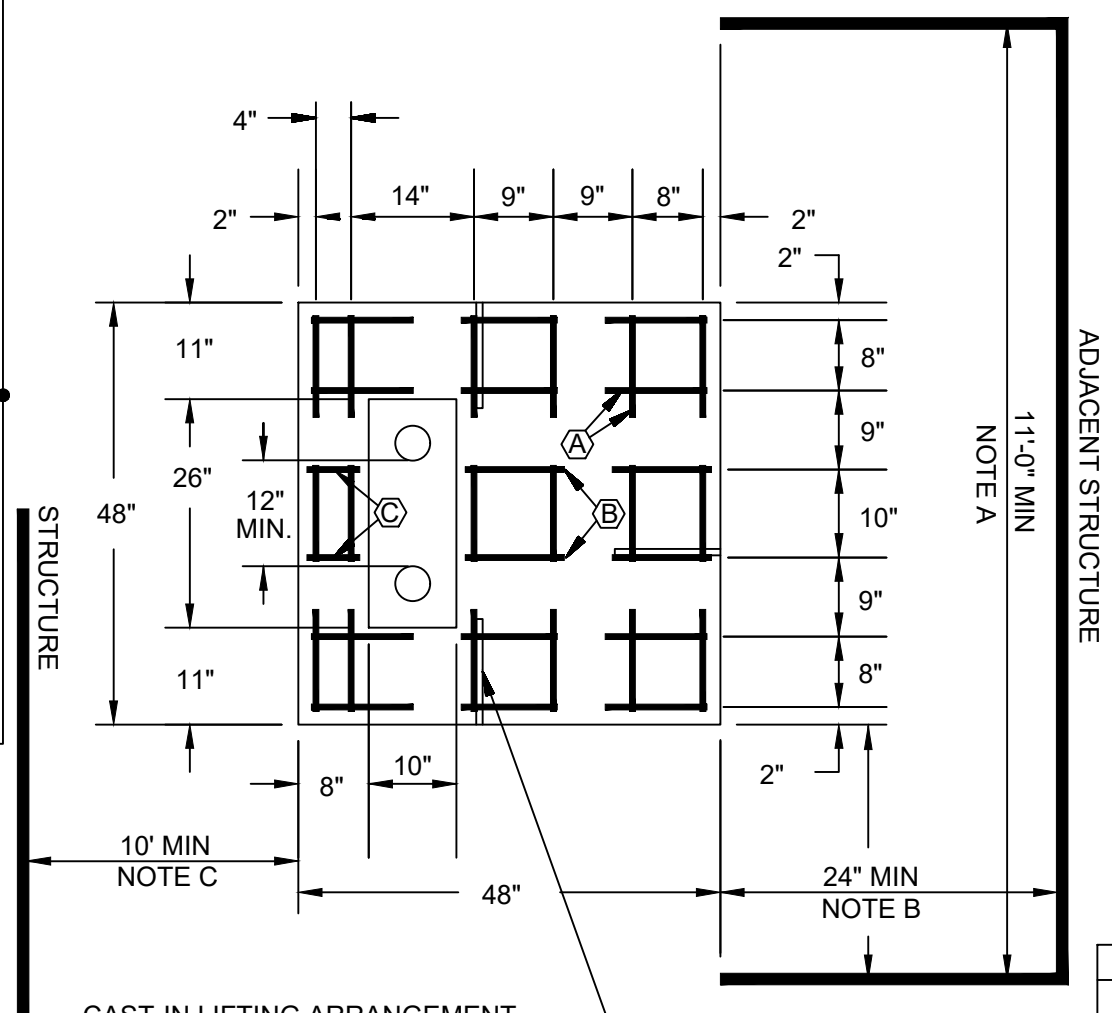
WIRING DIAGRAM

CONTROL CENTER NOTES:

1. ENCLOSURE TO BE ALUMINUM.
2. 20 A. 1-POLE CIRC. BREAKER, "CONTROL".
3. ALL FACTORY INSTALLED WIRE TO BE COPPER.
4. ALL TERMINALS APPROVED FOR COPPER OR ALUM. WIRE.
5. COPPER BUSSED CIRCUIT BREAKER INTERIOR.
6. PADLOCK PROVISIONS.
7. FINISH: BRUSHED ALUMINUM.



WIRING DIAGRAM



PAD USING REINFORCING RODS

STEEL REINFORCING BAR REQ'D			
BAR	QUANTITY	SIZE	LENGTH
Ⓐ	10	4	45"
Ⓑ	2	4	28" 12"
Ⓒ	2	4	6"

NOTE A:

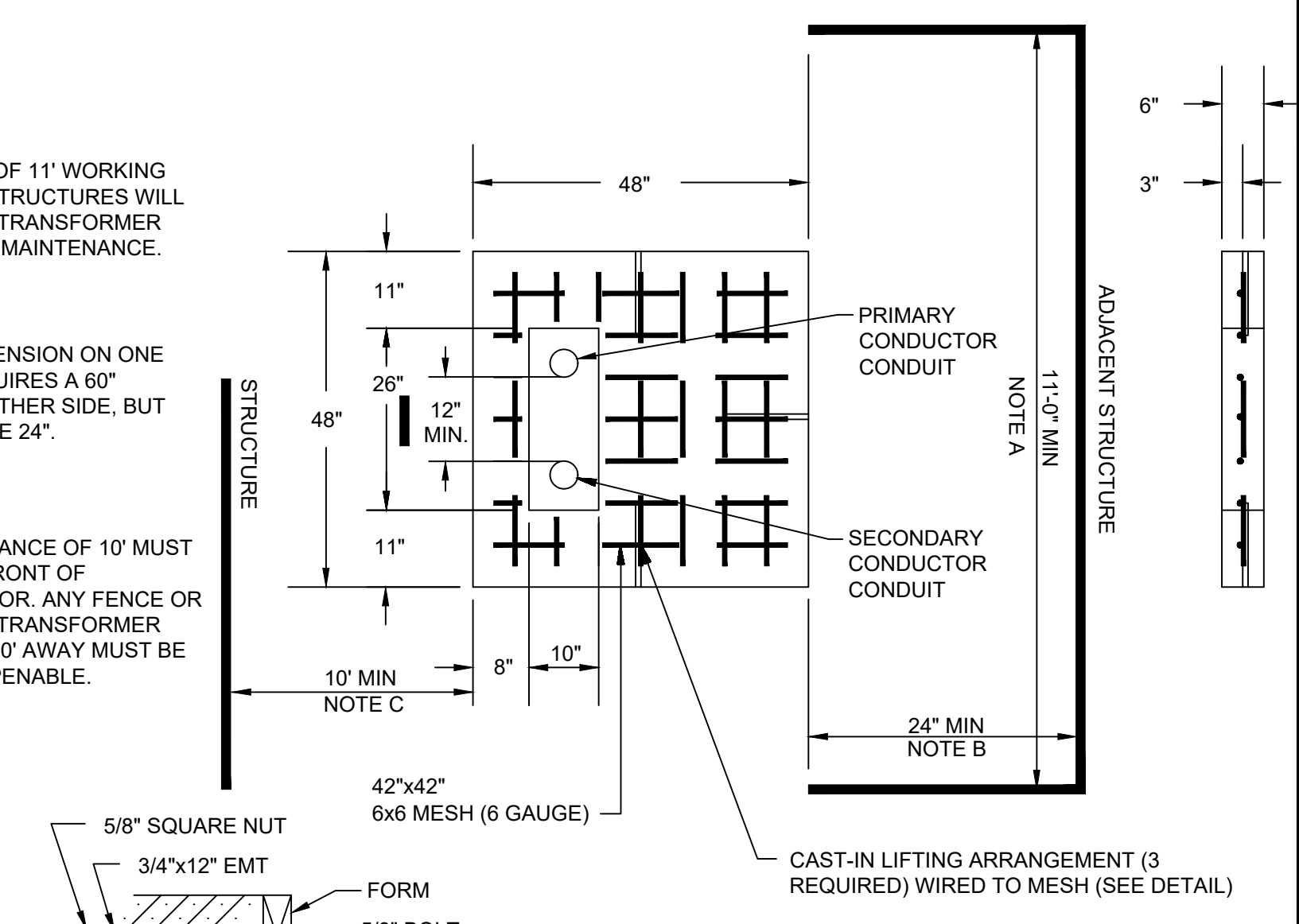
A MINIMUM WIDTH OF 11' WORKING SPACE BETWEEN STRUCTURES WILL BE REQUIRED FOR TRANSFORMER INSTALLATION AND MAINTENANCE.

NOTE B:

A 24" MINIMUM DIMENSION ON ONE SIDE OF BASE REQUIRES A 60" MINIMUM ON THE OTHER SIDE, BUT EITHER SIDE MAY BE 24".

NOTE C:

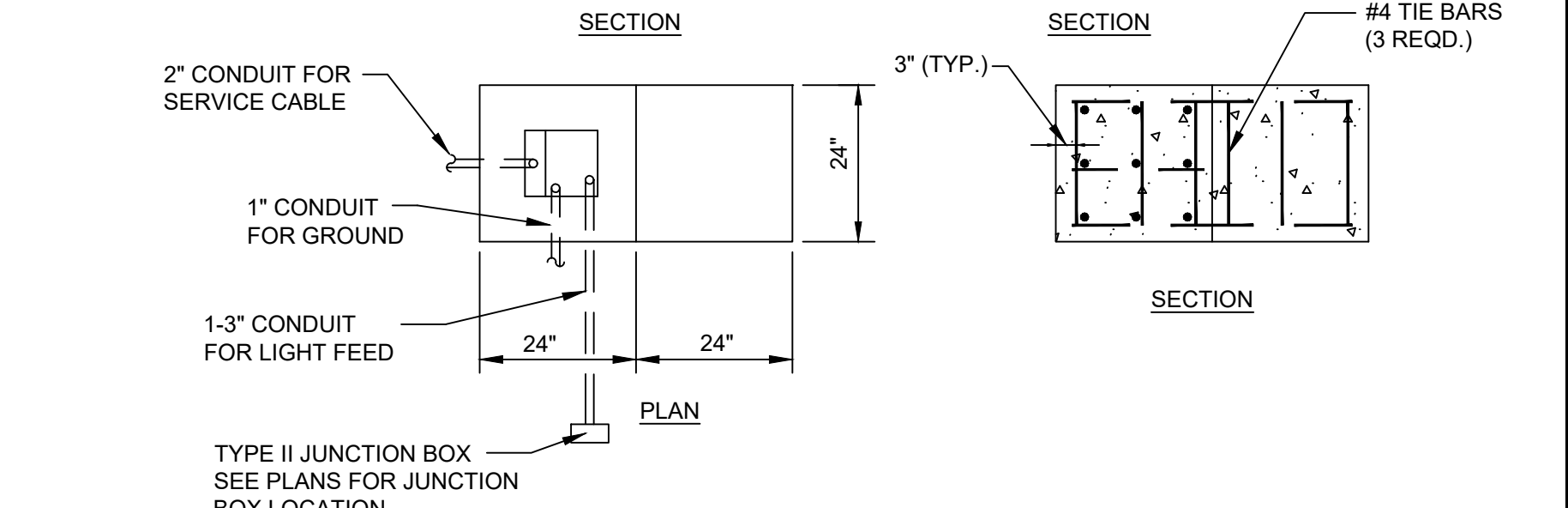
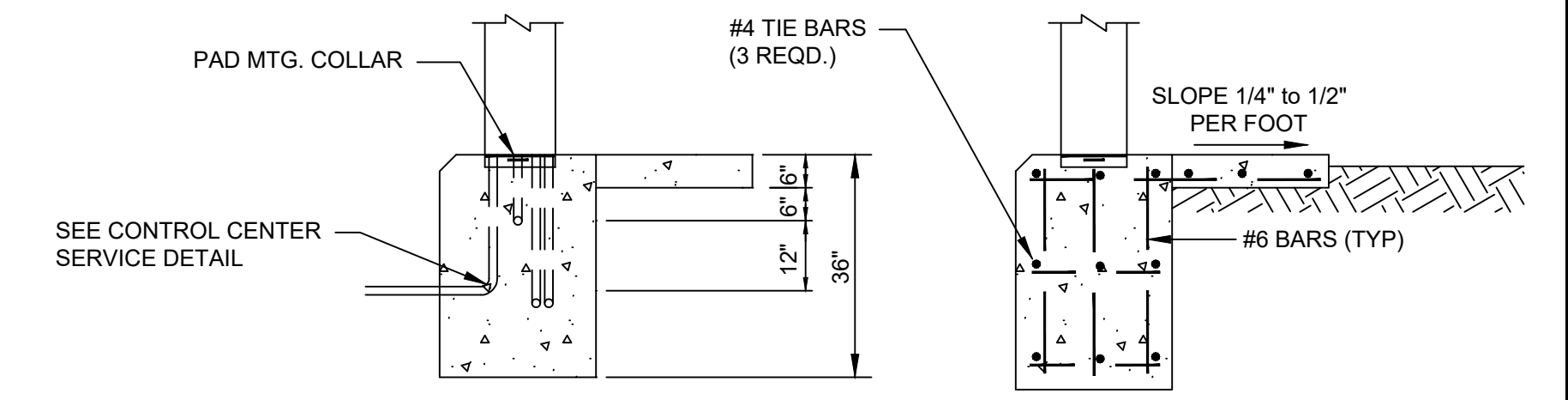
A WORKING CLEARANCE OF 10' MUST BE AVAILABLE IN FRONT OF TRANSFORMER DOOR. ANY FENCE OR WALL IN FRONT OF TRANSFORMER DOOR LESS THAN 10' AWAY MUST BE REMOVABLE OR OPENABLE.



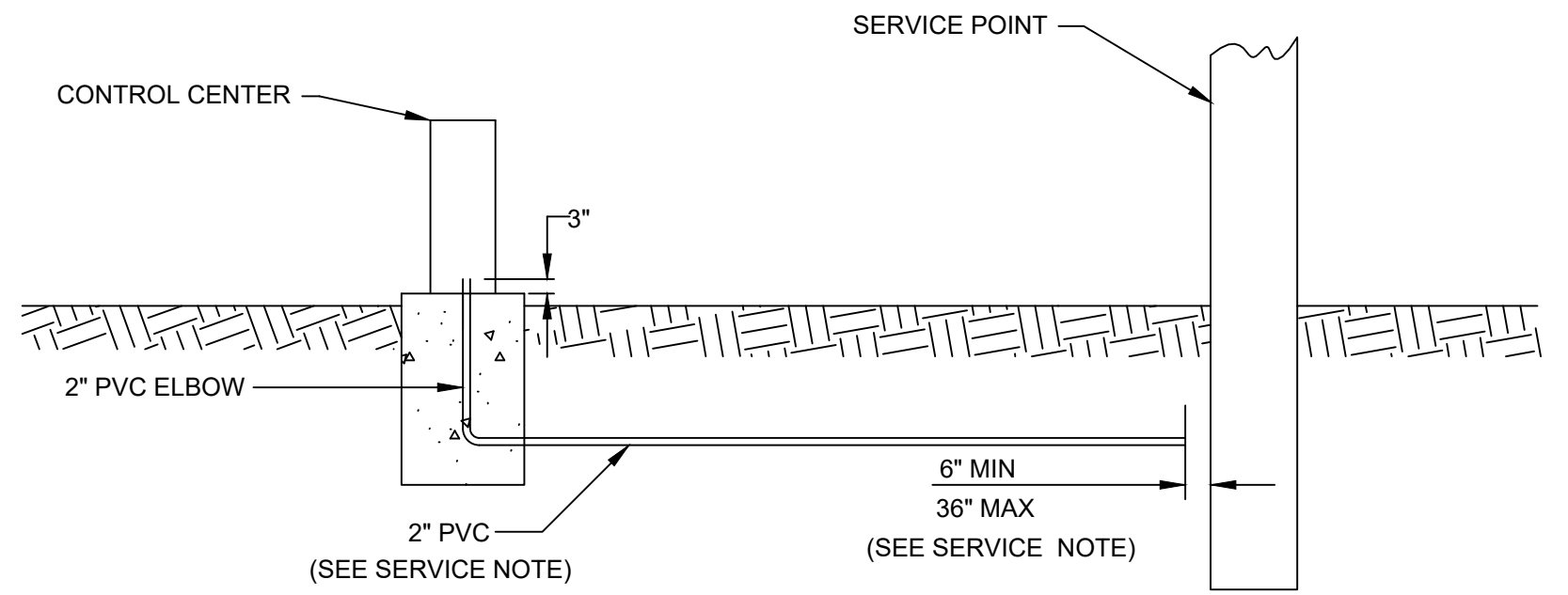
PAD USING REINFORCING MESH

PREMOLDED CONCRETE BASE 1-PHASE TRANSFORMER PAD STOCK NO. 453-120
 CONCRETE REQUIRED - APPROXIMATELY 7 CUBIC FEET
 CONCRETE SHALL BE AIR ENTRAINING USING A FLY ASH MIX AND TEST
 4500 PSI AT 28 DAYS. 3/4" MAXIMUM ROCK SIZE.

TRANSFORMER PAD



CONCRETE FOUNDATION FOR CONTROL CENTER



CONTROL CENTER SERVICE

CONTROL CENTER SERVICE NOTES:

1. CONTRACTOR SHALL PROVIDE GROUND ROD(S) AS REQUIRED FOR MAXIMUM OF 25 OHMS RESISTANCE TO GROUND.
2. THE CONCRETE SLAB SHALL PROVIDE A SEMI-DRY WORKING AREA IN FRONT OF CONTROLLER CABINET.

SERVICE NOTE:

CONTRACTOR SHALL INSTALL 2" PVC CONDUIT AND SERVICE CABLE (30" DEEP) FROM THE METER TO THE SERVICE POINT. SERVICE CABLE SHALL HAVE AN AMPACITY RATING NOT LESS THAN 80 PERCENT OF THE MAXIMUM RATING OF THE CONTROL CENTER.

REVISED DATE:	08/17
DETAILED:	BKC
APPROVED:	---



CONTROL CENTER & CONNECTORS