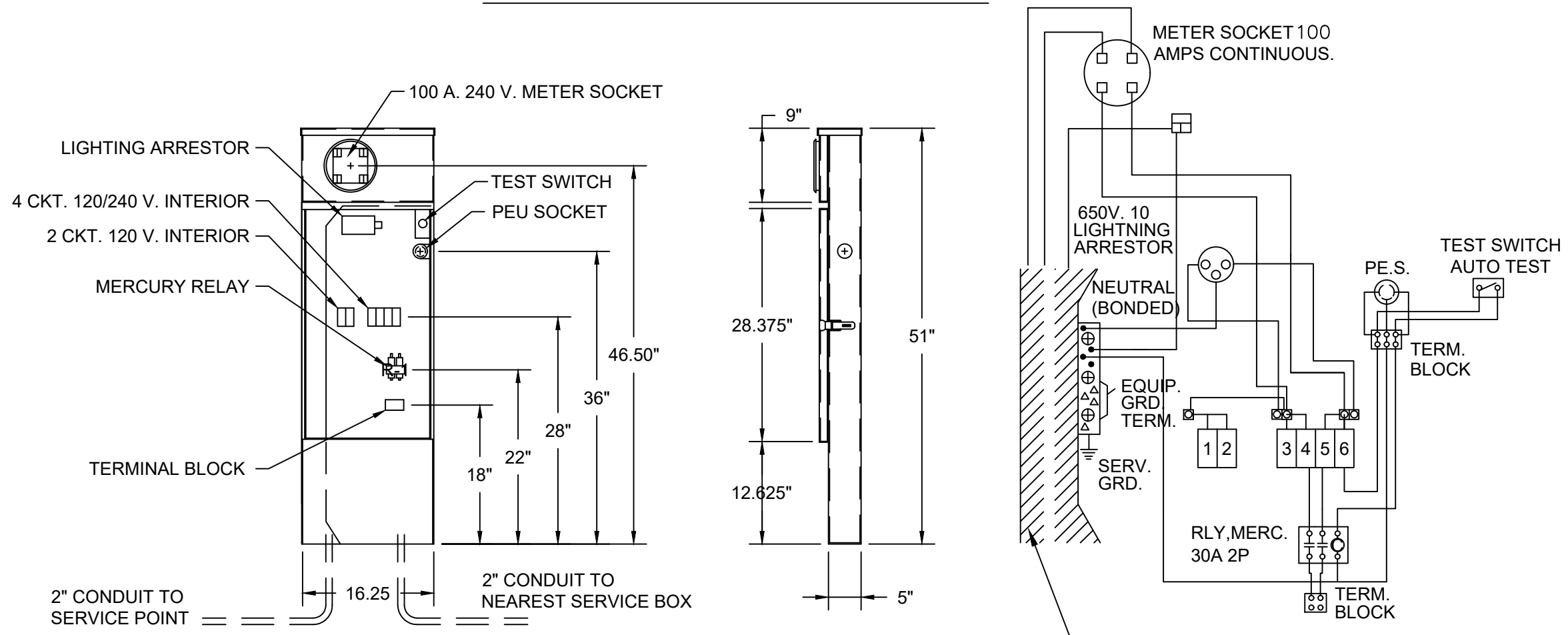


NOTE:
CONTRACTOR TO PROVIDE A 36\"/>

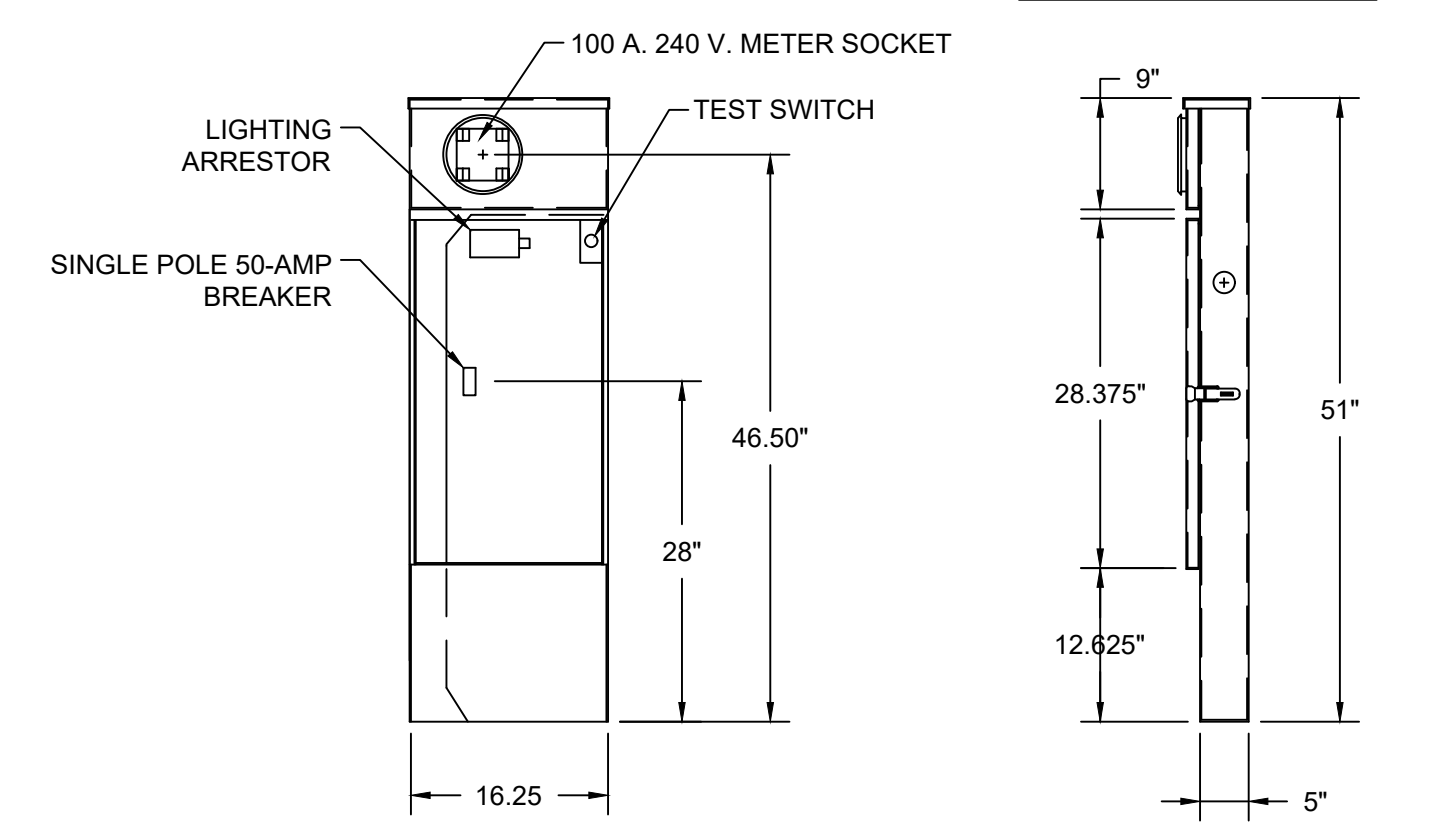
SECONDARY POWER SERVICE NOTES:

1. THE CONTRACTOR SHALL INSTALL 2\"/>

SECONDARY POWER SERVICE DETAIL



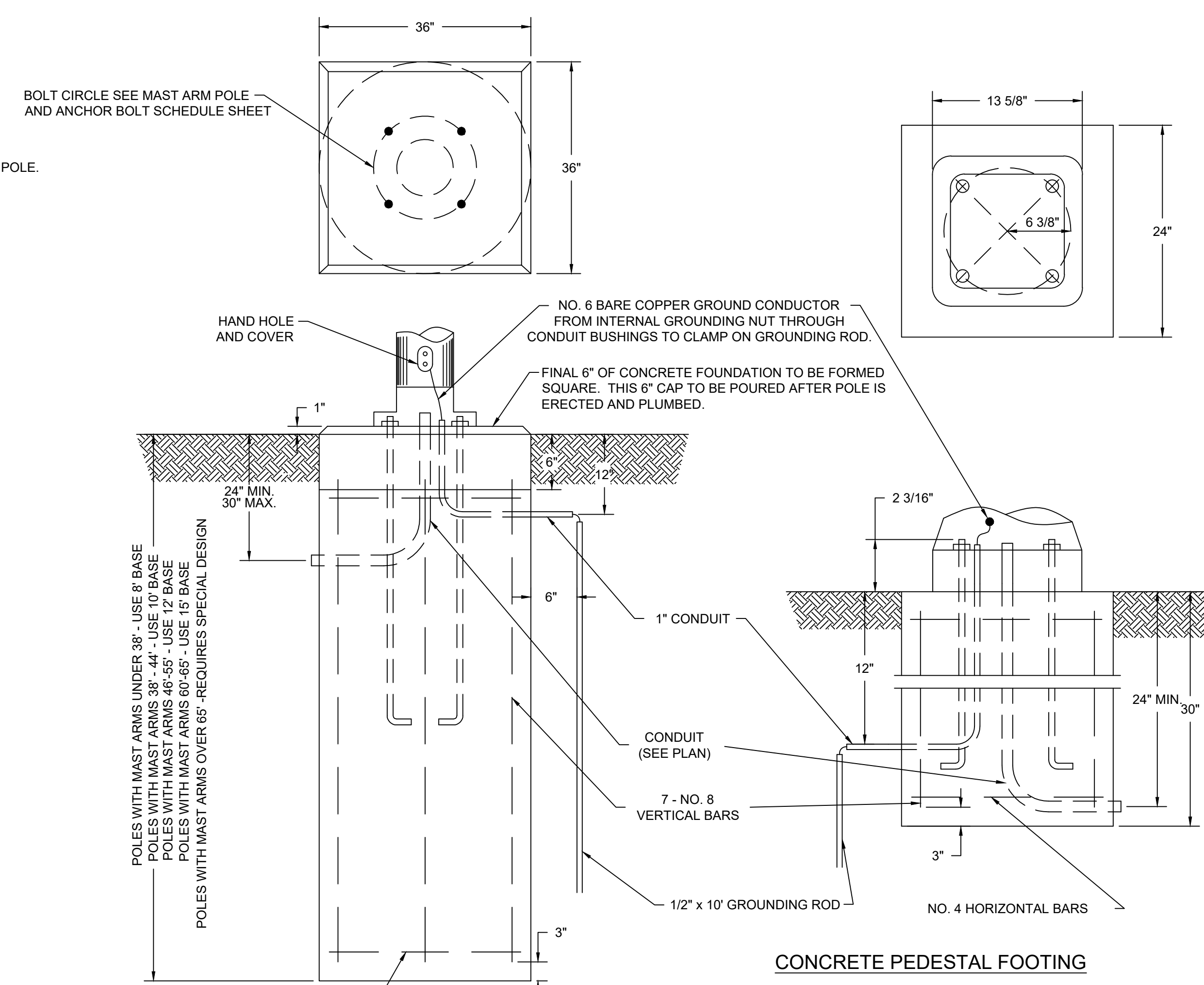
SERVICE ENCLOSURE WITH PHOTOCELL



SERVICE ENCLOSURE WITHOUT PHOTOCELL

SERVICE ENCLOSURE NOTES:

1. THE SERVICE ENCLOSURE SHALL BE AN MET2-VLM-LTS OR MET2-VLM-TS OR APPROVED EQUAL.
2. A WATERTIGHT SEAL SHALL BE PROVIDED BETWEEN THE SERVICE ENCLOSURE AND THE CONCRETE PAD.
3. WHEN STREET LIGHTS MOUNTED TO SIGNAL POLES OR STREET LIGHTS ON LIGHT POLES ARE POWERED THROUGH THE SIGNAL CONTROLLER, THE SERVICE ENCLOSURE SHALL BE A MYERS MET2-VLM-LTS. THE MEYERS MET2-VLM-LTS SHALL ALSO BE USED TO POWER THE LED ILLUMINATED STREET NAME SIGNS.



CONCRETE POLE FOOTING

ANCHOR BOLT DETAIL FOR COMBINATION LIGHTING / SIGNAL POLE

CONCRETE PEDESTAL FOOTING

REBAR CAGE DETAIL

CIRCUIT DIRECTORY			
NO.	DESCRIPTION	AMP	POLE
1	SIGNALS	50	1
4-5	LIGHTING	30	2
6	CONTROL-PE	15	1

CIRCUIT DIRECTORY			
NO.	DESCRIPTION	AMP	POLE
1	SIGNALS	50	1
2	SPACE		
3	SPACE		
4	SPACE		

GENERAL NOTES:

1. ALL CONDUITS AND ANCHOR BOLTS FOR CONTROL PADS AND TRAFFIC SIGNAL POLE BASES SHALL BE RIGIDLY INSTALLED BEFORE CONCRETE IS PLACED. ANCHOR BOLTS SHALL BE SPACED BY MEANS OF A TEMPLATE, THE CENTER OF WHICH SHALL COINCIDE WITH THE CENTER OF THE BASE.
2. BUSHINGS SHALL BE ATTACHED TO ALL CONDUIT ENDS.
3. WHERE CONCRETE FOOTINGS OR PADS ARE INSTALLED ON A SLOPE, THE TOP ELEVATION SHALL BE ESTABLISHED ONE INCH ABOVE THE HIGHEST ADJACENT POINT AND MINIMUM DEPTHS SHALL BE MEASURED FROM THE LOWEST ADJACENT POINT. CONTRACTOR SHALL PROVIDE APPROVED BACKFILL AND GRADE AROUND FOOTINGS OR PADS AS DIRECTED BY THE ENGINEER.
4. CONDUITS EXTENDED INTO CONCRETE FOOTINGS OR PADS SHALL TERMINATE 3 TO 4 INCHES ABOVE THE TOP OF THE FOOTING OR PAD.
5. ALL SIGNAL POLE BASES SHALL BE PLACED IN TWO PLACEMENTS. THE FINAL 6 INCHES SHALL BE PLACED AFTER THE POLE IS SET AND FINAL ADJUSTMENTS HAVE BEEN MADE.

REBAR SCHEDULE				
BASE DIA.	BASE LENGTH	REBAR CIRCLE "D"	VERT. REBAR LENGTH "A"	HOR. REBAR SPACING
24"	30"	20"	2' - 0"	12" MAX.
36"	8' - 0"	30"	7' - 8"	12" MAX.
36"	10' - 0"	30"	9' - 8"	12" MAX.
36"	12' - 0"	30"	11' - 8"	9" MAX.