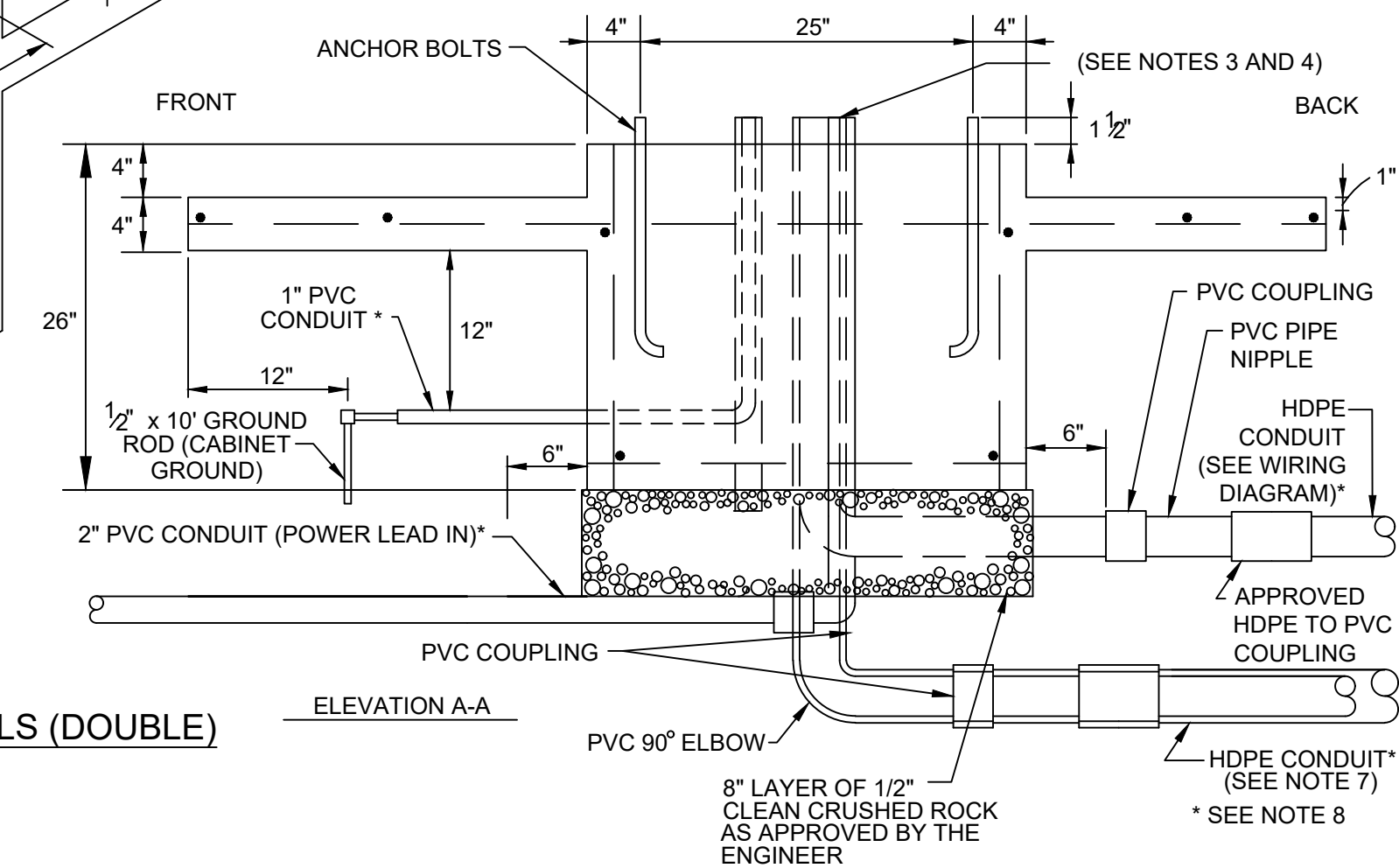
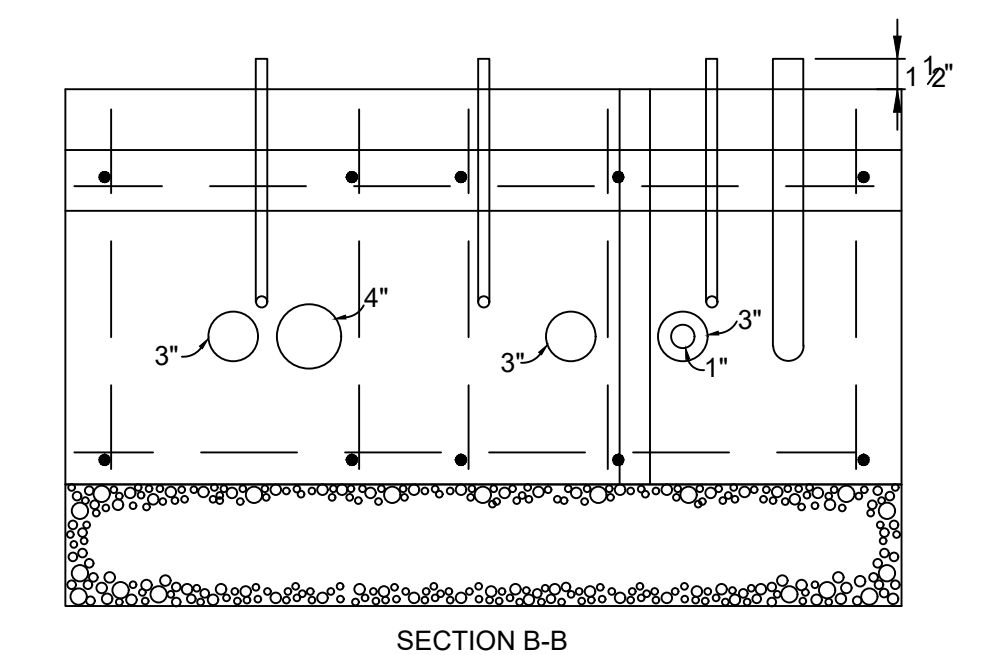
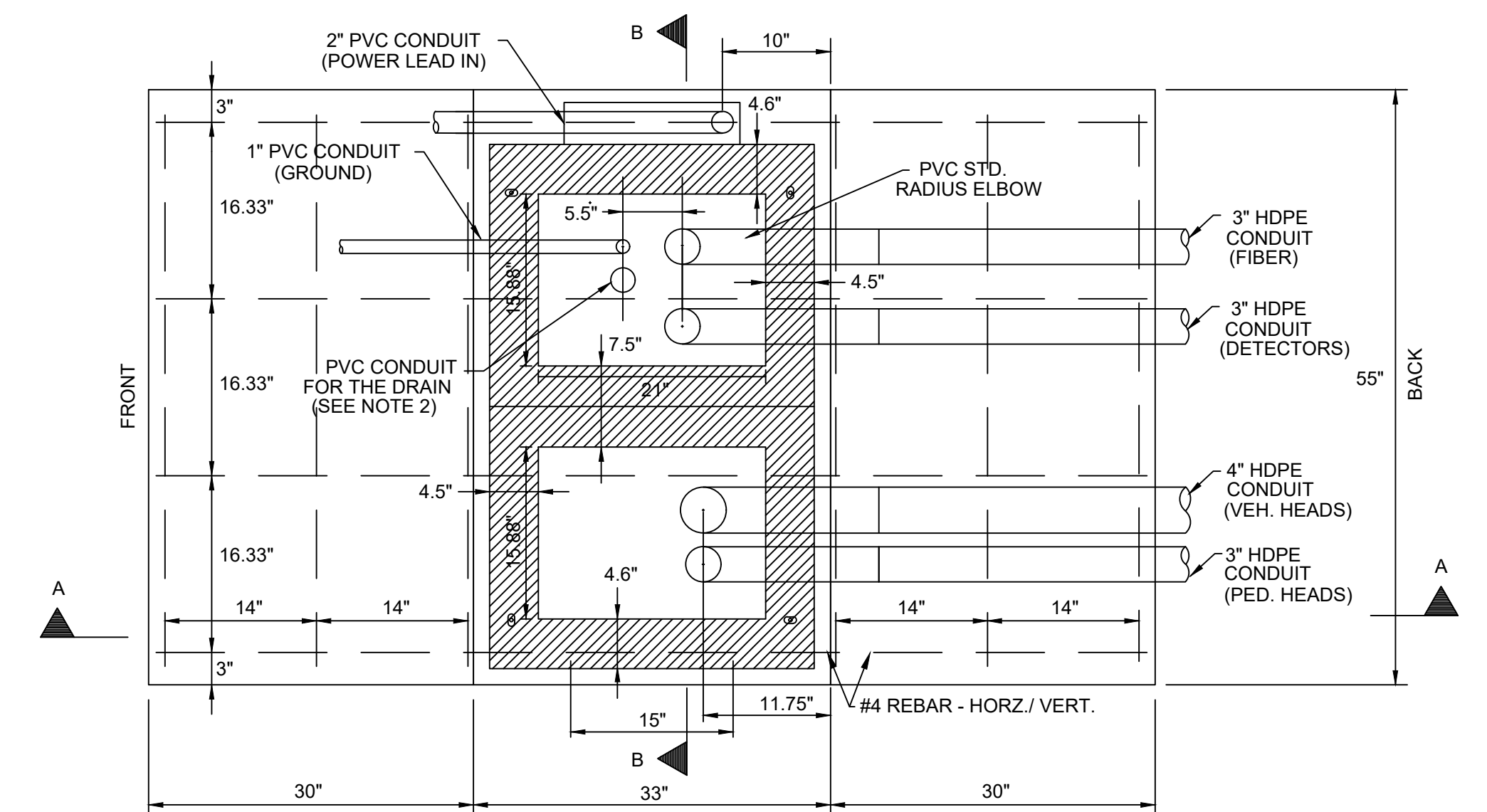
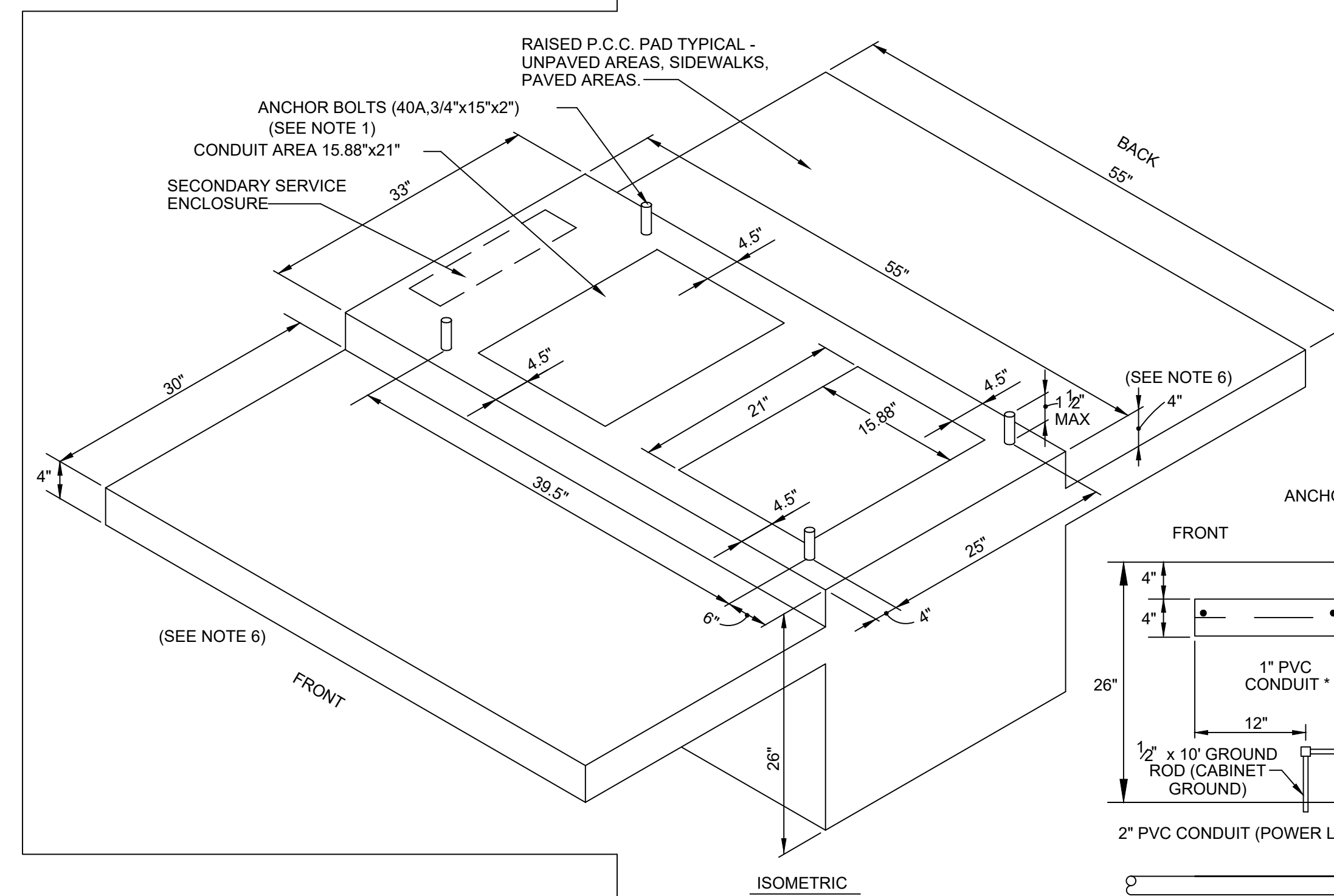
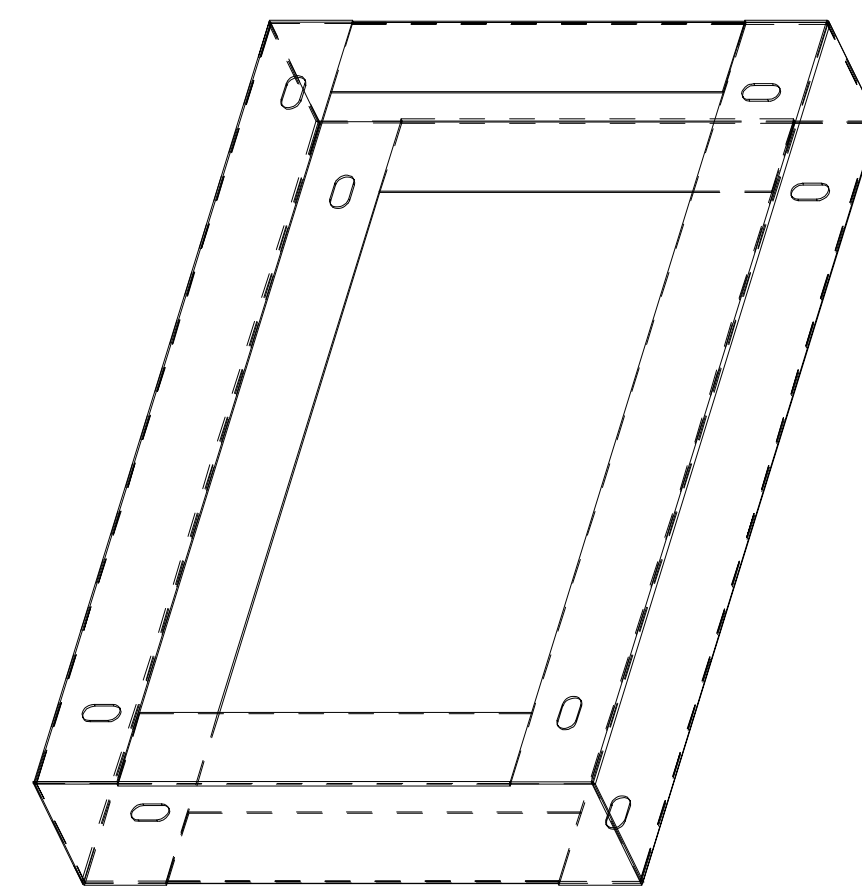
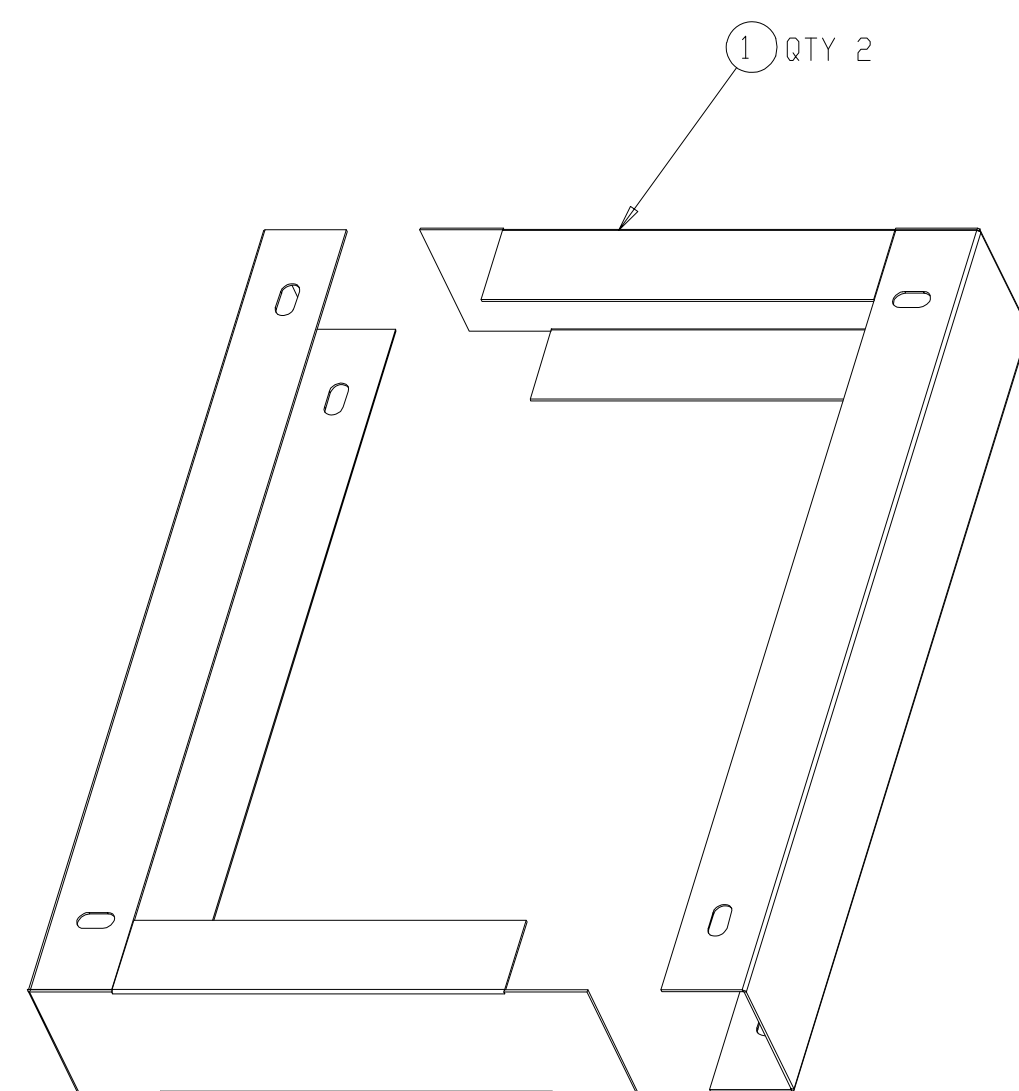


- NOTES
- CONTINUOUSLY WELD ALL SEAMS.
 - WELDS ON MOUNTING SURFACES (TOP AND BOTTOM) SHOULD BE SMOOTH AND FLAT.



CONTROLLER PAD DETAILS (DOUBLE)

- SIGNAL CONTROLLER PAD NOTES:**
- ALL CONDUITS AND ANCHOR BOLTS SHALL BE RIGIDLY INSTALLED BEFORE CONCRETE IS PLACED.
 - TOP OF PAD TO BE SLOPED TO DRAIN.
 - A 1-#10 THHN/THWN STRANDED COPPER SYSTEM GROUND CABLE SHALL BE INSTALLED THROUGH ONE OF THE HDPE CONDUITS BETWEEN THE CONTROLLER AND CLOSEST SERVICE BOX (SEE CONTROLLER CABINET GROUNDING DETAIL). DUCT SEAL SHALL BE APPLIED AT ALL CONDUIT ENTRANCES AFTER CABLE INSTALLATION.
 - A WATERTIGHT SEAL SHALL BE APPLIED ALONG THE INSIDE AND OUTSIDE EDGES OF THE CABINET WHERE IT ABUTS TO THE CONCRETE PAD AND AROUND THE SECONDARY SERVICE ENCLOSURE WHERE IT ABUTS TO THE CABINET.
 - 4" IS NOMINAL DIMENSION. 2"x4" FORMS ARE ACCEPTABLE EXCEPT WHERE OTHERWISE NOTED OR DIRECTED (EXPOSED CONCRETE SURFACES SHALL BE FORMED BY OTHER MEANS FOR AN ACCEPTABLE FINISHED APPEARANCE).
 - SCHEDULE 40 HDPE CONDUIT (ORANGE IN COLOR) WITH A #10 THHN/THWN STRANDED COPPER LOCATING CABLE AND POLYPROPYLENE PULL ROPE SIZED PER PLAN.
 - PVC CONDUIT ELBOWS IN CONCRETE FOUNDATIONS SHALL BE CONNECTED TO HDPE CONDUIT WITH PVC PIPE NIPPLE AND APPROVED PVC TO HDPE COUPLINGS. ALL PVC CONDUIT AND ELBOWS SHALL BE CONSIDERED SUBSIDIARY TO THE TRAFFIC SIGNAL CONTROLLER PAD.
 - CONTRACTOR TO INSTALL CONCRETE ANCHORS AND BOLTS PER MANUFACTURER'S RECOMMENDATION TO ANCHOR SECONDARY SERVICE/BATTERY BACKUP ENCLOSURE TO CONCRETE FOUNDATION. ALSO ANCHOR TO SIGNAL CABINET WITH SHEET METAL SCREWS.
 - NON-HARDENING DUCT SEALANT TO BE APPLIED TO CONDUIT ENTRANCES.
 - PROVIDE WATERTIGHT SEAL BETWEEN THE CONTROLLER CABINET AND THE CONCRETE PAD.
 - CONTROLLER PAD TO BE EXCAVATED AND FORMED TO THE DIMENSIONS SHOWN WITHOUT DISTURBING THE AREAS OF ADJACENT SUBGRADE.
 - THE ENGINEER IN CHARGE OF CONSTRUCTION SHALL DETERMINE THE ORIENTATION OF THE CONTROLLER PAD.
 - CONTRACTOR TO PROVIDE A SPARE TWO INCH LARGE SWEEP PVC CONDUIT ENTRANCE IN CONCRETE PAD TO NEAREST SERVICE BOX. BOTH ENDS OF CONDUIT TO BE SECURELY CAPPED.
 - WHEN TYPE MET2-VLM IS USED THE CONDUIT FOR POWER SHOULD BE OFFSET TO ALLOW FOR CENTERING OF THE POWER CONTROL CABINET ON THE SIDE OF THE SIGNAL CONTROL BOX.
 - ONE GROUND ROD IS REQUIRED FOR THE CABINET.

www.lenexa.com 2017

REVISED DATE:	08/17
DETAILED:	BKC
APPROVED:	---

Lenexa
KANSAS

TRAFFIC SIGNAL FOUNDATION DETAIL

SHEET D-803