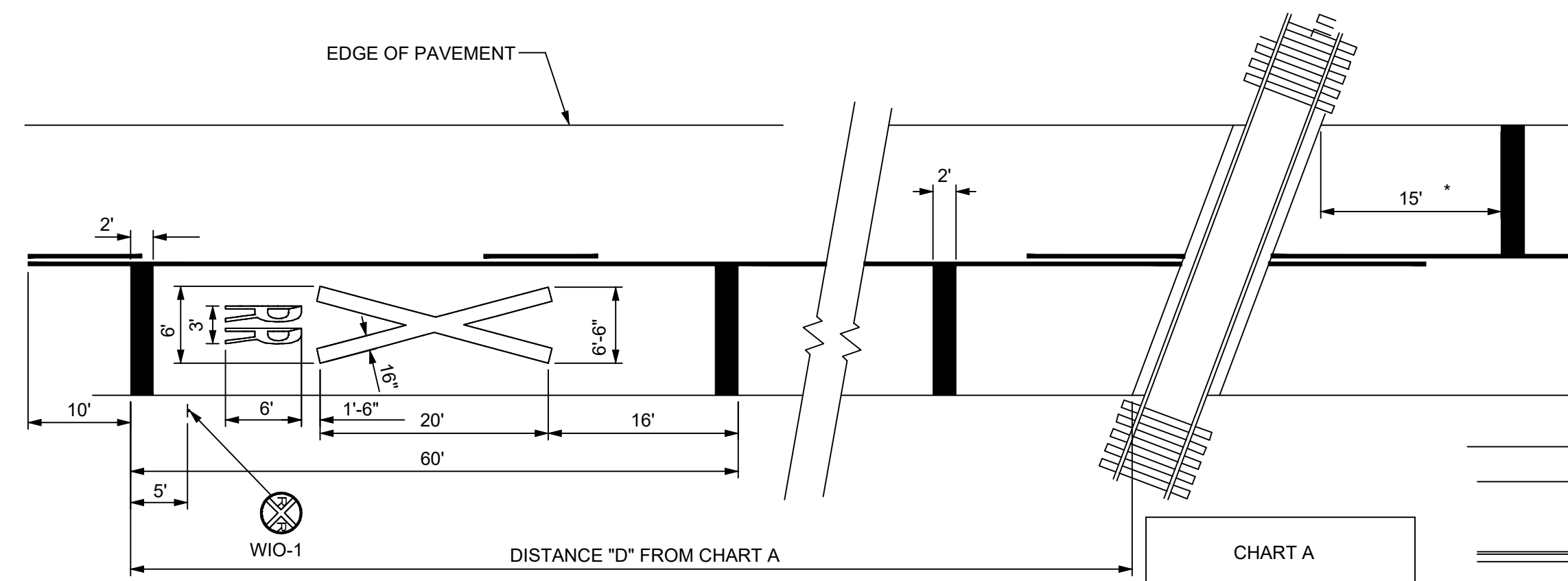


TYPICAL MARKINGS FOR FOUR-LANE ROADWAY  
IN COMBINATION WITH  
WITH TYPICAL SIDE STREET TREATMENT



A THREE LANE ROADWAY SHOULD BE MARKED WITH A CENTERLINE FOR TWO LANE APPROACH OPERATION ON THE APPROACH TO A CROSSING.

ON MULTI-LANE ROADS THE TRANSVERSE BANDS SHOULD EXTEND ACROSS ALL APPROACH LANES, AND INDIVIDUAL R X R SYMBOLS SHOULD BE USED IN EACH APPROACH LANE.

REFER TO STANDARD ALPHABET FOR HIGHWAY SIGNS AND MARKINGS FOR R X R SYMBOLS DETAILS.

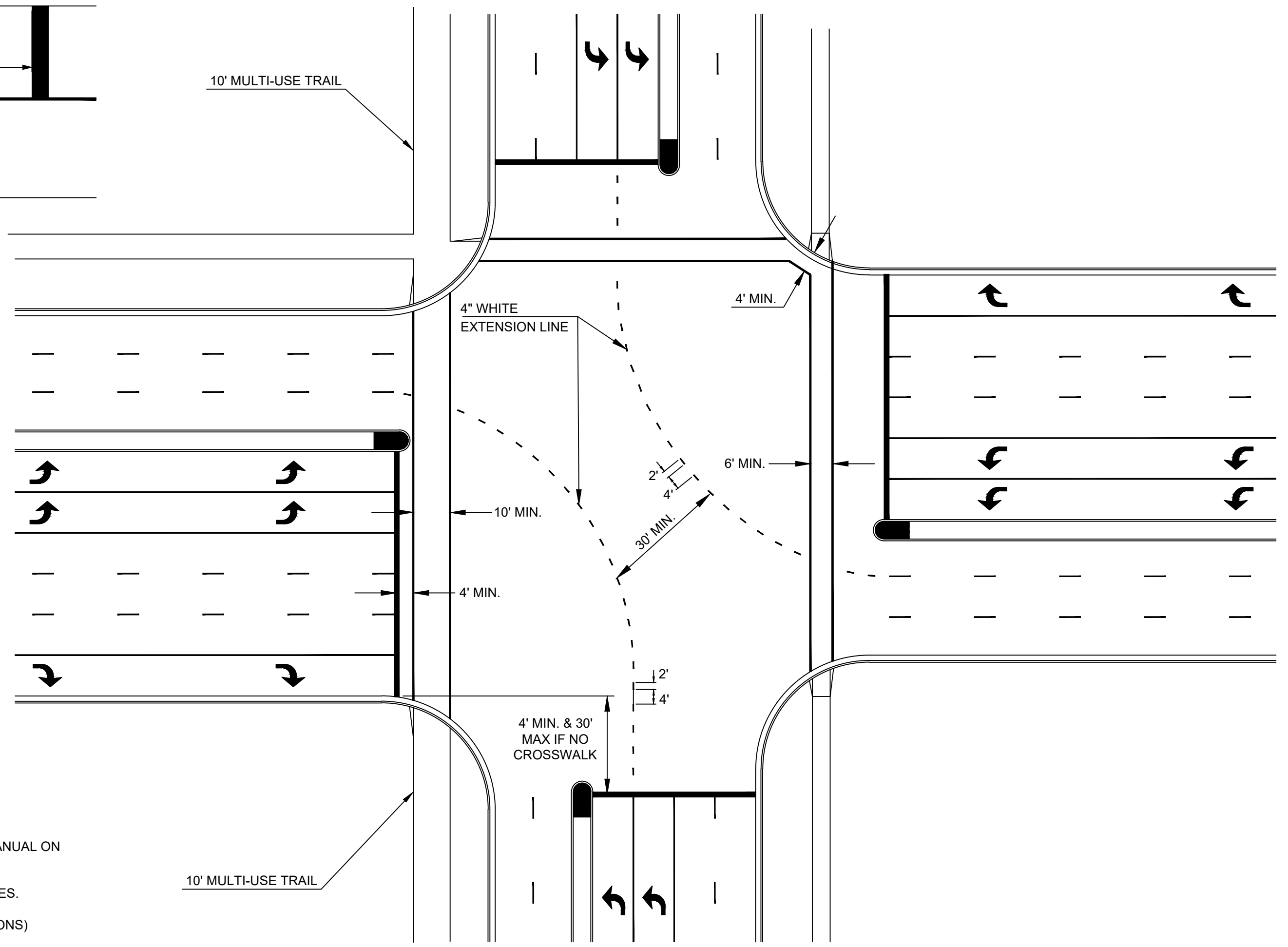
\* STOP LINE 8 FT. FROM NEAREST EDGE OF GATE OR CANTILEVER, IF PRESENT.

TYPICAL RAILROAD CROSSING DETAIL

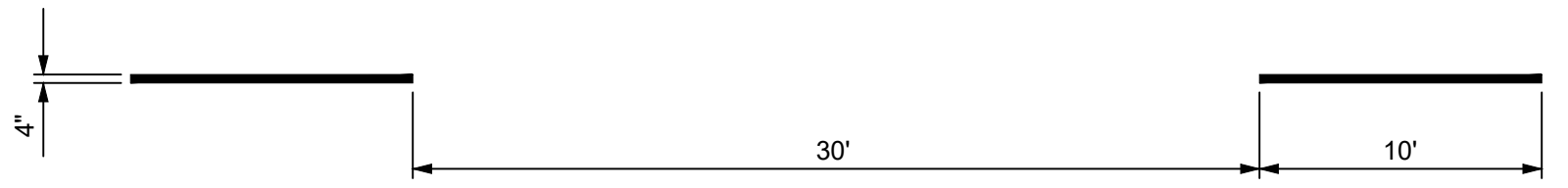
CHART A	
POSTED SPEED (MPH)	DISTANCE D (FEET)
65	850
55	700
50	625
45	550
40	475
35	400
30	325
25	250
20	175

NOTE:  
ALL DISTANCES ARE MINIMUM.

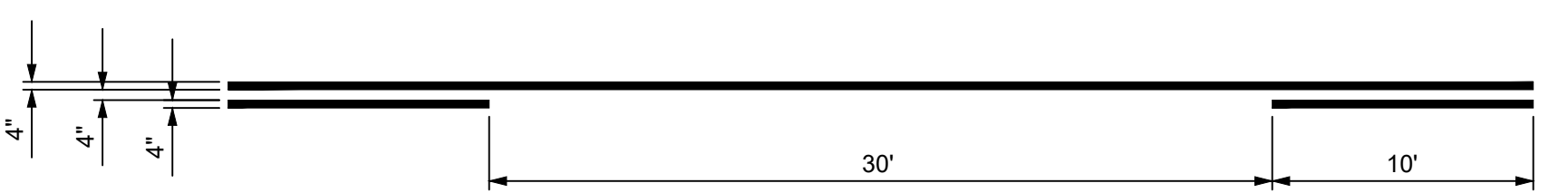
- NOTES:
- ALL PAVEMENT MARKINGS SHALL BE IN ACCORDANCE WITH THE LATEST EDITION OF THE MANUAL ON UNIFORM TRAFFIC CONTROL DEVICES (MUTCD).
  - ALL TURN ARROWS AND LEGENDS SHALL BE CENTERED IN THEIR RESPECTIVE TRAFFIC LANES.
  - ON CONCRETE PAVEMENT, ALL MARKINGS SHALL BE MULTI-COMPONENT. (SEE SPECIFICATIONS)
  - PAVEMENT MARKINGS, EITHER TEMPORARY OR PERMANENT, ARE REQUIRED AT ALL TIMES IF THE ROADWAY IS OPEN TO TRAFFIC. (SEE SPECIFICATIONS)
  - ALL MARKINGS THAT CONFLICT WITH THE DESIRED MARKINGS SHALL BE COMPLETELY REMOVED. (SEE SPECIFICATIONS)



TYPICAL CROSSWALK AND LEFT TURN  
EXTENSION LINE MARKINGS



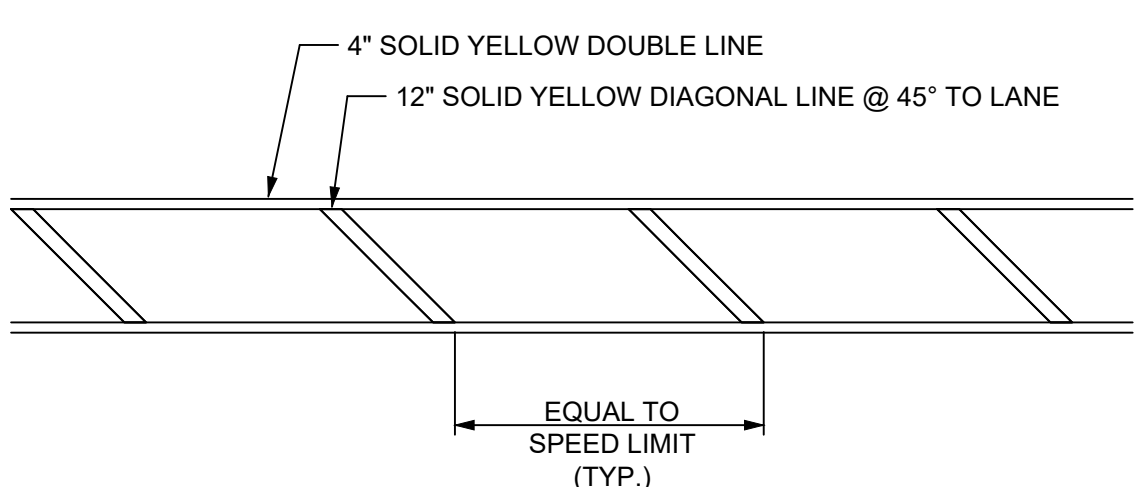
TYPICAL 4" BROKEN LINE DETAIL



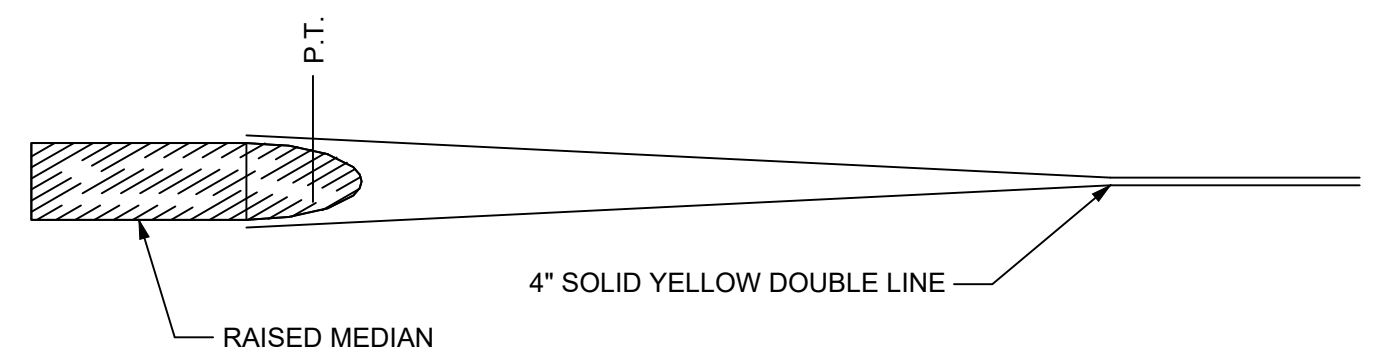
TYPICAL COMBINATION 4" SOLID AND BROKEN LINE DETAIL



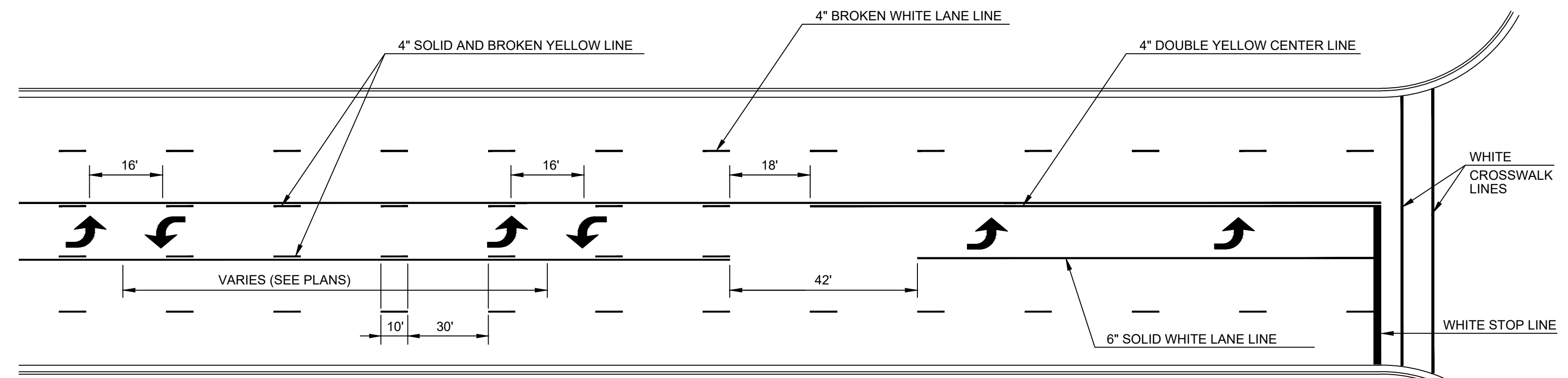
TYPICAL 4" SOLID YELLOW DOUBLE LINE DETAIL



TYPICAL 18" SOLID YELLOW DIAGONAL LINE DETAIL



TYPICAL MEDIAN NOSE CENTERLINE TREATMENT



TYPICAL TWO-WAY LEFT TURN MARKINGS

www.lenexa.com 2017

REVISED DATE:	08/17
DETAILED:	BKC
APPROVED:	---

**Lenexa**  
KANSAS

PAVEMENT MARKING DETAILS

SHEET D-900