



# SAR-KO-PAR TRAILS PARK MASTER PLAN

*Lenexa, Kansas  
2013*



# **Sar-Ko-Par Trails Park Master Plan 2013**

**Lenexa, Kansas**

## **CREDITS**

### **City of Lenexa**

**Michael Boehm, Mayor**  
**Joe Karlin, Council Member**  
**Steve Lemons, Council Member**  
**Diane Linver, Council Member**  
**Thomas R. Nolte, Council Member**  
**Lou Serrone, Council Member**  
**Amy K. Slater, Council Member**  
**Mandy Stuke, Council Member**  
**Andy Huckaba, Council Member**

**Craig Denny, Park Board**  
**Gregory Mischlich, Park Board**  
**Kristin Cooper, Park Board**  
**Nancy Klunder, Park Board**  
**Kelly Tines, Park Board**  
**Patrick Thomas, Park Board**  
**Mike Rzeszut, Park Board**  
**Gary Ewing, Park Board**  
**Anne Wagoner, Park Board**

**Eric Wade, City Administration**

### **Lenexa Parks and Recreation Department**

**Gary Ristow, CPRP, Director**  
**Logan Wagler, Asst. Director / Project Manager**

*Report prepared by*  
*Doug Pickert, RLA, ASLA*  
**Indigo Design, Inc.**

## **Table of Contents**

Section	Page
1 Master Plan Summary	1
2 Preliminary Program <ul style="list-style-type: none"><li>▪ Preliminary Program of Improvements</li></ul>	5
3 Parks and Recreation Master Plan Overview <ul style="list-style-type: none"><li>▪ Existing Features</li><li>▪ Final Park Master Plan with Legend</li><li>▪ Park Area Details</li></ul>	9
4 Trails System Summary <ul style="list-style-type: none"><li>▪ Trail System Plan</li></ul>	16
5 Opinion of Probable Project Costs and Phasing <ul style="list-style-type: none"><li>▪ Probable Costs Summary</li><li>▪ Possible Phasing Areas</li></ul>	18
6 Appendix <ul style="list-style-type: none"><li>▪ Open House Comment Form</li><li>▪ Open House Comments Summary</li><li>▪ In-Park Survey Comments summary</li><li>▪ Lenexa Historical Society Comments Summary</li><li>▪ Skate Park Advocates Comment Summary</li><li>▪ E-mail Comments Summary</li></ul>	21

Make no little plans; they have no magic to stir men's blood and  
probably themselves will not be realized.

Make big plans, aim high in hope and work, remembering that a  
noble, logical diagram once recorded will not die...

Daniel Burnham  
Architect and Urban Planner

...We are charged with the duty of developing a plan that shall  
not only meet present, but future wants...  
to undertake important work in a half-hearted manner  
is the poorest economy...  
it is far better to plan comprehensively and broadly  
and proceed with actual construction leisurely  
than to attempt economy in the original plans.

George Kessler  
Landscape Architect and City Planner

### **Project Initiation and Process Overview**

In 2012, City of Lenexa staff recognized the need for a comprehensive plan for Sar-Ko-Par Trails Park – the first ever such plan – given the aging infrastructure in various components of the park and certain already-anticipated improvements. There was an expressed desire that any future improvements be well-coordinated, efficient, and maintain or add to the quality of the park over the long-term. The City of Lenexa then initiated the creation of a Parks and Recreation Master Plan in the spring of 2013 to guide the development, improvement, and maintenance of Sar-Ko-Par Trails Park (SKPT) over the next 10-20 years. It was understood and emphasized by all participants in this process that Lenexa citizens view this park as a central, prominent feature of the community and an important component of the quality of life in their city.

The City engaged Indigo Design, Inc. to assist in the planning process. Starting in early 2013, a series of public input sessions, as well as meetings with the Parks and Recreation Advisory Board, the Lenexa Historical Society, other user groups, and city staff were held to discuss needed improvements and desired enhancements at the park. To initiate the process, the surrounding neighborhoods and the community as a whole were invited to a public open house to provide their observations, desires, and other thoughts. Person-to-person in-park surveys were also conducted to assure input from patrons already engaged in the use of the park, understanding that they add day-to-day experiences and knowledge to the discussion.

Following these initial input sessions and other focus-group meetings (see Section 5 Appendix for detailed summaries), a Preliminary Program was developed (see Section 2 of this report). Using this Program as a guide, a variety of initial options were developed and reviewed with City staff and the Parks and Recreation Advisory Board. Advantages and disadvantages of each initial option were discussed, and from this review, a preliminary final plan was developed. Following review and discussion of this plan, a Final Master Plan was created and presented to the City Council.

The Final Master Plan addresses both short and long-term needs and desired features of the park, thus providing a guide for future improvements as budget and resources become available. It should be noted that the elements of this plan will require on-going discussion regarding priority setting and an annual review of viability by the City.

### **Final Master Plan Overview**

The initial, basic goals of the project were to address short and long-term park needs, unify the east and west sections of the park by addressing the future of the central Rose House area, identify the highest and best uses for all areas of the park, activate under-utilized portions of the park, improve existing features and access, and lessen maintenance needs where possible.

During the course of the Master Plan development, several elements became the framework for the many specific recommendations that are included in the plan. A summary of the most prominent elements of the plan are outlined below. Additional discussion and detail regarding these elements can be found in the various sections of the full Master Plan report.

### **Rose Pavilion Area**

Proposed changes include demolition of the Rose House and development of this area as a prominent central feature within the park, visible from both the east and west. The addition of a large pavilion, seating 200+/- and overlooking the pond and new dam, will be the focal point. The pavilion will be complimented by a large, special use gazebo, development of an expanded destination playground area, increased parking, restroom replacement, new trails and expansion of the nearby Community Gardens.

The addition of a small shade structure will complement the sand volleyball courts and Community Garden. Also, the 125<sup>th</sup> Anniversary shelter will be removed to incorporate this space into the large pavilion. Relocation of storage for historic elements (now in the 125<sup>th</sup> Shelter) will be directed at improvements related to Legler Barn (see discussion on the following pages regarding north/west of Rose's Pond and Legler Barn).

These new centrally-located features will be served by a new one-way exit to 87<sup>th</sup> Street, using an improved drive that currently serves the maintenance facility. Lastly, the existing maintenance shed located along the north edge of the existing parking lot could be relocated or rebuilt in another area of the park to allow for additional parking in the central part of the park.

### **North Central Slope and Creek**

Two new, primary trail options will be added to this area near 87<sup>th</sup> Street and encompassing the east-west creek corridor. The lower trail alignment will connect to the 87<sup>th</sup> Street sidewalk, the Skate Park area, and the east park entrance. The upper trail will connect to the Sunflower/Meadowlark Shelters and playground, a new north restroom, and continue on toward the basketball court and eastern sections of the park, including the Aquatic Center.

At various locations along both of these trail alignments, small seating / photography areas will be created. There will also be landscape enhancements to this north slope area, including small, ornamental/understory trees and small beds flowering shrubs around the seating area. These ornamental plants will also beautify the view of the park from 87<sup>th</sup> Street.

A new restroom is shown between the Sunflower and Meadowlark Shelters, which replaces the existing north restroom farther to the east. This new restroom location will better serve these popular shelters and the recently up-graded playground. The existing north shelter and restrooms will be removed and replaced with a casual picnic area, incorporating a variety of smaller picnic table pads.

### **Skate Park Area**

The skate park will be shifted to the east, re-built, and expanded with new features to accommodate the steady, often heavy, use of the skate park. The improvements and new features, based on an expressed preference from the current skate park users, are to be geared toward a "street"-type facility. This shift will also allow for an expansion of the parking area to better serve the skate park, nearby open space, tennis courts, and as a convenient trailhead. There is also a new restroom and limited lighting proposed for this area.

**Southeast Corner of the Park (east of the Aquatic Center)**

A short, 9-hole disc golf course is proposed, in part to “activate” this visually-appealing, yet under-utilized, portion of the park and thereby increase casual use and surveillance. This disc-golf course will be designed to best accommodate families and youth. There will be a fence installed along the east side of the existing basketball court to help contain balls. Also, minor trail modifications will help improve flow and access.

**Indian Trails Aquatic Center**

Connection of the upper and lower parking lots, along with a new turnaround / drop-off near the pool entry gate, will improve access to the pool. Increased shade, more play value and features for all ages, and additional deck space were identified as possible enhancements to the pool. A more detailed study and more specialized process will determine the future improvements to the pool area. Also, the north portion of the pool has been identified as needing to be rebuilt in the not-too-distant future, due to its age and condition.

**North/West of Rose’s Pond and Legler Barn**

Two new trail sections, west of Rose’s Pond, will provide better access to the Legler Barn area and associated train station, caboose, etc., as well provide trail loop options in the pond area. Ornamental trees, planted in an “orchard” pattern, will create a farm-like setting for the red barn and frame the pond’s new spillway as viewed from 87<sup>th</sup> Street. Just northeast of the red barn is shown a new park monument sign and a pedestrian entry plaza with way finding and signage. This is one of two new park monument signs, the other located at the east (Greenway Lane) park entrance.

The Lenexa Historical Society has identified a desired expansion of Legler Barn to increase the museum’s capacity and enhance its display capabilities. One major component of this expansion could be additional display space attached to the lower level, east of the barn. Improvements to the Legler Barn complex will be funded by the Lenexa Historical Society.

**Trails System Overview**

Daily walking use is very notable in this park and was, thus, addressed with a particular devotion to creating a well-planned system with variety and challenge options. The master plan includes trail system enhancements and adds to the existing trail system in the following ways:

**North-central portions of park**

Between the Rose’s Pond dam and the skate park, on the north-facing slopes of the park, two new trail alignments are added to allow the possibility of several lengthy walking loops around the entire park site. The “lower” alignment in this area employs a new pedestrian bridge over the creek that runs east-west in this portion of the park. These trail additions will greatly increase the variety of walking paths available to park patrons, and will help increase usage of the existing eastern sections of the trail system, as well.

**Existing trails in the southern and eastern sections of the park**

These trail segments are planned for improvements primarily regarding trail surface quality and, occasionally, width. At the south end of the Aquatic Center parking lot, a new trail bypass has been added that will allow walkers to avoid the long flight of stairs from the upper lot to the lower lot. The small trail loop around the skate park is removed to make room for a proposed expansion of the skate park and associated parking.

**Existing trails around Roses's Pond**

The trails around the pond edges are new concrete segments and no improvements are noted for this highly used loop. A new trail segment is proposed farther west of the pond that seeks to better connect the Legler Barn and other historical elements in the northwest corner of the park. Other maintenance-type improvements are included for other existing trail segments.

**Park Entries**

Five locations around the perimeter of the park, where main connections are made to outlying sidewalks and paths, have been proposed for small pedestrian entry plazas. These plaza will provide trail maps, other park information, and park rules.

**In Summary**

There are many worthy features and improvements included in this master plan, and achieving their implementation will indeed take a steady, phased approach. Yet, the quality of life expected by the residents of Lenexa, and the quality of experience desired by park patrons, will be the force behind taking those first steps and continuing on as conditions and opportunities allow. This park currently embodies an excellent inventory of existing features and site characteristics that can serve citizens well into the future. This plan has been developed with the hope of capturing the best of the existing park elements, while protecting and expanding the park's appeal in the years ahead.



**The Program**

As the initial meetings and public input evolved, a program of desired improvements was generated to summarize the various elements to be explored in the master plan process. The following three pages summarize those program elements, which served as a basis for creation of the initial master plan options. As the initial plan options were reviewed and discussed, the incorporation of various program elements was adjusted, depending upon the feature's impact on the whole and the relative ability to enhance the overall plan.

## **SAR-KO-PAR TRAILS PARK MASTER PLAN**

### **Preliminary Program of Improvements (Revised)**

**July 9, 2013**

#### Trails

- Add more loops and connections throughout park, especially though north section of park, along creek.
- Widen/re-do trails in certain areas
- Add distance signs
- More drinking fountains with dog bowls
- Enhance seasonal lighting program
- Light the Rose's Pond Trail

#### Shelters

- Consider various configurations for a new, large shelter at the Rose house area, including something similar to Oak Shelter at BHP, a collection of smaller shelters and ...
- Make use of stone wall around 125<sup>th</sup> shelter, assuming shelter is removed to open up views of dam from new shelter at Rose House area.

#### Restrooms

- Update all
- Add changing tables

#### Playgrounds

- Relocate or update south playground. – Make more appropriate for toddlers.
- More features for toddlers throughout all playgrounds
- Add treehouse, play area like BHP
- Improve drainage through south playground
- Add big hillside slides
- Add swings throughout
- Rock climbing wall for teens
- Add shade at Sunflower shelter area (like at Electric Park)
- Add “Destination” features

#### Parking

- Parking -- someone suggested opening both sides of the pool parking lot, so visitors to the pool would not be required to drive through the neighborhood to park at the lower level of the pool
- Provide adequate parking throughout park at appropriate areas

#### Indian Trails Aquatic Center

- Remove sand area; Add splash pad for toddlers (off to side).
- More shade for deck areas, and larger deck areas. Consider shade over a portion of the water area, too.

- Expand concession area (seating).
- A/C or shade over concessions building, at least.
- A/C for guard tower.
- Add features – lazy river, lily pads, slide for toddlers, speed slide (for teens and adults)
- Expand the overall area, move the fence lines out where possible.
- Consider bringing play equipment and shelter from south playground into pool area (explore ways to keep available for year-round use).
- Provide 1M diving board
- Keep climbing wall

#### Rose's Pond/Dam

- More trash/recycling containers
- More drinking fountains with dog bowls

#### Legler Barn/Lenexa Historical Society

- Expansion of the Legler Barn to include display space and storage/display of the LHS Conestoga Wagon. Providing external viewing of the wagon from the park and additional indoor climate controlled display space. See attached plans.

#### General Features / Aesthetics

- Arboretum or Conservatory in the park – related to request for...
- Add understory, natural growth areas along 87<sup>th</sup> Street. Could be combined with background/ visual structure for photography area(s) – flowers, seasonal color, seating arrangement options. Would also provide a little screening of 87<sup>th</sup> from within park – Summary: look for balance of views in and out of park – define important views and capture them with new plantings. Also, plantings for wildlife, birds, butterflies, etc.
- Youth Disc Golf Course for families, 5-12 age
- Add “Orchards”/grape vines near red barn to enhance agriculture feel - could be community food source, tended by volunteer groups.
- Water feature that flows down hill into lake?

#### Skate Park

- Add lighting
- Re-surface/Replace
- Expand features – seems to be a general preference for “street plaza” features, as opposed to a large bowl. If bowl, consider a “snake-run” style.
- Revise certain high-risk elements, improve flow
- Add restrooms
- Add parking

#### Community Gardens

- Expand, perhaps to twice the current size.

#### Tennis Courts

- Ok as is, pending surface repairs

#### Basketball Court

- Relocate to a flatter site or add fence to contain balls

#### Sledding Hill

- Designate a Family-Sledding Hill (smaller hill)

#### Practice Fields

- Keep if possible, but not critical.

#### Sand Volleyball

- Replace sand, too coarse.

#### Entry Points/Signage

- Signage around Sar-Ko-Par Trails Park.
  - *Signs around the park could be placed to inform visitors when the Museum is open for visitors and tours.*
  - *There is limited signage around the park directing visitors to restroom facilities or park amenities*
- Outdoor nature program/signage; Interpretive Signage

#### Maintenance Building/Yard

- Expand yard area
- Consider relocation to less-central location

#### Festival Uses

- No current needs

The plans on the following pages are accompanied by general descriptions which highlight the most significant improvements relative to the entire park as well as various features within the master plan. The included plans are, in order:

- Existing Features – The current park features, based on a 2012 aerial photo.
- Final Master Plan – comprehensive plan of the entire park.
- Park Area Details – presented in the following order:
  - Rose Pavilion Area
  - North Central Slope and Creek
  - Skate Park Area
  - Southeast Corner
  - Indian Trails Aquatic Center
  - North/West of Rose’s Pond and Legler Barn

Additional information on the trail system can be found in the Trails System Summary section of this report, which immediately follows.

### **Final Master Plan Overview**

The initial goals of the project were to address short and long-term park needs, unify the east and west sections of the park by addressing the future of the central Rose House area, identify the highest and best uses for all areas of the park, activate under-utilized portions of the park, improve existing features and access, and lessen maintenance requirements where possible. The final master plan seeks to address these issues in a variety of ways, as illustrated on the following page.

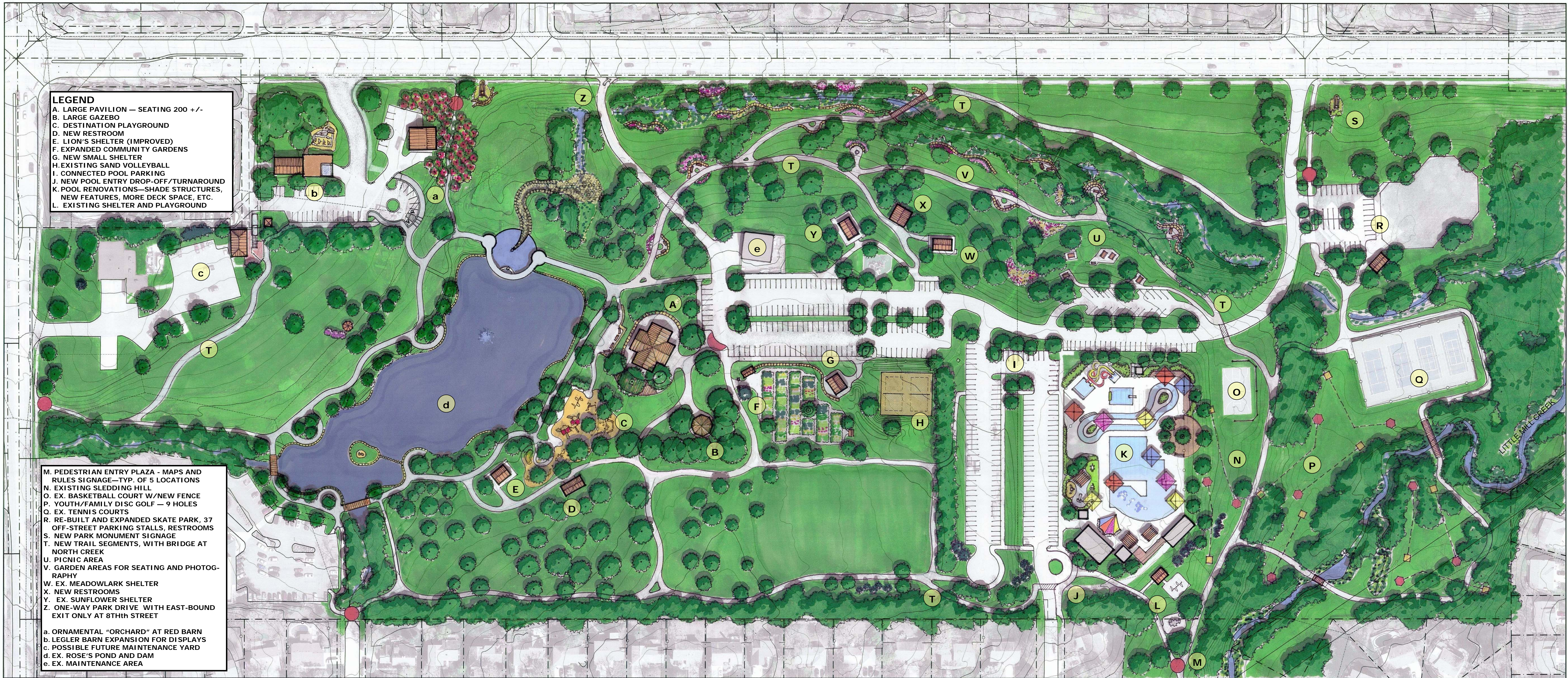
Please reference the Legend for identification of the various components of the master plan.



## SAR-KO-PAR TRAILS PARK—EXISTING FEATURES

- LEGEND**
- A. LARGE PAVILION — SEATING 200 +/-
  - B. LARGE GAZEBO
  - C. DESTINATION PLAYGROUND
  - D. NEW RESTROOM
  - E. LION'S SHELTER (IMPROVED)
  - F. EXPANDED COMMUNITY GARDENS
  - G. NEW SMALL SHELTER
  - H. EXISTING SAND VOLLEYBALL
  - I. CONNECTED POOL PARKING
  - J. NEW POOL ENTRY DROP-OFF/TURNAROUND
  - K. POOL RENOVATIONS—SHADE STRUCTURES, NEW FEATURES, MORE DECK SPACE, ETC.
  - L. EXISTING SHELTER AND PLAYGROUND

- M. PEDESTRIAN ENTRY PLAZA - MAPS AND RULES SIGNAGE—TYP. OF 5 LOCATIONS
  - N. EXISTING SLEDDING HILL
  - O. EX. BASKETBALL COURT W/NEW FENCE
  - P. YOUTH/FAMILY DISC GOLF — 9 HOLES
  - Q. EX. TENNIS COURTS
  - R. RE-BUILT AND EXPANDED SKATE PARK, 37 OFF-STREET PARKING STALLS, RESTROOMS
  - S. NEW PARK MONUMENT SIGNAGE
  - T. NEW TRAIL SEGMENTS, WITH BRIDGE AT NORTH CREEK
  - U. PICNIC AREA
  - V. GARDEN AREAS FOR SEATING AND PHOTOGRAPHY
  - W. EX. MEADOWLARK SHELTER
  - X. NEW RESTROOMS
  - Y. EX. SUNFLOWER SHELTER
  - Z. ONE-WAY PARK DRIVE WITH EAST-BOUND EXIT ONLY AT 8TH STREET
- a. ORNAMENTAL "ORCHARD" AT RED BARN
  - b. LEGLER BARN EXPANSION FOR DISPLAYS
  - c. POSSIBLE FUTURE MAINTENANCE YARD
  - d. EX. ROSE'S POND AND DAM
  - e. EX. MAINTENANCE AREA



# SAR-KO-PAR TRAILS PARK—MASTER PLAN

AUGUST 15, 2013

scale 1" = 60'

### **Rose Pavilion Area**

Proposed changes include demolition of the Rose House and development of this area as a prominent central feature within the park, visible from both the east and west. The addition of a large pavilion, seating 200+/- and overlooking the pond and new dam, will be the focal point. The pavilion will be complimented by a large, special use gazebo, development of an expanded destination playground area, increased parking, restroom replacement, new trails and expansion of the nearby Community Gardens.

The addition of a small shade structure will complement the sand volleyball courts and Community Garden. Also, the 125<sup>th</sup> Anniversary shelter will be removed to incorporate this space into the large pavilion. Relocation of storage for historic elements (now in the 125<sup>th</sup> Shelter) will directed at improvements related to Legler Barn (see discussion on the following pages regarding north/west of Rose's Pond and Legler Barn).

These new centrally-located features will be served by a new one-way exit to 87<sup>th</sup> Street, using an improved drive that currently serves the maintenance facility. Lastly, the existing maintenance shed located along the north edge of the existing parking lot could be relocated or rebuilt in another area of the park to allow for additional parking in the central part of the park.





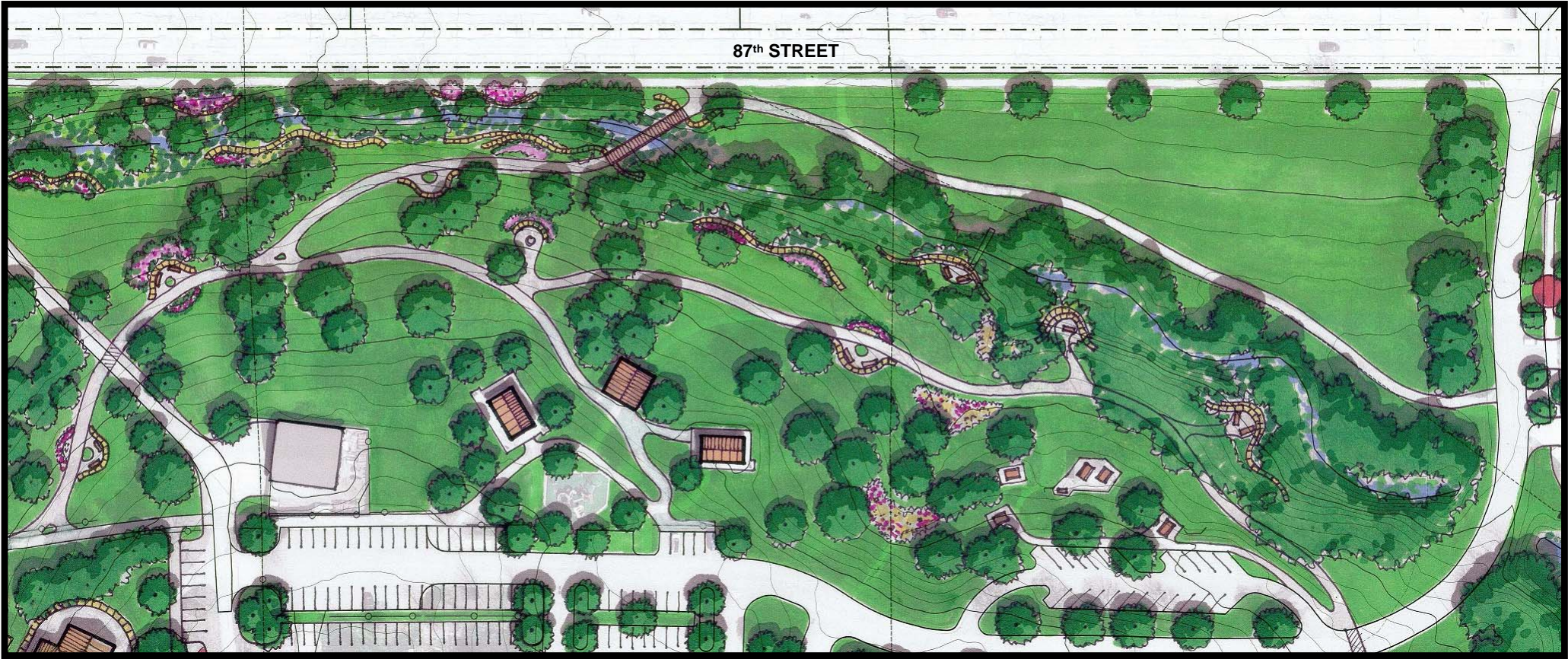
ROSE PAVILION AREA

**North Central Slope and Creek**

Two new, primary trail options will be added to this area near 87<sup>th</sup> Street and encompassing the east-west creek corridor. The lower trail alignment will connect to the 87<sup>th</sup> Street sidewalk, the Skate Park area, and the east park entrance. The upper trail will connect to the Sunflower/Meadowlark Shelters and playground, a new north restroom, and continue on toward the basketball court and eastern sections of the park, including the Aquatic Center.

At various locations along both of these trail alignments, small seating / photography areas will be created. There will also be landscape enhancements to this north slope area, including small, ornamental/understory trees and small beds flowering shrubs around the seating area. These ornamental plants will also beautify the view of the park from 87<sup>th</sup> Street.

A new restroom is shown between the Sunflower and Meadowlark Shelters, which replaces the existing north restroom farther to the east. This new restroom location will better serve these popular shelters and the recently up-graded playground. The existing north shelter and restrooms will be removed and replaced with a casual picnic area, incorporating a variety of smaller picnic table pads.



NORTH CENTRAL SLOPE & CREEK

### **Skate Park Area**

The skate park will be shifted to the east, re-built, and expanded with new features to accommodate the steady, often heavy, use of the skate park. The improvements and new features, based on an expressed preference from the current skate park users, are to be geared toward a “street”-type facility. This shift will also allow for an expansion of the parking area to better serve the skate park, nearby open space, tennis courts, and as a convenient trailhead. A new restroom and limited lighting are also proposed as additions to this area.



SKATE PARK AREA

**Southeast Corner**

A short, 9-hole disc golf course is proposed, in part to “activate” this visually-appealing, yet under-utilized, portion of the park and thereby increase casual use and surveillance. This disc-golf course will be designed to best accommodate families and youth. There will be a fence installed along the east side of the existing basketball court to help contain balls. Also, minor trail modifications will help improve flow and access.

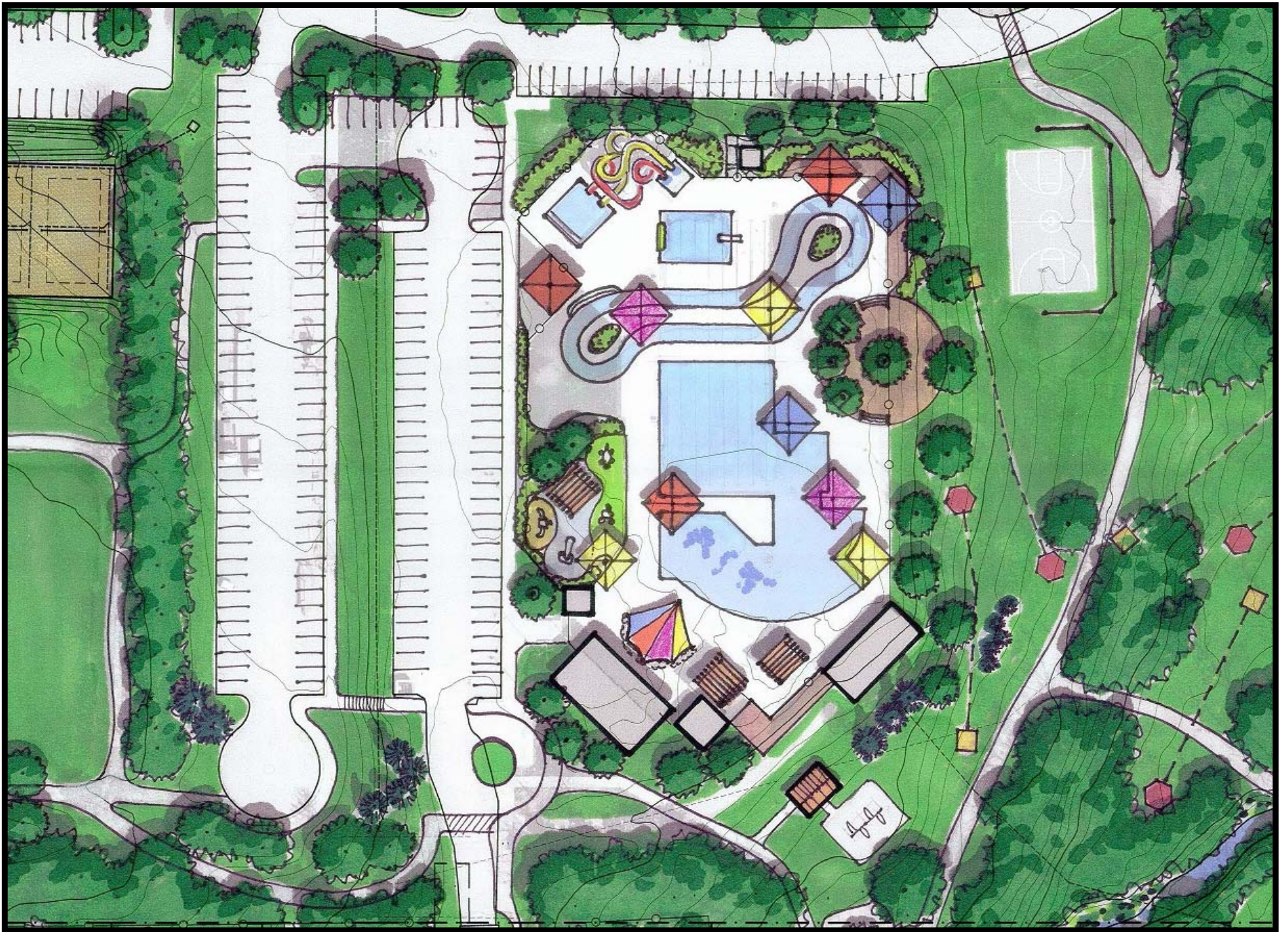


SOUTHEAST CORNER

**Indian Trails Aquatic Center**

Connection of the upper and lower parking lots, along with a new turnaround / drop-off near the pool entry gate, will improve access to the pool. Increased shade, more play value and features for all ages, and additional deck space were identified as possible enhancements to the pool. A more detailed study and more specialized process will determine the future improvements to the pool area. Also, the north portion of the pool will have to be rebuilt in the not-too-distant future, due to its age and condition.





INDIAN TRAILS AQUATIC CENTER

**North/West of Rose's Pond and Legler Barn**

Two new trail sections, west of Rose's Pond, will provide better access to the Legler Barn area and associated train station, caboose, etc., as well provide trail loop options in the pond area. Ornamental trees, planted in an "orchard" pattern, will create a farm-like setting for the red barn and frame the pond's new spillway as viewed from 87<sup>th</sup> Street. Just northeast of the red barn is shown a new park monument sign and a pedestrian entry plaza with way finding and signage. This is one of two new park monument signs, the other located at the east (Greenway Lane) park entrance.

The Lenexa Historical Society has identified a desired expansion of Legler Barn to increase the museum's capacity and enhance its display capabilities. One major component of this expansion could be additional display space attached to the lower level, east of the barn. Improvements to the Legler Barn complex will be funded by the Lenexa Historical Society.



NORTH/WEST OF ROSE'S POND AND LEGLER BARN

### **Trails System Overview**

The plan on the following page highlights the proposed park trail system. The trail system enhances and adds to the existing trail system, in the following ways:

#### **North-central portions of park**

Between the Rose's Pond dam and the skate park, on the north-facing slopes of the park, two new trail alignments are added to allow the possibility of several lengthy walking loops around the entire park site. The "lower" alignment in this area employs a new pedestrian bridge over the creek that runs east-west in this portion of the park. These trail additions will greatly increase the variety of walking paths available to park patrons, and will help increase usage of the existing eastern sections of the trail system, as well.

#### **Existing trails in the southern and eastern sections of the park**

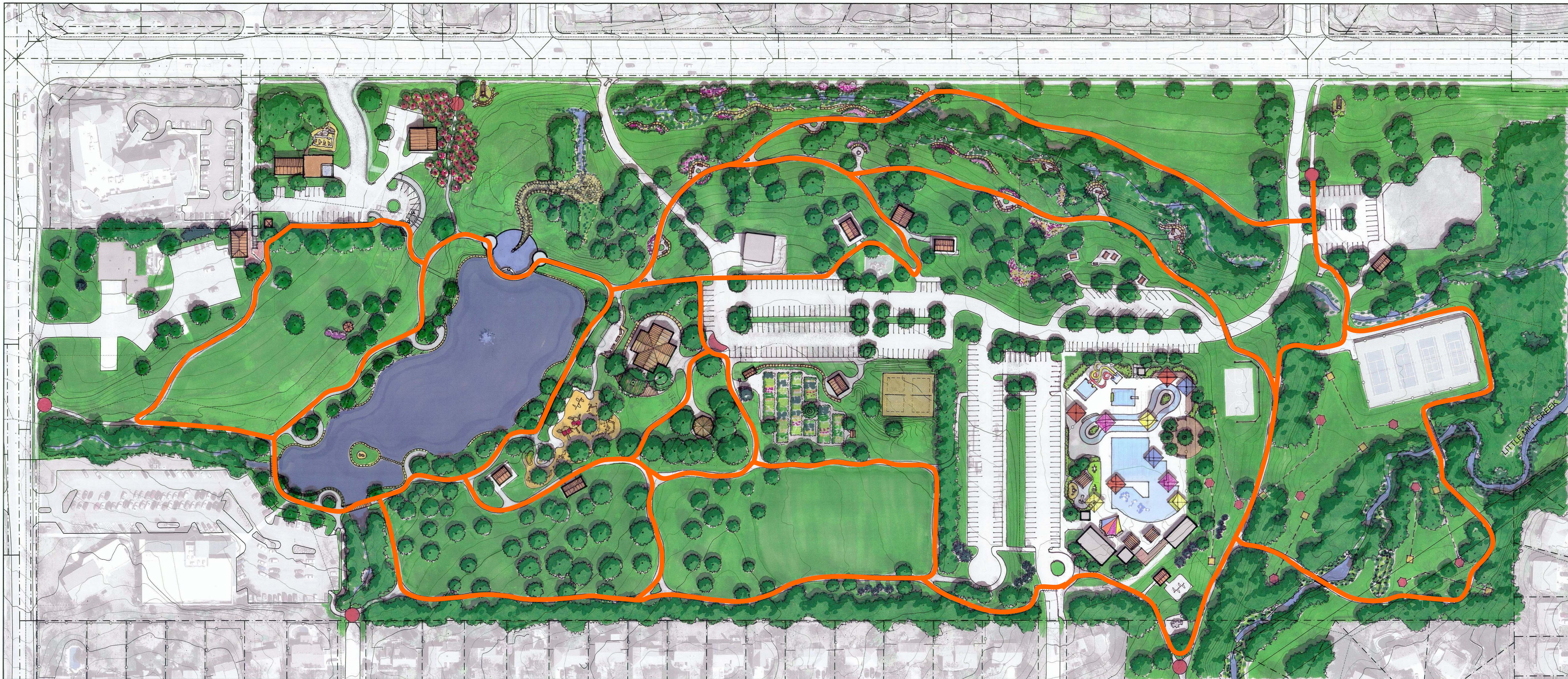
These trail segments are planned for improvements primarily regarding trail surface quality and, occasionally, width. At the south end of the Aquatic Center parking lot, a new trail bypass has been added that will allow walkers to avoid the long flight of stairs from the upper lot to the lower lot. The small trail loop around the skate park is removed to make room for a proposed expansion of the skate park and associated parking.

#### **Existing trails around Roses's Pond**

The trails around the pond edges are new concrete segments and no improvements are noted for this highly used loop. A new trail segment is proposed farther west of the pond that seeks to better connect the Legler Barn and other historical elements in the northwest corner of the park. Other maintenance-type improvements are included for other existing trail segments.

#### **Park Entries**

Five locations around the perimeter of the park, where main connections are made to outlying sidewalks and paths, have been proposed for small pedestrian entry plazas. These plazas will provide trail maps, other park information, and park rules.



**SAR-KO-PAR TRAILS PARK—MASTER PLAN**  
**Walking Trail System**

---

## **Opinion of Probable Project Costs and Phasing**

### **Opinion of Probable Project Costs**

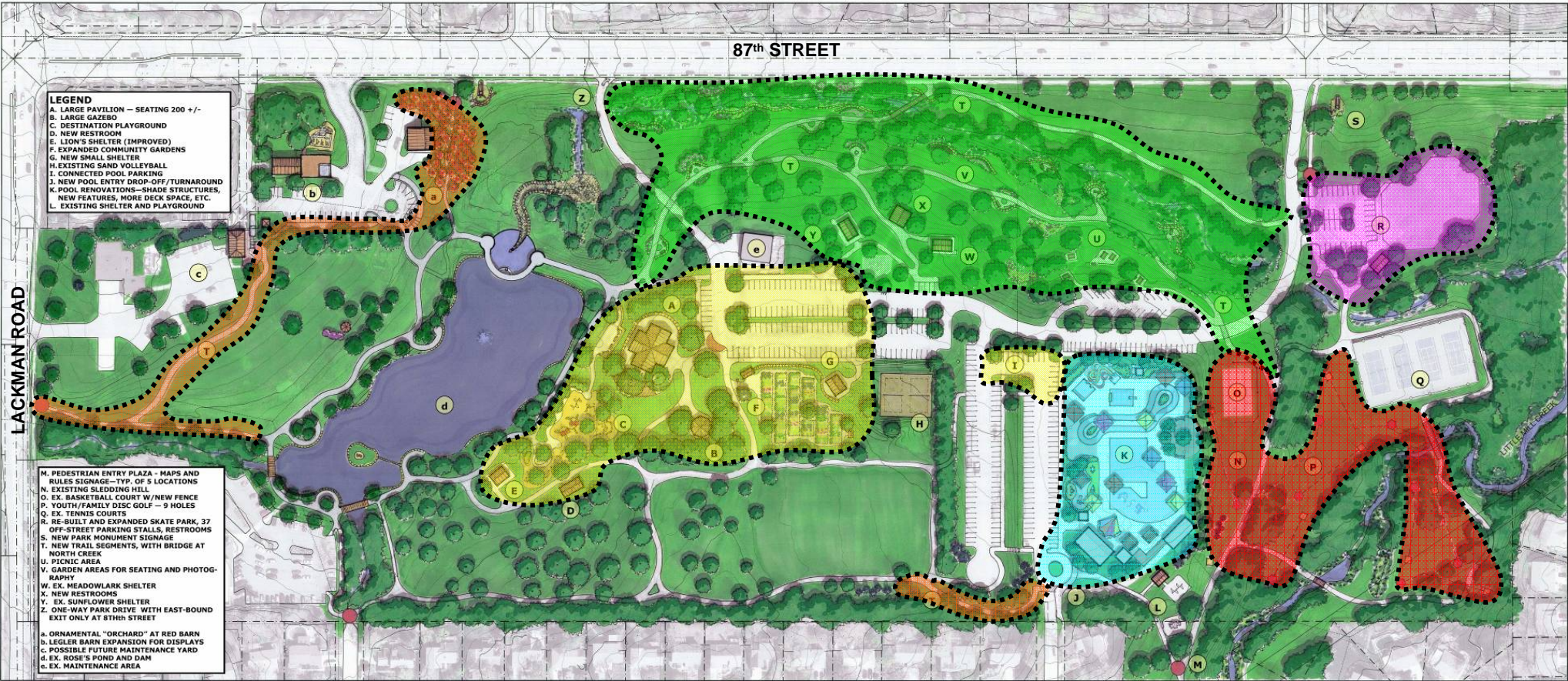
The following page is an overview of the projected costs for development of the full plan, as shown. It is important to note that implementation of the plan is likely to be accomplished in several phases over a number of years. The priorities for implementation will be revisited regularly, and adjusted, as needs and on-going budgetary decisions are made within the park system and for the City as a whole.

### **Possible Phasing Areas**

The diagram on the second page of this section delineates possible areas for phased implementation of the master plan. Completing each of these areas at one time would allow for efficiency in the coordination and staging of improvements, while minimizing impacts to previously completed phases.

<b>Sar-Ko-Par Trails Park - Master Plan</b>				
<b>Opinion of Probable Project Costs</b>				
8/20/2013				
Indigo Design, Inc.				
	<b>ITEM</b>	<b>LOW END</b>	<b>HIGH END</b>	<b>AVERAGE</b>
<b>AREA SUMMARIES</b>				
<b>ROSE PAVILION</b>				<b>\$1,312,500</b>
	LARGE PAVILION - SEATING 200+/-, PLUS PATIO AREA/DECKS, AND WALLS	\$420,000.00	\$520,000.00	\$470,000
	LARGE GAZEBO	\$60,000.00	\$100,000.00	\$80,000
	DESTINATION PLAYGROUND	\$210,000.00	\$280,000.00	\$245,000
	NEW RESTROOMS	\$220,000.00	\$260,000.00	\$240,000
	EXPANDED PARKING AREA	\$200,000.00	\$240,000.00	\$220,000
	COMMUNITY GARDEN RENOVATIONS	\$10,000.00	\$15,000.00	\$12,500
	NEW SMALL SHELTER (NEAR SAND VOLLEYBALL)	\$40,000.00	\$50,000.00	\$45,000
<b>INDIAN TRAILS AQUATIC CENTER</b>				<b>TBD</b>
	POSSIBLE IMPROVEMENTS INCLUDE NEW DROP-OFF/TURNAROUND FOR PARKING LOT, ADDITIONAL SHADE AND DECK SPACE, NEW WATER FEATURES, WATER TREATMENT UPGRADES, GUARD TOWER IMPROVEMENTS, CONCESSIONS A/C OR SHADE, ETC.	TBD	TBD	TBD
<b>SOUTHEAST CORNER</b>				<b>\$11,000</b>
	BASKETBALL COURT FENCE	\$4,000.00	\$6,000.00	\$5,000
	YOUTH/FAMILY DISC GOLF COURSE	\$5,000.00	\$7,000.00	\$6,000
<b>SKATE PARK</b>				<b>\$945,000</b>
	RE-BUILT AND EXPANDED SKATE PARK	\$650,000.00	\$820,000.00	\$735,000
	NEW RESTROOMS	\$140,000.00	\$160,000.00	\$150,000
	NEW PARKING AREA	\$55,000.00	\$65,000.00	\$60,000
<b>TRAIL SYSTEM DEVELOPMENT (4,800 LF OF NEW TRAIL)</b>				<b>\$275,000</b>
	87th STREET CORRIDOR - HIGH AND LOW SEGMENTS ON NORTH SLOPE	\$180,000.00	\$220,000.00	\$200,000
	ROSE PAVILION AREA ADDITIONS	\$35,000.00	\$45,000.00	\$40,000
	WEST AREA LOOP ADDITION	\$30,000.00	\$40,000.00	\$35,000
<b>NORTH CENTRAL SLOPE &amp; CREEK</b>				<b>\$345,000</b>
	NEW RESTROOM	\$200,000.00	\$240,000.00	\$220,000
	PICNIC AREA DEVELOPMENT (INCLUDING REMOVAL OF EX. STRUCTURES)	\$20,000.00	\$30,000.00	\$25,000
	GARDEN SEATING / PHOTOGRAPHY AREAS - INCLUDES	\$80,000.00	\$120,000.00	\$100,000
	CREEK CORRIDOR LANDSCAPE ENHANCEMENTS			
<b>NEW PARK DRIVE (EXIT ONLY)</b>				<b>\$55,000</b>
	FROM ROSE PAVILION TO 87th STREET	\$50,000.00	\$60,000.00	\$55,000
<b>OTHER PARK ENHANCEMENTS</b>				<b>\$190,000</b>
	PEDESTRIAN ENTRY PLAZAS - SEATING AREAS, INFORMATION AND MAPS	\$120,000.00	\$150,000.00	\$135,000
	PARKING LOTS CONNECTION	\$40,000.00	\$50,000.00	\$45,000
	ORNAMENTAL "ORCHARD" PLANTINGS AT RED BARN	\$8,000.00	\$12,000.00	\$10,000
	RELOCATION OF MAINTENANCE YARD AND BARN	TBD	TBD	TBD
<b>TOTAL PROBABLE PROJECT COST</b>		<b>\$2,777,000</b>	<b>\$3,490,000</b>	<b>\$3,133,500</b>

# POSSIBLE PHASING AREAS



# SAR-KO-PAR TRAILS PARK—MASTER PLAN

AUGUST 15, 2013



**Appendix Items – listed in order**

- Open House Comment Form
- Open House Comments Summary
- In-Park Survey Comments summary
- Lenexa Historical Society Comments Summary
- Skate Park Advocates Comment Summary
- E-mail Comments Summary

**Sar-Ko-Par Trails Park Master Plan**  
*City of Lenexa*

## Comment and Idea Form

*Open House Event - April 9, 2013*

Are there any general or specific issues or concerns for Sar-Ko-Par Trails Park that you would like to see addressed through the master planning process?

---

---

---

---

---

---

---

*(Please use back of form, if needed)*

Are there any recreation features or opportunities that you would like to see added to the park? Or, any that should be removed?

---

---

---

---

---

---

---

*(Please use back of form, if needed)*

Please rate the following existing features (5-Excellent to 1-Poor, NS-Not Sure)

Aquatic Center -	5 4 3 2 1 NS	Lake and Dam -	5 4 3 2 1 NS
Skate Park -	5 4 3 2 1 NS	Trails/Paths -	5 4 3 2 1 NS
Legler Barn -	5 4 3 2 1 NS	Shelters -	5 4 3 2 1 NS
Playgrounds -	5 4 3 2 1 NS	Open Space -	5 4 3 2 1 NS
Basketball Court -	5 4 3 2 1 NS	Tennis Courts -	5 4 3 2 1 NS
Community Garden -	5 4 3 2 1 NS	Festival Events -	5 4 3 2 1 NS
Sand Volleyball -	5 4 3 2 1 NS		
Safety -	5 4 3 2 1 NS	Maintenance -	5 4 3 2 1 NS

Any other thoughts related to the park plan that you would like to share with us?

---

---

---

---

**THANK YOU!**

*(Please use back of form, if needed)*

## **Sar-Ko-Par Trails Park Master Plan**

### **Public Open House Comments Summary Received April 9, 2013 at Lenexa Senior Center**

The following is a summary of the comments received at the Open House, both in filled out comment forms and from notes taken by the design team and City Staff assisting with various stations:

- Skate park improvements (many details noted – see Skate Park Advocates Summary in the Appendix)
- Designate a Family Sledding Area, in addition to existing sledding hill.
- Consider lighting the Rose’s Pond Trail
- Some discussion regarding a new, larger shelter in the Rose’s House area
- Need fence for basketball court
- Need shade on the playground near the Sunflower/Meadowlark Shelters
- There were several comments about how much people are enjoying the seasonal lighting around the dam/pond and the pond/trail improvements, in general.
- Do not turn off the railing lights on the dam or the lake aerator, or drain the pond.
- Add more walking trails.
- Regarding the Aquatics Center:
  - It is time for an update.
  - Remove sand and replace with new feature (splash pad, spray park) - everyone I spoke with liked the idea. One person even said that the public and parents would love it gone as well.
  - Add more shade structures to the deck area. One person threw out putting shade in the water/over the water itself.
  - Increase deck space to accommodate more chairs- people agreed that it is hard to find enough space on the deck to sit on a chair
  - Expand the concession area- (note: adding shade throughout the facility will help alleviate the congestion we currently see here)
  - Modify building structures to allow for a cooling mechanism, including the lifeguard tower for staff and public (in the event of an emergency)- most everyone could not believe there was no air conditioning on site (concessions and guard tower).
  - Adding a feature meant for pre-teens, teens and adults (i.e. speed slide, lazy river, lily pads, etc.). The spray park mentioned above would serve the younger ages.
  - Push the boundary lines out and make the interior larger. This would allow for more features, chairs and be able to handle a larger crowd.
  - Use the extra space on the outside of the fence on the west side to either re-locate the park play equipment and gazebo sitting behind the pool, or move the fence line to put those areas within the pool.

## Sar-Ko-Par Trails Park Master Plan

### In-Park Survey Comments Summary

Received April 28-29, 2013

at 125<sup>th</sup> Shelter Display

Comments received and notes prepared by Doug Pickert/Indigo Design

*Note: Each change in bullet style represents comments from a new person or family – Total of 34 separate conversations, plus 8-10 comments “in-passing”.*

- The park is awesome!
- Might look at providing more trash and recycling, specifically noted the NE corner of pond/dam
  
- Need merry-go-round in playground near Rose’s Pond
- Also, a see-saw or “spinner” would be good
- (comments from children – ages 9-10 +/-)
  
- Looks good so far!
  
- Renovations are awesome; Really like it!
  
- Put some natural undergrowth back.
- Quiet the pump for the aerator.
- Put more sidewalks on parking lot near barns to help people stay out of traffic and not walk on the grass, killing it. Can be slippery, too. Consider grass pavers to avoid adding a lot of hard surface/concrete.
- Add more Lenexa history, e.g. the spinach farms – could be near the community gardens.
  
- Would like paddleboats, if cost is reasonable.
  
- Really like recent improvements (person who knows Dorothy Rose)
  
- Need mileage on trails – how far around?
  
- Keep up maintenance efforts – doing well!
- Re-do sand in sand volleyball courts – too coarse to be enjoyable. The courts would be used more with better sand.
- Would like to see more screening of 87<sup>th</sup> Street from within the park.
- Find ways to invite people into the un-used parts of the park.
- Know it’s a big deal to accomplish, but a trail underpass under 87<sup>th</sup> Street at NE corner of park (by stream culvert) would be very helpful.
  
- Love it!

- Need area for photos – with flowers in most seasons, color, backgrounds, etc.
- BBQ Contest issues (from family living north of park on Alden St.):
  - Need better management of parking.
  - Clean up better, with considerations for environmental issues (re-cycle)
- Miss the trees along 87<sup>th</sup> Street
- New lake and dam is wonderful.
- Need off-leash dog park.
- Like the new improvements.
- Need indoor/outdoor wedding venue – would get used a lot.
- Add a merry-go-round and see-saw (from young girls, ages 6-7)
- Looks great!
- Need railing on new bridges/boardwalks at south end of lake.
- Add a large shelter that could hold 100-200 people for large parties.
- Skate park is good.
- Pool is important, keep it up.
- Would like native plantings for wildlife – attract monarchs, birds, etc.
- Greenhouse with butterfly display.
- Locomotive with train station display! (knows that would be hard to get)
- Add trees along church parking lot to improve views at that part of park.
- Need better restrooms with changing tables
- Like that park feels safe! Keep it that way.
- Improvements look great.
- Fix dog drinking bowl @ west dam entry point.
- Add more drinking fountains with dog bowls.
- Tennis courts need fixing, but not with same surface – courts are “dead” (2<sup>nd</sup> time this was mentioned by someone, but was not recorded the first time)
- Drainage through south playground need re-working.
- Would like to see more play features for youngest ones (toddlers). Structures at pond and Sunflower Shelter are geared toward 5-12 age group. South playground is better for toddlers.

- Improve trails in east section of park – e.g., need trail from basketball court over to north shelter/restrooms.
- Can we get canoes or kayaks on the pond?
- Need restrooms near the skate park.
- Get cleaner water in little pond below the dam.
- Add more benches around the lake.
- Re-surface trail in the south part of the park.
- Improve drainage through the south playground area – pipe doesn't work.
- Issues with drainage near trail at Lackman entry point.
- Need softer sand for volleyball courts.
- Need better trash cans, fix the broken ones.
- Always be thinking SAFETY for street crossings, etc.!
- Need bubbler in basin below the dam; get rid of algae.
- Lake improvements are good.
- Wouldn't mind seeing paddle boats.
- Like to see high dive back in pool.
- Build water feature/stream that flows back into pond (from hillside toward the Rose house).
- More water slides (idea by small boy).
- Would like to see a playground like Black Hoof Park.
- Big hillside slide, like Omaha has with two metal, side-by-side slides.
- Treehouse (idea by small boy).
- Need covered area for weddings and receptions.
- Love the improvements!
- Really like the new improvements.
- Add small petting farm – like Deanna rose before they got so big! Thinks this part of the county would use it.
- Anything for the kids is great! (Grandfather's comment)
- More trash cans, especially for dog walkers. They are too far apart now.
- Tennis courts are dead, hate them (3<sup>rd</sup> time mentioned). Thinks the surfacing product is poor, eve when properly installed.
- (By the way, add lights to Bois d' Arc park tennis courts).
- Stagnant water in basin is a problem.
- Would like to see a small amphitheater around the lake somewhere.
- Things look good/Really like what's been done. (General comment from 8-10 people who didn't want to stop walking).

## **Lenexa Historical Society Meeting and Follow-up from LHS Board President Received May, 2013**

Thank you for meeting with the Lenexa Historical Society Board on May 6 to discuss ideas for the Sar-Ko-Par Trails Park master plan.

As promised, here is a recap of some of our thoughts and ideas discussed at that meeting, and some additional thoughts from our membership, along with an attachment detailing the plans for expansion of the space immediately behind the Legler Barn to include permanent storage for the Conestoga "Prairie Schooner" Wagon and additional display space.

Ideas for inclusion in master plan of Sar-Ko-Par Trails Park:

- Expansion of the Legler Barn to include display space and storage/display of the LHS Conestoga Wagon. Providing external viewing of the wagon from the park and additional indoor climate controlled display space. See attached plans.
- Renovation of the Red Barn to include indoor display space and multi-purpose meeting space (possibly with climate control).
- Razing of the existing Rose house and replacement with a large pavilion / special event space. This space might also be designed with some weather protection, or even an enclosed/climate controlled space, with removable side walls/panels opening to the outdoors.
  - Planned uses of such a facility should target weddings, receptions, family reunions, graduation parties, convention space, business meeting space, youth groups (scout, school, etc.), farmer's markets, church services, recreation (dances, festivals, BBQ judging, etc.), birthday parties, exercise/fitness classes, etc.
  - This might be similar to the Oak Shelter at Black Hoof Park or Old Shawnee Town Hall (but much larger).
  - This might also include an attached outdoor gazebo (much larger than existing one) for the wedding ceremony, with the indoor pavilion space used for the reception.
  - Such a facility should include a commercial kitchen or similar capabilities for food storage (fridge/freezer) and some preparation space. Also necessary for weddings would be changing rooms, or other space for the wedding party.
- Signage around Sar-Ko-Par Trails Park.
  - Signs around the park could be placed to inform visitors when the Museum is open for visitors and tours.
  - There is limited signage around the park directing visitors to restroom facilities or park amenities.
- Walking track round lake (add distance signs) and exercise stations.
- Outdoor nature program/signage
- Parking -- someone suggested opening both sides of the pool parking lot, so visitors to the pool would not be required to drive through the neighborhood to park at the lower level of the pool.

- Outdoor Amphitheater - using the sloping grounds, build an outdoor theater (similar to the Theater in the Park at Shawnee Mission Park)
- Dock at the lake with paddle boats.
- Arboretum or Conservatory in the park.

Again, thank you for including the Lenexa Historical Society in your planning process, and please feel free to contact us if you should have any additional needs or questions.

Regards,  
Todd Crow, President  
Lenexa Historical Society



**Skate Park Advocates – Comments Summary  
Received at the Public Open House (April 9, 2013) and  
Follow-up Meeting with a representative group (May 6, 2013)**

Ideas for inclusion in master plan for the Skate Park:

- Texture is rough
  - Concrete finish is pitted and needs re-surfacing.
- Need more parking (15-20)
- Specific issues:
  - ¼ pipes - better edges, coping
  - Pyramid hip – need another feature on far side from other ramp
  - Low rail could be somewhere else
  - Composite materials are nice
  - Transition into mini-ramps is too sharp.
  - Central feature – ledge hits
  - Sea Ledge – too tall (front row)
  - South ledge is perfect (but needs end)
  - 4' bowl – need more height, steeper too
  - 3' spine is good
  - Grind rail/flat bar – too wide – need circle rail (4" diam.)
    - High end all the way across, like Grandview Skate Park
  - Banked ramp – could be steeper
  - Approach to steps is too short
  - Inclines on rails and hubbas (on steps) are too steep
- New features to add:
  - Restrooms
  - Big Bowl – look @ Swarner Park in Shawnee
  - Snake Run might be better o.k., too, might be better. – check out Venice Beach
  - Unique features
  - Keep it simple
  - Marble edges would be good.
  - Street Plaza would be unique – see Arvada, CO (best in country) Team Pain built it.
  - Grindline also a good company
  - Look at Roe Park – good example, but too compact.
  - Maybe add smaller steps to work up to larger set
  - Shade would be good
  - Add pole-ramp – not too flat or short
  - Add hubbas – front and backside

## **E-mail Comments Summary - Received throughout the design process**

*My friend gave me your email and said that the city was looking for input about changes to the park. My comment is about the pool. Please do not eliminate the sand area. For families (like ours) who have older and younger children, the sand area is essential to our ability to enjoy the pool together. Our younger children do not like to swim as long as our older children, so the sand pit is our go to when they are tired of swimming. I would be very disappointed to see the sand part of the pool taken out, and I know many other mothers would feel the same way.*

---

*Thanks for the postcard inviting review of the master plan for SKPT park. Upon review of the plan, it seems well-thought-out. Many of the improvements are long overdue, particularly replacing, relocating, and/or upgrading of restrooms, and adding the fence on the east side of the basketball courts.*

*We are regular users (walkers) on the park trails, so any trail upgrades/expansions would be appreciated.*

*Consider replacement of the mulberry trees that drop berries on the trails, making for purple stains on carpeting when returning home from a walk in the park each spring.*

*Also, since my wife is visually impaired and walks with a guide dog, your continued efforts to trim low hanging branches over the trails are very helpful.*

*Suggestions:*

*Install a better fence on the north side of the sand volleyball courts (to stop balls rolling into the parking lot and down the hill),*

*Install a drinking water fountain near the volleyball courts (that might also service the expanded garden area).*

*As you are aware, removal of the geese would be great, but we understand is impractical.*

---

*Logan, thanks again for your time, attention and response.*

*Thank you also for the reassuring comment "**Given the master plan, the intent is to replace it with something similar and in the same location as it sits today**" referring to the Lion's Shelter. It is joyful to see and hear people having fun and by no means am I sorry the shelter is there and serving it's purpose. In addition, it is really enjoyable to interact with the walkers on the trail, see the people fishing and hear the children at the playground. I've had occasions in my life when I've looked out over large lakes and oceans with nothing happening, day in and day out; there is really nothing very interesting about that ... just boring. A park with no activity would be the same thing.*

*Moving or increasing the size of the Lion's Shelter, blocking the view of the pond, or encouraging large masses of visitors to get there from wherever (including through my yard) will of course still be my concern; that is, until the shelters and restrooms are completed along with all of the other ideas and "improvements" to the park. However, I'll try to relax and trust the best judgments of you and the rest of those decision-makers at the Lenexa Parks and Recreation Department. At least you have not indicated plans to convert*

*the park into a full-time camp-ground like the weekend of the barbeque contest. 😊*

*Prior, related e-mail from same individual:*

*I'm impressed with your quick reply to my email letter of concerns regarding the Master Plan for Sar-Ko-Par Trails Park. I also appreciate the overall communication from the Parks and Recreation Department of Lenexa and the obvious consideration you have for the property owners, in that you spend valuable time and resources keeping us informed and somewhat reassured.*

*When I purchased my home adjoining the park four years ago, I had no idea the quiet little park with my great view of water and trees would be such a priority for Lenexa in making repeated renovations. I suppose I should be impressed with the vitality of the city and the desire to be constantly striving to improve it, including the park in my backyard. However, your decisions can have a very real impact on me and several other homeowners on 89th street, including our daily quality of life, security, and the value of our homes. The folks that come to enjoy the park along with their family and friends from all over the area should appreciate what the Lenexa community provides for them. As your reply-note to me indicates, that you (Lenexa Parks and Recreation) want to be good neighbors; I just hope the increasing number of visitors to the park feel the same way.*

*When I wrote to you that I was concerned about the "improvements" that were going to be made to the Lion's Shelter (E) per the Master Plan, I was merely hoping that increased or brighter lighting would not be a part of the "improvements." You reassured me that any new lighting systems would truly be an improvement with less light pollution. However, your first sentence of that paragraph now scares me. Instead of just improving the shelter as stated in the Master Plan, you commented that the shelter is slated for replacement in 2015. You went on to say that you don't know what it is going to look like. Well, I sure do care what it will look like, and I certainly worry about the size. The lighting is not now my biggest concern.*

*Every weekend and some week nights there is a trail of party participants coming to and from that shelter from the Christian Church's parking lot. A few creative minds decide that parking on 89th street and cutting through my yard is a nice shortcut. I don't agree. Consequently, over the last two years I have spent more than three thousand dollars on timer-controlled night lights on the front of my home, motion detectors with security lighting on the back and sides, and four quality/tasteful strategically placed "No Trespassing" signs. I have been advised that at least I have attempted to protect myself from liability if someone decides to fall down on my property when they are not supposed to be there in the first place. For my own security and personal property, I have added some additional security measures to my list of expenditures. The last thing I need is for the Lenexa Parks and Recreation Department to encourage more trespassers.*

*I realize the shelter and the park were there long before I arrived, and I had full knowledge of what to expect with having it there ... I thought. As I said above, I have enjoyed many wonderful mornings and quiet nights with really nice views to gaze upon the treed meadow and the pond. However, ever since the very first meeting held at the City Hall to view*

proposed "improvements" to 87th street, the pond and the park, it seems like there hasn't been much peace of mind.

Prior, related e-mail from same individual:

After reviewing the master plan for the Sar-Ko-Par Trails Park, I have just three concerns. Of course they are all selfishly in regard to the area that impacts my view, peaceful surroundings and the property value of my home and property at 14632 W 89th St. looking north into the park.

**1) Lion's Shelter Improvement.**

I am concerned with the vague comment that the "Lion's Shelter" (E) will be "improved." I hope that **does not** mean more or brighter lighting that is already the focus of my view into the park all night long every night of the year. I would like to know what it is specifically that is going to be improved. I've always wondered why the shelters have to be kept lit all night when nobody should be using them that time of the night anyway (10 or 11PM on for instance).

**2) New Restroom (D)**

The "New Restroom" (D) appears to now be planned on the south side of the walking trail which means I will get to look at the back of it. I trust that it will be an improvement for me and my neighbors and not just for the transient park visitors.

**3) Large Pavilion (A)**

Do we really need or want a new "Large Pavilion" (A) that will accommodate more than two hundred people? Is that not asking for trouble? Do we really need more shelter and pavilion space in the area that already has the Meadowlark (W) and Sunflower (Y) plus adding another small one (G) too? That is a lot of people partying in a very concentrated area. Walking in that area now has already caused me concern on weekends, witnessing several instances of issues between the multiple shelter participants. The playground in this area is a sticking point with competing kids and protective parents. The parking is already a problem with folks that have a different opinion as to who should park where. You are "expanding the community gardens"; now throwing hundreds of additional people going to multiple shelters and a "large pavilion" in the area, along with swimmers with families. Where are they all going to park? People working in their community gardens aren't going to love walking a great distance to maintenance their crops with tools and fertilizer, etc. Has anyone done the math as to how many parking spots are needed for all of this, (average occupants per car) attending shelter parties, gardening, swimming and enjoying a new "Picnic Area" (U) too? The new "Seating and Photography" area (V) might be just the place to sit, photograph and document the **chaos** that will take place in this area on any given weekend, that is if they can find a place to park to go to the new seating and photography area.

I'm concerned; I have to live close by, watch and listen to all of it, not like the consultants that come up with these great ideas and live elsewhere.

It was nice to meet you at the open house in Lenexa. Sorry this has taken so long to get composed. But, I did hold true to my word and shared your email with a few friends who use the park. With any luck they beat me to responding.

My family has discussed the park and feel to share the following ideas:

*Are there any general or specific issues or concerns for Sar-Ko-Par Trails Park that you would like to see addressed through the master planning process?*

- The park is a wonderful place to go and the options there are extensive: we feel the biggest need for renovation at Sar-Ko-Par Trails Park is the Aquatic Center. The features of the Shawnee pools are attractive and comparatively we feel short changed with Lenexa! We'd suggest adding some visual excitement to the pool and fun options for all ages: the Manhattan, KS City Pool was redesigned several years ago. We really like their lazy river (as do the grandparents). They had solid floating structures anchored to the bottom of the pools for climbing and sitting upon. The kids also enjoyed the rope monkey bars across the pool. The kiddie pool should have some type of slide. Diving boards! And of course lap swimming.
- The restrooms are dated.
- It never made sense to me why there are 3 playgrounds in this park. The small one on the south side of the pool is only viable to foot traffic. Is it necessary?
- The garden area is a great option for our friends who rent. It's interesting to walk by and see all the various things growing and inspires us to try new things at home. Hope you'll keep it.
- The practice fields are a hidden gem. Nice to have a flat open space that is so versatile.
- The gated parking lots on the west side of the pool are odd. I've never understood why it's that way.

*Are there any recreation features or opportunities that you would like to see added to the park? Or, any that should be removed?*

- We aren't fond of walking on the sand at the pool! But, sand is a wonderful play time activity. Would like to see it kept for creative play, but perhaps near the playground area on the north side of the pool or by the community garden. The sand area was taken out of Ad Astra with its redesign and there isn't one left that I'm aware of. The kids LOVE playing in sand.
- We don't spend any time with the skate park, but there are usually more people using it than the basketball/tennis courts in our observation.

*Please rate the following existing features (5-Excellent to 1-Poor, NS-Not Sure)*

Aquatic Center - 2

Skate Park - NS

Legler Barn - 4

Playgrounds - 4

Basketball Court - NS  
Community Garden - 4  
Sand Volleyball - NS  
Safety - NS  
Lake and Dam - 4  
Trails/Path - 4  
Shelters - NS  
Open Space - 5  
Tennis Courts - NS  
Festival Events - 4  
Maintenance - 5

*Any other thoughts related to the park plan that you would like to share with us?*

- The boys in our family have always loved the caboose! Though, let it be recorded they think it's unfair they can't go inside it.
- The dragon sculpture on the pond is a favorite, but I'm concerned about the safety of little kids walking the rocks out to it with no side rails or the gaps between the rocks. I'm certainly glad our kids are older now.

While we aren't aging yet, we like the addition of benches around the pond.