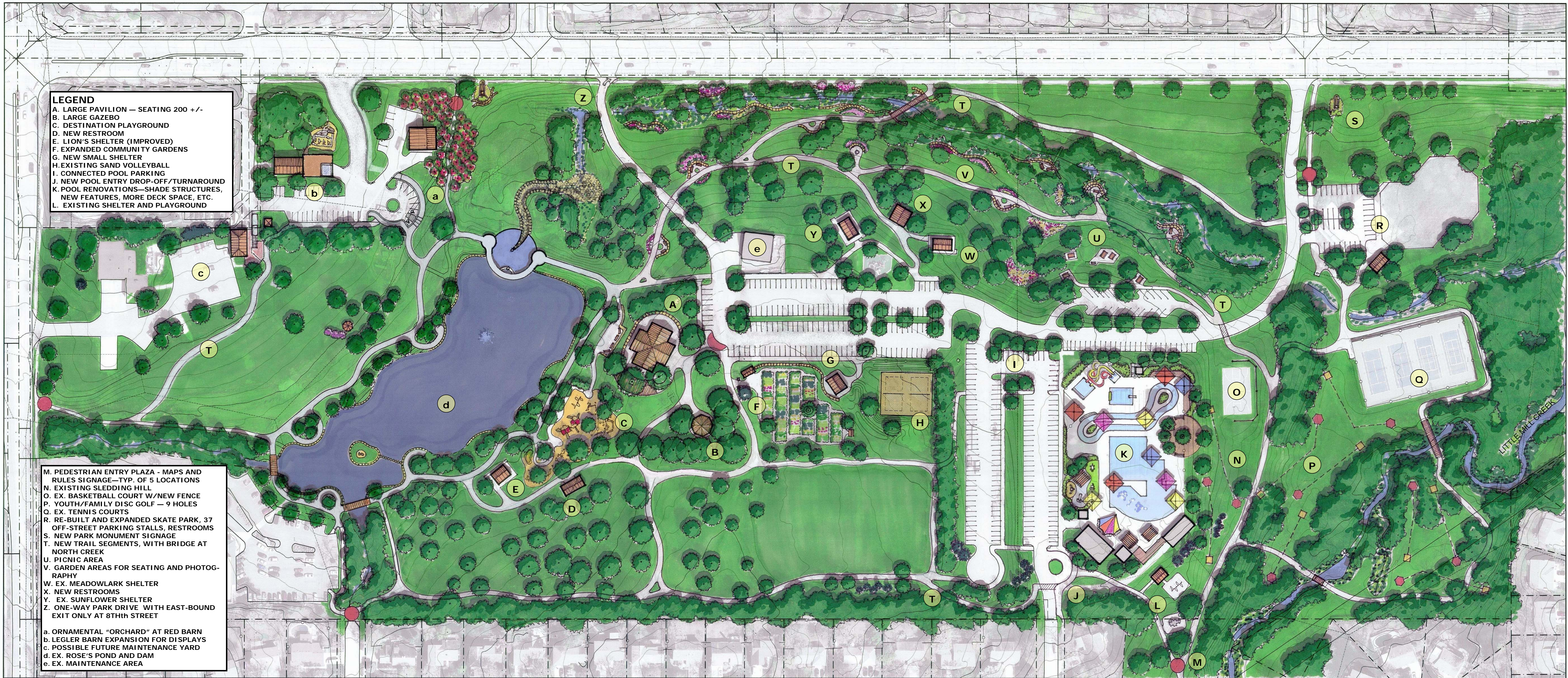


- LEGEND**
- A. LARGE PAVILION — SEATING 200 +/-
 - B. LARGE GAZEBO
 - C. DESTINATION PLAYGROUND
 - D. NEW RESTROOM
 - E. LION'S SHELTER (IMPROVED)
 - F. EXPANDED COMMUNITY GARDENS
 - G. NEW SMALL SHELTER
 - H. EXISTING SAND VOLLEYBALL
 - I. CONNECTED POOL PARKING
 - J. NEW POOL ENTRY DROP-OFF/TURNAROUND
 - K. POOL RENOVATIONS—SHADE STRUCTURES, NEW FEATURES, MORE DECK SPACE, ETC.
 - L. EXISTING SHELTER AND PLAYGROUND

- M. PEDESTRIAN ENTRY PLAZA - MAPS AND RULES SIGNAGE—TYP. OF 5 LOCATIONS
- N. EXISTING SLEDDING HILL
- O. EX. BASKETBALL COURT W/NEW FENCE
- P. YOUTH/FAMILY DISC GOLF — 9 HOLES
- Q. EX. TENNIS COURTS
- R. RE-BUILT AND EXPANDED SKATE PARK, 37 OFF-STREET PARKING STALLS, RESTROOMS
- S. NEW PARK MONUMENT SIGNAGE
- T. NEW TRAIL SEGMENTS, WITH BRIDGE AT NORTH CREEK
- U. PICNIC AREA
- V. GARDEN AREAS FOR SEATING AND PHOTOGRAPHY
- W. EX. MEADOWLARK SHELTER
- X. NEW RESTROOMS
- Y. EX. SUNFLOWER SHELTER
- Z. ONE-WAY PARK DRIVE WITH EAST-BOUND EXIT ONLY AT 8TH STREET

- a. ORNAMENTAL "ORCHARD" AT RED BARN
- b. LEGLER BARN EXPANSION FOR DISPLAYS
- c. POSSIBLE FUTURE MAINTENANCE YARD
- d. EX. ROSE'S POND AND DAM
- e. EX. MAINTENANCE AREA



SAR-KO-PAR TRAILS PARK—MASTER PLAN

AUGUST 15, 2013

scale 1" = 60' feet