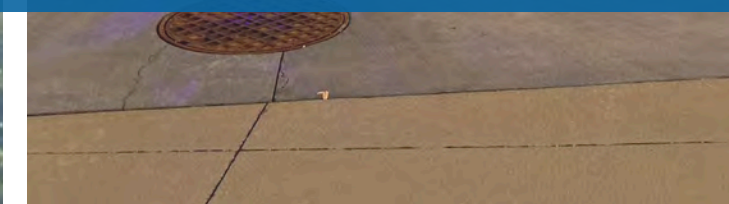
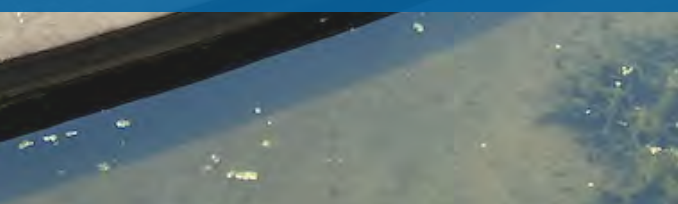


Lenexa Parks & Recreation Master Plan

CONNECTING PEOPLE, PLACES AND EXPERIENCES

APRIL 2024



Executive Summary



COMMUNITY OVERVIEW

Public parks, trails, and open spaces of Lenexa are where this community plays, recreates and celebrates. Lenexa parks have long held a special place in the hearts of residents. Because of great planning driven by community input, Lenexa has become a regional leader in parks and recreation delivery. It is also renowned for its festivals and community gatherings that foster a strong sense of community. Lenexa has a population dominated by young families and active older adults, both of which are avid users of park and recreation resources.

MASTER PLAN PROCESS

The 2023 Parks and Recreation Master Plan sought to understand the recreational needs and priorities through an extensive community engagement process. To accomplish this, the consultant team used the following tools:

1. Anecdotal Techniques

- a. Social Pinpoint (online feedback tool)
- b. Focus groups
- c. Community open houses and workshops

2. Qualitative Techniques

- a. Individual park, trail, and facility evaluations
- b. Demographics analysis
- c. Recreation program and events analysis
- d. Operations and maintenance analysis

3. Quantitative Techniques

- a. Needs assessment survey
- b. Community benchmarking
- c. Level of service analysis



USE OF THE PARKS AND RECREATION MASTER PLAN

The Master Plan is a roadmap that will help shape the future for parks and recreation. It establishes goals and objectives, and shapes policies and standards to help guide the future development of the City's parks, trails, recreation, and facilities. Different from a strategic plan, it focuses on high-level, broader goals and allows multiple ways to achieve them. This plan is used in conjunction with other documents including Vision 2040, the City's Comprehensive Plan and Governing Body's Guiding Principles.

TOP PRIORITY NEEDS

The Needs Assessment process identified the top priority needs through various analytical techniques. Below are the top 10:

1. Walking and Biking Trails

Expand the trail system in newly developed areas of Lenexa and improve connections between parks and neighborhoods. Enhance signage and wayfinding for the trail system.

2. Parks and Preservation

Citizens place a high value on the parks system and desire to preserve and maintain existing areas while filling in service gaps in the park system.

3. Dog Park (Off-Leash)

Offer more opportunities for off-leash dog areas for the community.

4. Outdoor Recreation and Nature Programming

Increase programming and opportunities for outdoor recreation and nature play.

5. Splash Pads/Spraygrounds

Provide splash pads/spraygrounds as an alternative and barrier-free option to the outdoor pools.

6. Pickleball Courts

Additional pickleball courts are needed to meet the demand from residents.

7. Farmers Market

Continue to grow and invest in the Farmers Market.

8. Adult Fitness, Wellness, and Enrichment

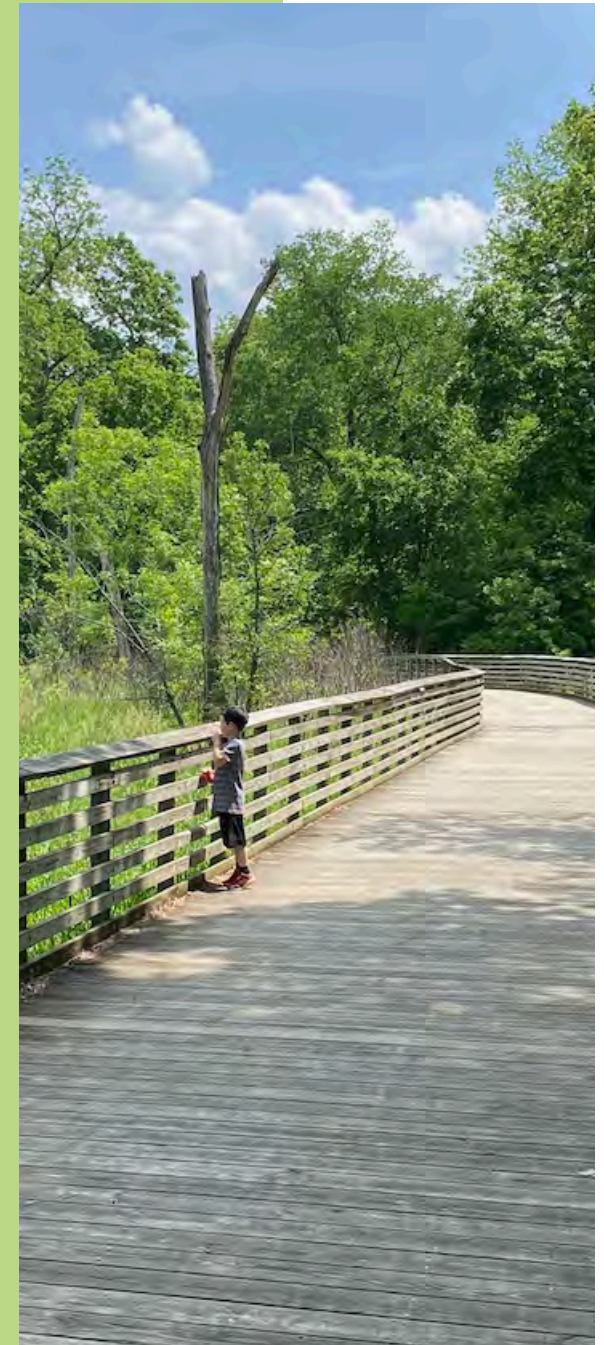
Due to evolving community demographics, additional program offerings for active older adults are needed.

9. Arts, History, and Culture Programming

Provide more programs and events focused on arts, history, and culture.

10. Maintain Top-Quality Service Levels

Good customer service, well-maintained infrastructure, and professional staff are highly desired by the community.



GUIDING VISION

The City's recreational needs and priorities can be best met through its parks, trails, facilities, programs, events and management practices. The Guiding Vision is organized into the following framework areas and key initiatives:

1. TRAILS AND CONNECTIVITY

- Extend trail corridors across Lenexa
- Improve trail signage: wayfinding and mapping
- Identify and fill in gaps along the trail system
- Expand nature trails where appropriate
- Upgrade trails in need to current Lenexa standard
- Maintain partnerships and coordinate with adjacent agencies

2. PARKS FOR ALL

- Maintain the parks and trail network
- Master plan and develop Centennial Park
- Master plan the undeveloped 60-acre park on Prairie Star Parkway west of Canyon Creek Boulevard
- Pursue opportunities to develop additional parks using the 10-minute walk goal
- Continue to invest in inclusive features at all playgrounds

3. PARK SYSTEM ENHANCEMENTS

- Develop dog park(s) in accessible location(s)
- Develop additional pickleball courts
- Construct an all-wheel pump track and single track course
- Construct a playground within City Center
- Develop a fitness park for accessible outdoor exercise
- Develop a splash pad/sprayground

4. PROGRAMS FOR ALL

- Maximize programming at the newly renovated Lenexa Old Town Activity Center
- Increase 50+ and Active Adults programs
- Expand outdoor adventure opportunities and nature programming
- Expand youth introductory sports to meet demand

5. ARTS AND CULTURE

- Identify options to add programming to Legler Barn
- Expand and embrace Lenexa's history through interpretive signage and outreach
- Seek opportunities to expand arts and culture programming strategically using partnerships when possible
- Incorporate public art into appropriate capital projects

6. ORGANIZATIONAL EXCELLENCE

- Construct a centrally located Parks Service Center for maintenance operations
- Update Parks and Recreation Master Plan every five years
- Seek agency accreditation through Commission for Accreditation of Parks and Recreation Agencies (CAPRA)
- Prioritize sustainability strategies and practices
- Maintain current market position in staffing
- Continue to leverage volunteers to enhance and help with programs and events
- Maintain cross training and internship programs
- Continue to expand partnerships and fundraising focusing on leveraging the Lenexa Foundation

IMPLEMENTATION

Implementation of the Guiding Vision will require time, resources, and coordination. Many factors could influence the timing and ability to implement the initiatives. Any master plan must be capable of evolving with the economy, available budget, and trends in the industry. This list is a snapshot in time. The bulleted list of key initiatives in the Guiding Vision to the left is color coded to reflect the priority tier in which these initiatives are most likely to be implemented. Those priority tiers are further described below.

TIER 1

- Highest priority
- Estimated to be implemented within 1-5 years

TIER 2

- Mid-term priorities
- Estimated to be implemented within 5-10 years

TIER 3

- Ongoing efforts and initiatives
- Initiatives that become applicable due to timing and opportunities